

Parkinson, 10 Mimosa Street

SOLD BY BENJAMIN LEONG & JONAS LEONG

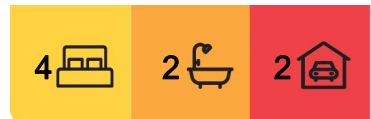
Stylish, contemporary, and immaculate, this fully renovated lowset residence in Parkinson offers both elegance and solace. Nestled in a serene neighbourhood, this home is designed to impress with its trendy new kitchen, sleek updated bathrooms, elegant new flooring, fresh paintwork, and a solid new fence with an automatic gate.

Key Features:

- Spacious open-plan design with lounge, dining area, and family room, all with ducted air conditioning and powered by solar panels
- Quality sophisticated kitchen with sumptuous marble-look waterfall stone countertops, large island bench, and dishwasher
- Beautifully landscaped gardens with all new lawns and trees plus a massive pergola area for alfresco entertaining and an adorable cubby house great for playful kids
- Within the renowned Stretton State College catchment and tucked away within a quiet



Disclaimer: All information contained therein is gathered from relevant third parties sources. We cannot guarantee or give any warranty about the information provided. Interested parties must rely solely on their own enquiries.



For Sale
Please Call

View
ljhooker.com.au/B22SF4R

Contact
Benjamin Leong
0407 712 392
benjaminleong@ljhpp.com.au

Jonas Leong
040 716 6298
jonasleong@ljhpp.com.au

LJ Hooker Property Partners
07 3344 0288

street with most amenities a short drive away

Nestled away on a superbly quiet street but proudly perched atop a generous 617 sqm corner block with exceptional street appeal, this fully renovated family entertainer is a glorious find. The property is fully fenced by sturdy fencing and boasts a secure automatic gate over the lengthy driveway leading to the double garage, offering supreme privacy, security, and ample parking.

The rendered facade is modern and pristine, with new lawns and manicured trees gracing its surrounds. A pedestrian gate leads down a cute stone path to the attractive portico, which leads within to the spacious, freshly painted interior, complete with soothing ducted air conditioning and an energy-efficient solar system.

Upon entering, you'll be greeted by all-new stylish flooring throughout, with the tiled hallway leading through to the spacious open-plan living areas. This includes a lounge, dining area, and family room, perfect for seamless relaxation or entertaining. The entire area is lit by dazzling downlights, while large windows offer an abundance of natural light, creating a warm and welcoming atmosphere throughout the day and night.

At the centre of it all sits the new sophisticated kitchen, adorned with glistening marble-look waterfall stone countertops and a litany of glossy and timber-look cabinetry for a sumptuous feel. A huge island bench topped by sleek pendant lighting doubles as a lengthy dining bar for casual hosting, while quality electric appliances, including a dishwasher, make this a splendid hub for refined feast creation.

Step outside and discover a massive entertainment pergola, ready for grand weekend gatherings or late-night revelries. It overlooks a beautifully landscaped yard and an adorable cubby house, perfect for kids to let their imaginations run wild.

After a day of fun and hosting, you'll find four newly carpeted bedrooms inside, each with sliding robes while the master features a big walk-in robe. They all have access to the elegant, shared bathroom fitted with a bathtub, frameless shower, floating stone-topped vanity, and a separate water closet. The master also boasts access to its own similarly indulgent ensuite.

This gorgeous neighbourhood is ideal for families, offering a quintessential family living experience. You can easily stroll to buses, childcare, and stunning parklands, with a short drive to prestigious Stretton State College, Parkinson Aquatic Centre, shops, and motorways for ultimate convenience.

- 850 m to Greenways Esplanade Park
- 1.6 km to Avenues Early Learning Centre Parkinson
- 1.7 km to bus stop
- 3 km to Parkinson Aquatic Centre
- 5 km to Stretton State College
- 4.7 km to Calamvale Marketplace

Don't miss the opportunity to make this flawless, pristine, and spacious home your own. Contact Benjamin or Jonas Leong today to find out more about this stylish and sophisticated entertainer's dream in Parkinson.



LJ Hooker Property Partners
07 3344 0288

Disclaimer: All information contained therein is gathered from relevant third parties sources. We cannot guarantee or give any warranty about the information provided. Interested parties must rely solely on their own enquiries.

All information contained herein is gathered from sources we consider to be reliable. However, we cannot guarantee or give any warranty about the information provided and interested parties must solely rely on their own enquiries.

Inspired by Family Pty Ltd with Sunnybank Districts P/L T/A LJ Hooker Property Partners
ABN 15 622 283 596 / 21 107 068 020

More About this Property

Property ID	B22SF4R
Property Type	House
Land Area	617 m ²
Including	Ensuite Air Conditioning Ducted Cooling Ducted Heating Toilets (2) Dishwasher Outdoor Entertaining Built-in-Robes Fully Fenced Remote Garage Solar Panels

Benjamin Leong 0407 712 392

Agent/Independent Contractor | benjaminleong@ljhpp.com.au

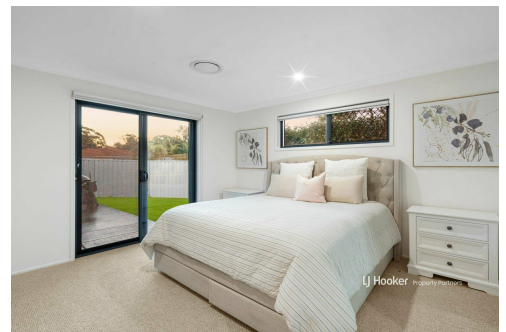
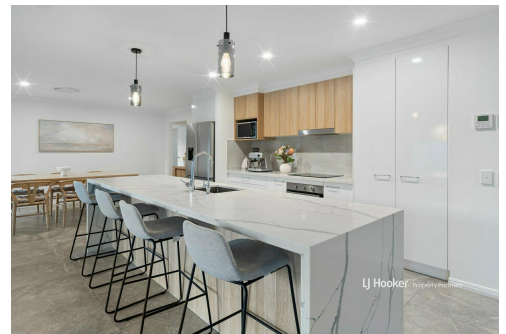
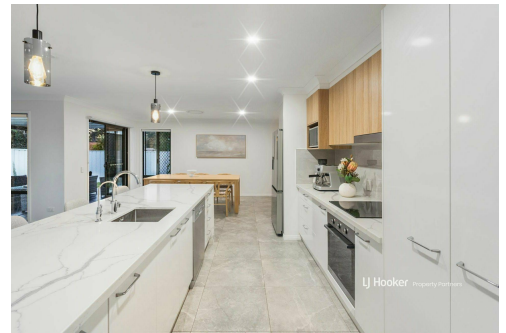
Jonas Leong 040 716 6298

Agent with Benjamin Leong | jonasleong@ljhpp.com.au

LJ Hooker Property Partners 07 3344 0288

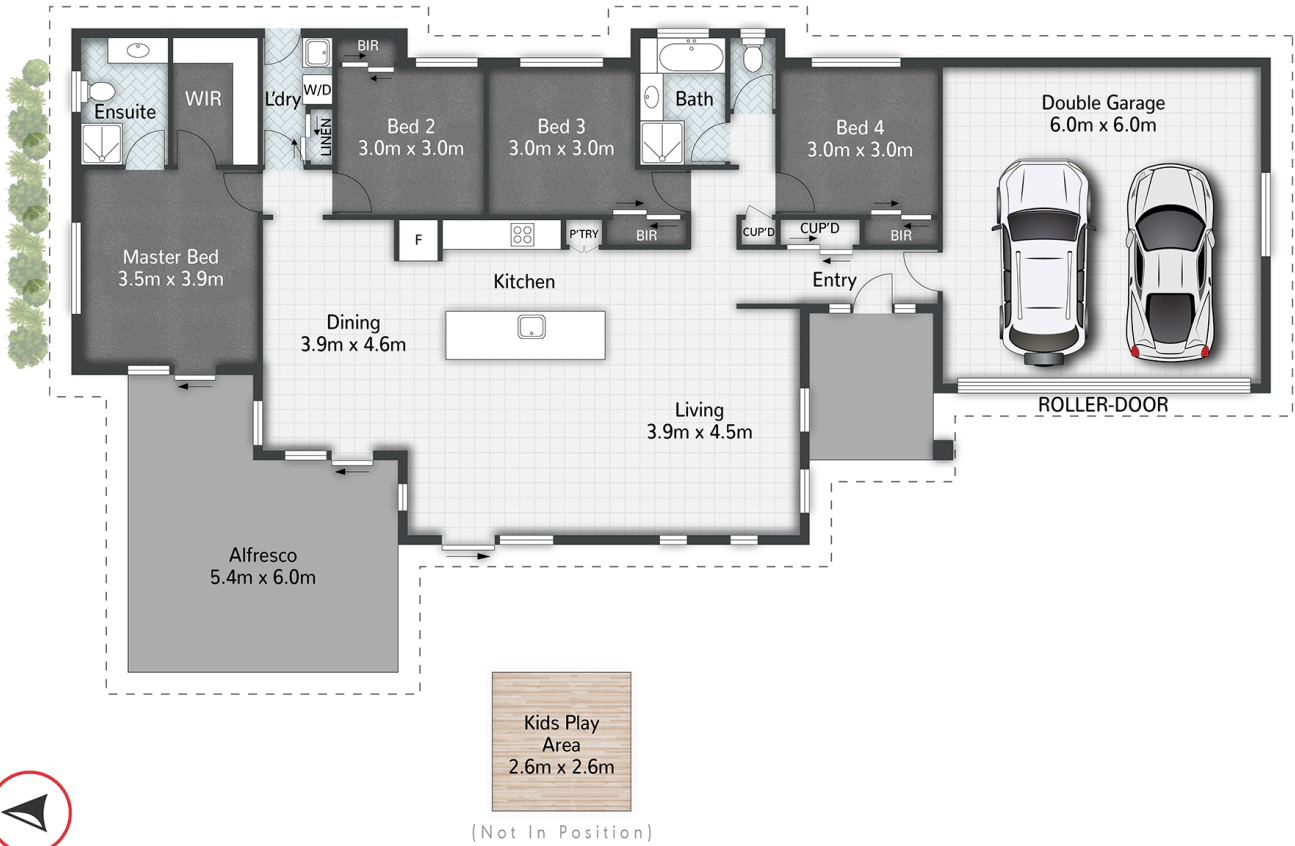
25 Pinelands Road, SUNNYBANK HILLS QLD 4109

propertypartners.ljhooker.com.au | sunnybankhills@ljhpp.com.au



LJ Hooker Property Partners
07 3344 0288

Disclaimer: All information contained therein is gathered from relevant third parties sources. We cannot guarantee or give any warranty about the information provided. Interested parties must rely solely on their own enquiries.



10 Mimosa Street PARKINSON

4 | 2 | 2 | 215m²

LJ Hooker Property Partners

All dimensions are approximate; they are subject to errors and inaccuracies and no liability will be accepted. Plans are shown for marketing purposes only.

LJ Hooker

LJ Hooker Property Partners
07 3344 0288

Disclaimer: All information contained therein is gathered from relevant third parties sources. We cannot guarantee or give any warranty about the information provided. Interested parties must rely solely on their own enquiries.