



5 Watertower Street, Park Ridge

SOLD BY BRENDAN DINGLE & RUBY CROWTHER

Welcome home to a place where modern design meets everyday practicality, all within the tranquil surrounds of Park Ridge's boutique Tillerman Estate. This brand-new, thoughtfully designed residence is more than just a house - it's a lifestyle upgrade. Positioned in one of Park Ridge's most exciting new communities, this home is perfectly suited for growing families or those seeking flexible living arrangements.

What Sets This Home Apart?

- Brand new home in a prime position in Tillerman Estate, surrounded by peaceful parklands and walking trails.
- Designed for large families or multi-generational households, with five bedrooms and flexible living arrangements to suit your needs
- High-tech touches: smart lock front door and in-built Bluetooth speakers for a modern lifestyle.
- A standout kitchen featuring a 900mm 5-burner gas cooktop, soft-close cabinetry, and a second wet kitchen for serious chefs.
- Impeccable finishes throughout, with floor-to-ceiling tiled bathrooms, timber flooring, and soaring 2.59m ceilings.

Step through the front door and into a home designed to inspire. The

5 🏠 3 🚿 2 🚗

FOR SALE

Please Call

AGENTS

Brendan Dingle
0401 500 412
brendandingle@ljhpp.com.au

Ruby Crowther
0422 189 718
rubycrowther@ljhpp.com.au

AGENCY

LJ Hooker Property Partners
07 3344 0288

All information contained therein is gathered from relevant third parties sources.
We cannot guarantee or give any warranty about the information provided.
Interested parties must rely solely on their own enquiries.



open-plan layout draws you into a bright and welcoming living space, where timber flooring flows effortlessly from room to room. At the heart of the home lies the beautifully appointed kitchen, where cooking becomes a joy thanks to premium appliances, ample storage, and a handy second wet kitchen that's perfect for hosting or separate living arrangements.

The carefully considered layout is ideal for larger families, offering five generous bedrooms and three modern bathrooms. Each of the bathrooms exudes luxury, featuring stylish floor-to-ceiling tiles and premium fittings, including a freestanding tub in the main bathroom. Generous bedrooms ensure comfort for all, with the master suite offering a walk-in wardrobe and a private ensuite for added privacy.

The covered alfresco area invites you to relax outdoors, overlooking a secure, low-maintenance yard that's perfect for kids and pets to roam freely.

Tillerman Estate is more than a location - it's a place to connect, grow, and create memories. Enjoy being just minutes from schools such as Park Ridge State High and St Philomena School, while shopping and dining options await at Park Ridge Town Centre and Grand Plaza. For outdoor lovers, local parks and walking trails, including the lush Berrinba Wetlands, provide endless opportunities to relax and explore. With easy access to major roads like the Mount Lindesay Highway and public transport links to Brisbane's CBD, everything you need is right at your doorstep.

This is a home where your story begins - it's the lifestyle upgrade you've been dreaming of. Don't miss your chance to secure this exceptional property - contact Brendan Dingle or Ruby Crowther today to arrange your inspection!

All information contained herein is gathered from sources we consider to be reliable. However, we cannot guarantee or give any warranty about the information provided and interested parties must solely rely on their own enquiries.

BDD Pty Ltd with Sunnybank Districts P/L T/A LJ Hooker Property Partners
ABN 47 676 306 264 / 21 107 068 020

MORE DETAILS

Property ID B2QMF4R
Property Type House
Land Area 506 m2
Including Ensuite
Air Conditioning
Outdoor Entertaining
Floorboards
Built-in-Robes
Fully Fenced
Remote Garage

Brendan Dingle 0401 500 412

Agent/Independent Contractor | brendandingle@ljhpp.com.au

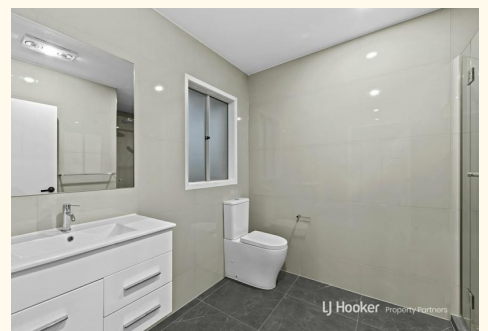
Ruby Crowther 0422 189 718

Sales Associate to Brendan Dingle | rubycrowther@ljhpp.com.au

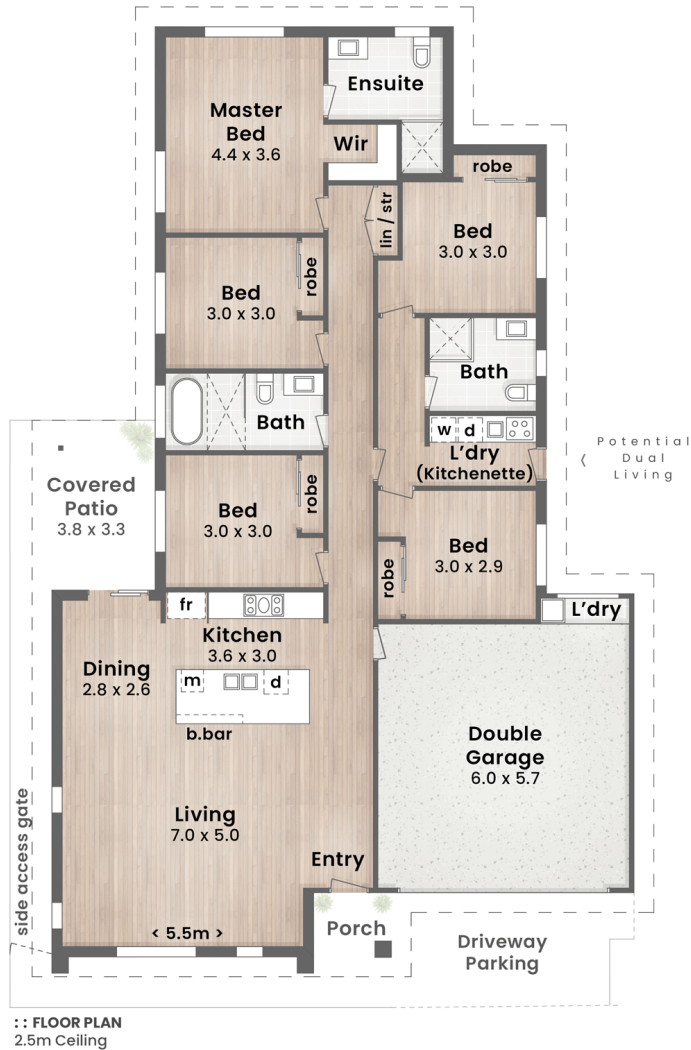
LJ Hooker Property Partners 07 3344 0288

25 Pinelands Road, SUNNYBANK HILLS QLD 4109

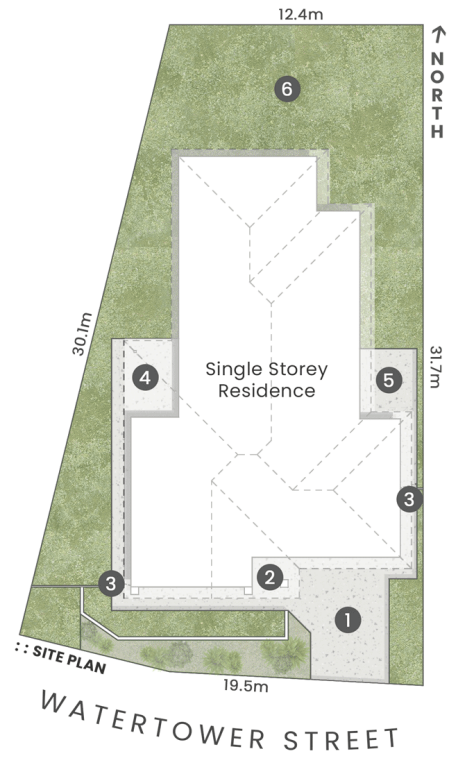
propertypartners.ljhooker.com.au | sunnybankhills@ljhpp.com.au



All information contained therein is gathered from relevant third parties sources.
We cannot guarantee or give any warranty about the information provided.
Interested parties must rely solely on their own enquiries.



- LEGEND**
- 1. Driveway Parking | 2. Entry Porch
 - 3. Side Access Gate | 4. Covered Patio
 - 5. Drying Court | 6. Fenced Lawn



LJ Hooker
Property Partners

5 Watertower Street
PARK RIDGE

Internal 206m² | Porch & Patio 15m² | **Total 221m²**

- 506m²
- 5 Bed
- 3 Bath
- 2 Car + Off-Street

DISCLAIMER: This is not a legal document therefore all measurements and information provided is subject to survey. No permission is given to use or alter this Floor Plan without the consent of Pure Design Concepts. The overall presentation style, layout, imagery, fonts, background, colours and terminology has been originally created by PDC and is subject to strict copyright. No ownership is taken of building design. Find out more at puredesignconcepts.com.au

pdc.

All information contained therein is gathered from relevant third parties sources.
We cannot guarantee or give any warranty about the information provided.
Interested parties must rely solely on their own enquiries.

LJ Hooker