

Park Ridge, 33 Grevillea Way

SOLD BY BRENDAN DINGLE & KATELYN BLACK

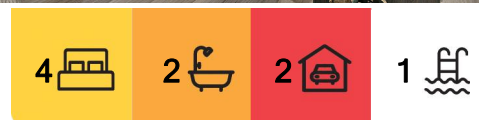
Offering up a dream family lifestyle is this stunning Hamptons-style four-bedroom home, situated in the exclusive new Carvers Reach Estate. Experience low maintenance luxury with large bedrooms and expansive open-plan living areas, seamlessly integrating with a gourmet designer kitchen. Venture outside to the sprawling outdoor entertainment area, boasting a patio, terrace, and indulgent heated pool, where you can host extravagant gatherings or enjoy intimate family moments. This is all complemented by ducted air conditioning and an energy-efficient 11.2 kW solar system, so you can enjoy guilt-free luxe living.

Top Features:

- Stunning Hamptons-style four-bedroom home in the exclusive new Carvers Reach Estate.
- Large bedrooms with secluded master bedroom and modern ensuite, plus a cosy study.



Disclaimer: All information contained therein is gathered from relevant third parties sources. We cannot guarantee or give any warranty about the information provided. Interested parties must rely solely on their own enquiries.



For Sale
Please Call

View
ljhooker.com.au/B1VEF4R

Contact
Brendan Dingle
0401 500 412
brendandingle@ljhpp.com.au

LJ Hooker Property Partners
07 3344 0288

- Expansive open-plan living areas with a fireplace, overlooking a gourmet designer kitchen.
- Sprawling outdoor entertainment area with a patio, terrace, and indulgent heated pool.
- Ducted air conditioning throughout, and enhanced by an energy-efficient 11.2 kW solar system.

Nestled within the new Carvers Reach Estate, surrounded by contemporary homes and lush parklands, this property offers an idyllic setting for family living. A mere stroll from expansive parklands, a dog park, and childcare facilities, it promises peace and convenience for young families. A short drive connects you to local schools, shopping centres, cafes, and essential services, ensuring every daily need is just moments away.

- 300 m to Carvers Dog Park
- 550 m to Carvers Park
- 1 km to Aussie Adventures Child Care & Kindergarten
- 2.3 km to Park Ridge Town Centre
- 2.4 km to Park Ridge State School
- 2.9 km to Park Ridge State High School
- 2.9 km to Park Ridge Park 'n' Ride Bus Station
- 4 km to Parklands Christian College

Positioned on a serene street, this Hamptons-style home exudes contemporary elegance with its rendered brick and timber-clad facade. Neatly manicured lawns and trendy gardens frame the property, emphasising its stylish appearance. The home utilises its 350 sqm low-maintenance block efficiently, featuring a long driveway leading to a double garage and a pathway that guides you to the elevated home and its inviting portico.

Step inside to find a home where every detail speaks of elegance and comfort. The beautiful timber flooring and glistening downlights create a warm, inviting atmosphere, while ducted air conditioning ensures year-round comfort. The spacious open-plan lounge and dining area forms the centre of the home, offering a sublime entertainment or relaxation hub.

The living area extends into the gourmet designer kitchen, which is a masterpiece of form and function. A lengthy dining bar, sleek pendant lights, and lustrous stone countertops elevate the space, while a wealth of modern cabinetry ensures plenty of storage. Equipped with quality electric appliances, including a dishwasher, and a large walk-in pantry, this kitchen is perfectly appointed to cater to the home chef's every need.

Outside, the large patio with a ceiling fan leads to a sprawling terrace and an indulgent heated pool, setting the scene for year-round enjoyment and entertainment. This spectacular outdoor space is ideal for hosting lavish gatherings and offers a low maintenance fenced backyard, providing privacy and ease of care.

Back inside, three carpeted bedrooms are grouped together, each equipped with ceiling fans and sliding mirrored robes. They share access to a modern bathroom with a shower, bathtub, and separate water closet. The secluded carpeted master suite, adjacent to a cosy study, features a ceiling fan, walk-in robe, and a stylish modern ensuite, offering a private retreat for the heads of the household.



LJ Hooker Property Partners
07 3344 0288

Disclaimer: All information contained therein is gathered from relevant third parties sources. We cannot guarantee or give any warranty about the information provided. Interested parties must rely solely on their own enquiries.

This exquisite property in Carvers Reach combines modern sophistication with family-friendly design to offer an unmatched living experience. To truly appreciate what this elegant home has to offer, contact Brendan Dingle and Katelyn Black today and arrange your private viewing.

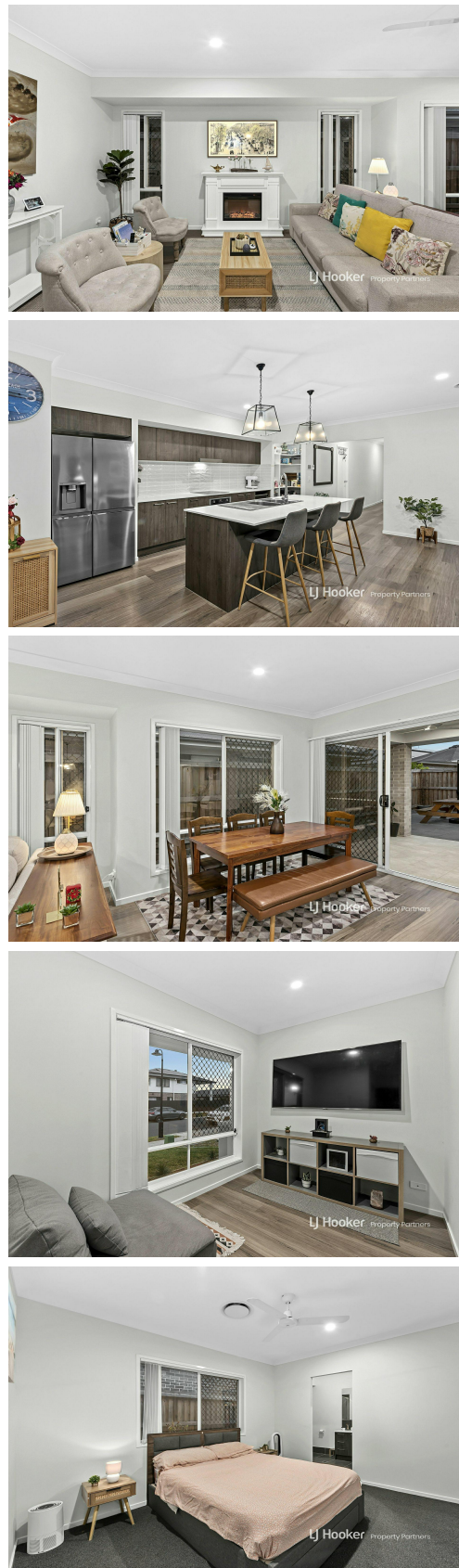
All information contained herein is gathered from sources we consider to be reliable. However, we cannot guarantee or give any warranty about the information provided and interested parties must solely rely on their own enquiries.

More About this Property

Property ID	B1VEF4R
Property Type	House
Land Area	350 m²
Including	Ducted Cooling Ducted Heating Pool Dishwasher Outdoor Entertaining Built-in-Robes Fully Fenced Remote Garage Solar Panels

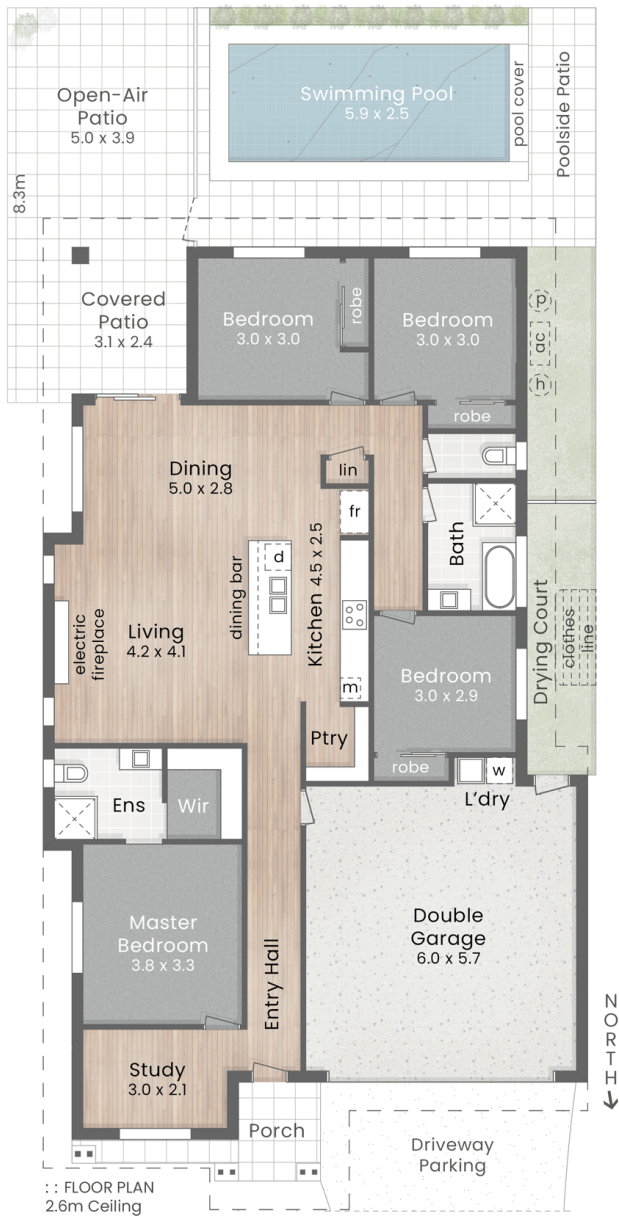
Brendan Dingle 0401 500 412
 Agent | brendandingle@ljhpp.com.au

LJ Hooker Property Partners 07 3344 0288
 25 Pinelands Road, SUNNYBANK HILLS QLD 4109
propertypartners.ljhooker.com.au | sunnybankhills@ljhpp.com.au



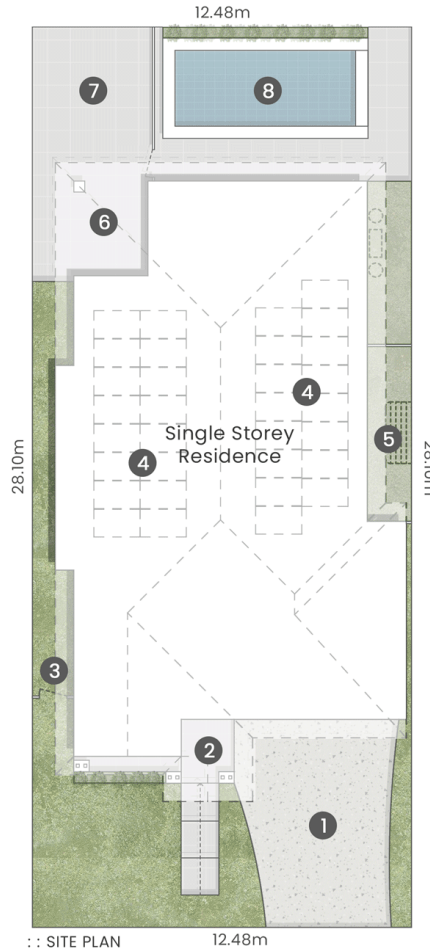
Disclaimer: All information contained therein is gathered from relevant third parties sources. We cannot guarantee or give any warranty about the information provided. Interested parties must rely solely on their own enquiries.

LJ Hooker Property Partners
07 3344 0288



LEGEND

- 1. Driveway Parking | 2. Entry Porch
- 3. Side Gate Access | 4. PV Solar Panels
- 5. Drying Court | 6. Covered Patio
- 7. Open-Air Patio | 8. Swimming Pool



**33 Grevillea Way
PARK RIDGE**

- 350m²
- 4 Bed + Study
- 2 Bath
- 2 Car + Off-Street

Internal 176m²

Covered Patio
& Porch 17m²

Total 193m²

pdc.

DISCLAIMER: This is not a legal document therefore all measurements and information provided is subject to survey. No permission is given to use or alter this Floor Plan without the consent of Pure Design Concepts. The overall presentation style, layout, imagery, fonts, background, colours and terminology has been originally created by PDC and is subject to strict copyright. No ownership is taken of building design. Find out more at: www.puredesignconcepts.com.au