



100 Mount Huntley Street, Park Ridge

## SOLD BY BRENDAN DINGLE & RUBY CROWTHER

Experience a lifestyle where cutting-edge technology meets the tranquility of a bushland backdrop in the growing heart of Park Ridge. This well positioned residence is a standout choice for tech-savvy families or professionals seeking a move-in-ready home with a focus on ease and efficiency.

Built in 2019, this stylish lowset offers a generous four-bedroom layout, smart home integration and a versatile floorplan that perfectly suits growing families and those who work from home.

### Highlights:

- Modern lowset on manageable 375m<sup>2</sup> block backing directly onto bushland
- Versatile living zones including a dedicated sunroom or study extension
- MasterChef kitchen with 900mm appliances, a five-burner gas cooktop, and a butler's pantry
- 4 spacious bedrooms; master with walk-in robes, private ensuite, and a/c
- Integrated smart lighting powered by solar and a secure electronic lock from the garage

4  2  2 

FOR SALE  
Offers Over \$899,000

### AGENTS

Brendan Dingle  
0401 500 412  
[brendandingle@ljhpp.com.au](mailto:brendandingle@ljhpp.com.au)

Ruby Crowther  
0422 189 718  
[rbycrowther@ljhpp.com.au](mailto:rbycrowther@ljhpp.com.au)

### AGENCY

LJ Hooker Property Partners  
07 3344 0288

All information contained therein is gathered from relevant third parties sources. We cannot guarantee or give any warranty about the information provided. Interested parties must rely solely on their own enquiries.

 **LJ Hooker**

- Ideally positioned close to local amenities, shops, and schools

Well-presenting with modern street appeal, this 375m<sup>2</sup> block is fully fenced, providing a safe space for children and pets to roam. Pull up to the double garage offering secure parking and an electronic lock on the internal access door for added peace of mind.

With stylish vinyl flooring underfoot, the expansive living and dining area seamlessly transitions into a bright sunroom that serves as an ideal home office or relaxation nook.

Overlooking this space is a MasterChef's kitchen, perfect for culinary exploration and complete with 900mm appliances, butler's pantry and a 5-burner gas cooktop. Whether you're whipping up a casual Tuesday dinner or hosting a festive party, this kitchen delivers.

When it comes time to relax, four spacious bedrooms offer a space for each member to call their own. The large master suite features its own walk-in-robe, private ensuite, and air-conditioning for year-round climate control and your ultimate comfort. Both bathrooms offer a touch of luxury with floor-to-ceiling tiling and bidets, while the integrated laundry adds essential daily convenience.

Efficiently powered with a 6.6kW solar system, the home embraces effortless control with integrated smart lighting throughout in the main living spaces and master bedroom, allowing you to tailor the atmosphere at your digital command from any room.

#### Other features

- Ceiling fans throughout
- Electric metal shutters on front window
- Vertical blinds
- Security screens

Conveniently positioned, with the tranquil backdrop of the untouched bushland at your rear, enjoy the benefits that this address offers you. Your daily life is anchored by incredible local amenities that place everything you need within easy reach. Mornings can begin with a quick two-minute trip to East Beaumont Park or a stress-free three-minute school run to the brand-new Corymbia State School.

Daily errands are transformed into effortless tasks with the new Woolworths and specialty stores just five minutes away, while both the Park Ridge Town Centre and Park Ridge State High School are accessible within an eight-minute drive. When your needs extend further, you remain seamlessly connected to the wider region, with Grand Plaza Shopping Centre, Logan Hospital, and the vibrant energy of the Brisbane CBD all situated within a 15 to 40-minute radius.

Don't miss your chance to secure a future-proof family home in a premier location. Reach out to Brendan or Ruby today.

All information contained herein is gathered from sources we consider to be reliable. However, we cannot guarantee or give any warranty about the information provided and interested parties must solely rely on their own enquiries.

BDD Pty Ltd with Sunnybank Districts P/L T/A LJ Hooker Property Partners  
ABN 47 676 306 264 / 21 107 068 020

## MORE DETAILS

Property ID B4BXF4R  
Property Type House  
Land Area 375 m2  
Including Ensuite  
Air Conditioning  
Dishwasher  
Built-in-Robes  
Fully Fenced  
Solar Panels

### **Brendan Dingle 0401 500 412**

Agent/Independent Contractor | [brendandingle@ljhpp.com.au](mailto:brendandingle@ljhpp.com.au)

### **Ruby Crowther 0422 189 718**

Sales Associate to Brendan Dingle | [rbycrowther@ljhpp.com.au](mailto:rbycrowther@ljhpp.com.au)

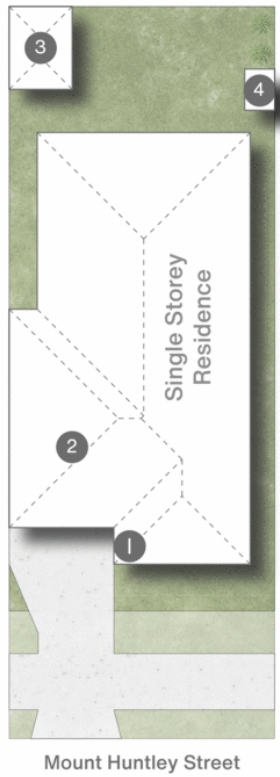
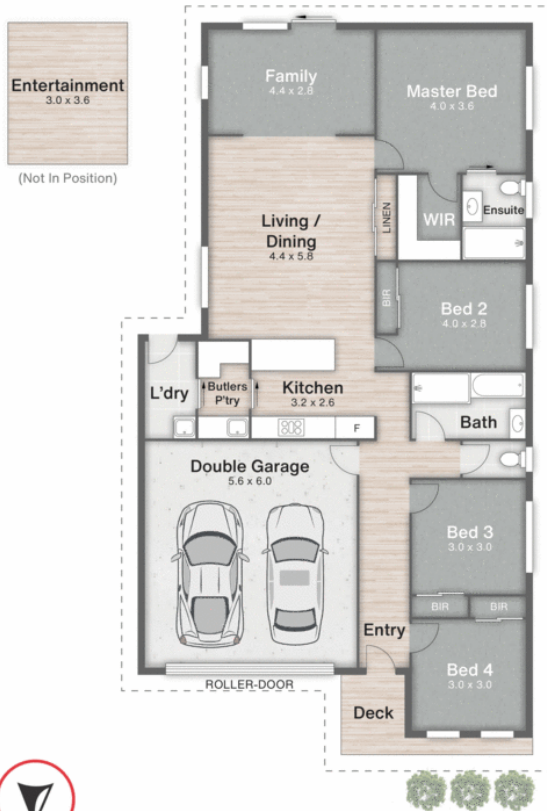
### **LJ Hooker Property Partners 07 3344 0288**

25 Pinelands Road, SUNNYBANK HILLS QLD 4109

[propertypartners.ljhooker.com.au](http://propertypartners.ljhooker.com.au) | [sunnybankhills@ljhpp.com.au](mailto:sunnybankhills@ljhpp.com.au)



All information contained therein is gathered from relevant third parties sources.  
We cannot guarantee or give any warranty about the information provided.  
Interested parties must rely solely on their own enquiries.



- 1 Deck
- 2 Garage
- 3 Entertainment
- 4 Shed



100 Mount Huntley Street **PARK RIDGE**

 4 | 
  2 | 
  2 | 
  180m<sup>2</sup> | 
  375m<sup>2</sup>

**LJ Hooker** Property Partners

All dimensions are approximate; they are subject to errors and inaccuracies and no liability will be accepted. Plans are shown for marketing purposes only.

All information contained therein is gathered from relevant third parties sources. We cannot guarantee or give any warranty about the information provided. Interested parties must rely solely on their own enquiries.

