



Pareora, 7 Davidson Street

Grab a Slice of Parry-dise!

This tidy and well-maintained home sits on a generous quarter-acre section in the small, coastal town of Pareora - just ten minutes south of Timaru. With three double bedrooms, a combined dining and kitchen area, spacious living area, one bathroom and two separate toilets, it's ideal for families or first-home buyers. Stay warm year-round with a DVS system, heat pump, pellet fire and enjoy sunny afternoons in the roomy conservatory.

Outside, enjoy a fully fenced yard, the perfect space for kids and pets to play. The double garage offers room for parking and storage, plus a versatile rumpus room here. Offering easy access to Timaru while still providing a peaceful, country feel this is a must see - contact us today to arrange a viewing!

Features:

- DVS system
- Pellet fire



Disclaimer: All information contained therein is gathered from relevant third parties sources.

We cannot guarantee or give any warranty about the information provided. Interested parties must rely solely on their own enquiries.

SOLD

3

1

2

For Sale

Enquiries Over \$409,000

View

ljhooker.co.nz/15FDGTA

Contact

Ben Groundwater

027 415 6405

ben.timaru@ljhooker.co.nz

Joelle Snook

027 844 5432

joelle.timaru@ljhooker.co.nz

LJ Hooker Timaru

(03) 688 3029

Enting Real Estate Limited

- Heat pump
- Three double bedrooms
- Two separate toilets
- Conservatory
- Double garage
- Fully fenced

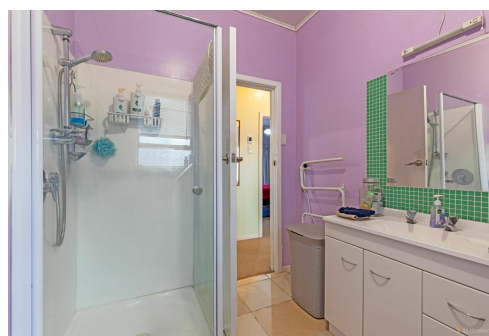
Disclaimer:

This information has been supplied by the owners and Corelogic. LJ Hooker Timaru, Geraldine and Waimate are merely passing over this information as supplied to us. We cannot guarantee its accuracy and reliability as we have not checked, audited or reviewed the information. All intending purchasers are advised to conduct their own due diligence investigation into this information. To the maximum extent permitted by law, we do not accept any responsibility to any part for the accuracy or use of the information herein. Enting Real Estate Limited Licensed (REAA 2008).



More About this Property

Property ID	15FDGTA
Property Type	House
House Size	123 m2
Land Area	1012 m2
Licensed Real Estate Agents (REAA2008)	



Ben Groundwater 027 415 6405

Property Consultant | ben.timaru@ljhooker.co.nz

Joelle Snook 027 844 5432

Property Consultant | joelle.timaru@ljhooker.co.nz

LJ Hooker Timaru (03) 688 3029

Enting Real Estate Limited

51 Church Street, TIMARU 7910

timaru.ljhooker.co.nz | timaru@ljhooker.co.nz



LJ Hooker Timaru
(03) 688 3029
 Enting Real Estate Limited

Disclaimer: All information contained therein is gathered from relevant third parties sources. We cannot guarantee or give any warranty about the information provided. Interested parties must rely solely on their own enquiries.