

9 Gino Street, Paralowie


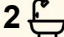
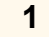
Stunning Modern Home

Proudly built by the current owners in 2019, this well-maintained four-bedroom, two-bathroom home has been thoughtfully designed to offer comfortable, low-maintenance living. Every detail has been carefully considered, creating a home where everything has already been done for you. Simply move in and start enjoying the lifestyle on offer. With a practical layout and easy-care features throughout, it has been the perfect place for this family to grow and create lasting memories.

Beautifully presented and filled with modern touches, the home showcases contemporary finishes and a well-planned floor plan designed for comfortable everyday living. Whether you are a first-home buyer looking to step into the market, a downsizer seeking something easy to maintain or a savvy investor wanting to secure a quality property, this home presents an outstanding opportunity. Having served the current owners well over the years, the time has now come to pass the keys on to a lucky new buyer who will no doubt enjoy everything this wonderful home has to offer.

Key Features:

- Spacious master bedroom complete with ensuite, walk-in robe, ceiling fan and battery-operated roller shutter
- Bedroom three equipped with a ceiling fan and roller shutters for added comfort and privacy

4  2  1 

FOR SALE
\$700,000 - \$750,000

AGENTS

Donna Staines
0456 844 103
donnas@ljhsales.com.au

Dean King
0499 497 898
deank@ljhsales.com.au

AGENCY

LJ Hooker Property Specialists
(08) 8289 6660

All information contained therein is gathered from relevant third parties sources.
We cannot guarantee or give any warranty about the information provided.
Interested parties must rely solely on their own enquiries.

 **LJ Hooker**

- Bedroom four featuring a built-in robe, ceiling fan and roller shutter
- Well-appointed main bathroom with the convenience of a separate toilet
- Impressive 2.7m high ceilings throughout, enhancing the sense of space
- Gas heating and evaporative cooling providing year-round comfort
- Modern kitchen showcasing stylish stone benchtops
- Quality appliances including a dishwasher and Pure tap for filtered water
- Powered garden shed with concrete pavers, perfect for storage or a small workshop
- Durable aggregate concrete surrounding the home and driveway
- Efficient gas hot water system
- Stylish downlights installed throughout the home, adding a modern touch
- Automatic roller door

Nestled in a thriving and growing suburb, this home offers outstanding convenience with local schools, parks, and shopping centres all close by. Whether it's everyday errands, weekend outings or enjoying nearby green spaces, everything you need is within easy reach.

With quick and convenient access to the Northern Expressway, commuting to the Adelaide CBD and surrounding suburbs is simple and efficient. Offering both lifestyle and location, this is an opportunity not to be missed.

Don't miss your chance to make this fantastic home yours!

All information provided has been obtained from sources we believe to be accurate, however, we cannot guarantee the information is accurate and we accept no liability for any errors or omissions (including but not limited to a property's land size, floor plans and size, building age and condition). Interested parties should make their own enquiries and obtain their own legal and financial advice. Should this property be scheduled for auction, the Vendor's Statement may be inspected at our LJ Hooker Property Specialists Real Estate office for 3 consecutive business days immediately preceding the auction and at the auction for 30 minutes before it starts.
RLA 208516

MORE DETAILS

Property ID	2D3ZGJU
Property Type	House
House Size	143 m2
Land Area	300 m2

Donna Staines 0456 844 103

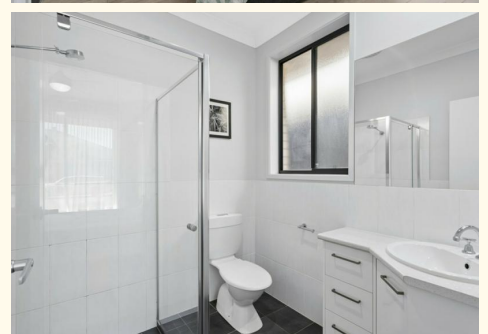
Sales Specialist | donnas@ljhsales.com.au

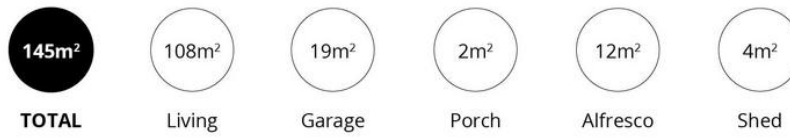
Dean King 0499 497 898

Sales Specialist | deank@ljhsales.com.au

LJ Hooker Property Specialists (08) 8289 6660

Shop 2, 1007 North East Road, RIDGEHAVEN SA 5097
propertyspecialists.ljhooker.com.au | info@ljhsupport.com.au





Scale in metres. This drawing is for illustration purposes only. All measurements are approximate and details intended to be relied upon should be independently verified.

Produced by **The Fotobase Group**