

Paralowie, 32 Delamere Drive

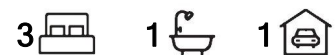
Ideal for First-Time Buyers, Downsizers, or Investors!

Auction Location: Onsite

This inviting 3-bedroom home on a spacious 590m² approx. allotment offers a fantastic opportunity for entry-level homeowners, downsizers, or investors. With James Rishworth Reserve across the street & Venturi Reserve close by, this property provides great walking trails and space for the family to enjoy.

Located in the heart of Paralowie, this home benefits from the proximity of Paralowie Primary/High School and Bethany Christian College, a range of shopping centres, and convenient access to the Northern Expressway, making those trips to the CBD an easy commute!

Features include:



For Sale

Auction (\$500,000)

View

ljhooker.com.au/1UZPG54

Contact

Maigen Norman

0418 557 597

maigenn@ljhsales.com.au



Disclaimer: All information contained therein is gathered from relevant third parties sources. We cannot guarantee or give any warranty about the information provided. Interested parties must rely solely on their own enquiries.

LJ Hooker Gawler | Barossa
(08) 8522 3311

- * Main bedroom and bedroom 2 with built-in robe.
- * Bedroom 3 is generous in size.
- * The kitchen is complete with a new oven and 5 burner gas cooktop.
- * Second living area.
- * Freshly painted, carpeted and flooring throughout.
- * Brand new gas hot water system.
- * Undercover entertaining area.
- * Single carport with rear access.
- * Drive through vehicle access at the front of the home, suitable for multiple cars.
- * Garden shed.

For further enquiries, please contact Maigen Norman on 0418 557 597.

CT / 5223/550
 Internal Living / 96m2
 Land Size / 590m2 (approx.)
 Year Built / 1998 (approx.)
 Local Government / Salisbury

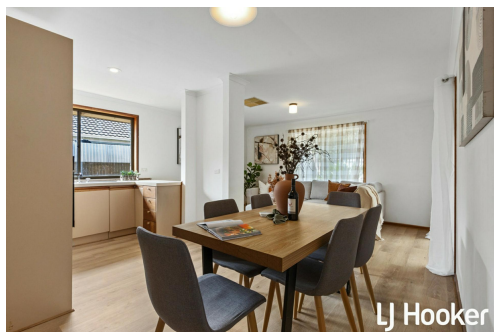
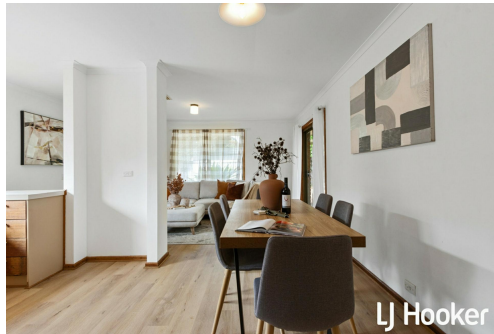
All information provided has been obtained from sources we believe to be accurate, however, we cannot guarantee the information is accurate and we accept no liability for any errors or omissions (including but not limited to a property's land size, floor plans and size, building age and condition). Interested parties should make their own enquiries and obtain their own legal and financial advice. Should this property be scheduled for auction, the Vendor's Statement may be inspected at either of our two LJ Hooker Property Specialists Real Estate offices for 3 consecutive business days immediately preceding the auction and at the auction for 30 minutes before it starts. RLA 305453

More About this Property

Property ID	1UZPG54
Property Type	House
House Size	96 m²
Land Area	590 m²
Including	Outdoor Entertaining Floorboards Built-in-Robes Secure Parking

Maigen Norman 0418 557 597
 Sales Specialist | maigenn@ljhsales.com.au

LJ Hooker Gawler | Barossa (08) 8522 3311
 26 Adelaide Road, GAWLER SA 5118
 gawlerbarossa.ljhooker.com.au | gawler@ljhsupport.com.au

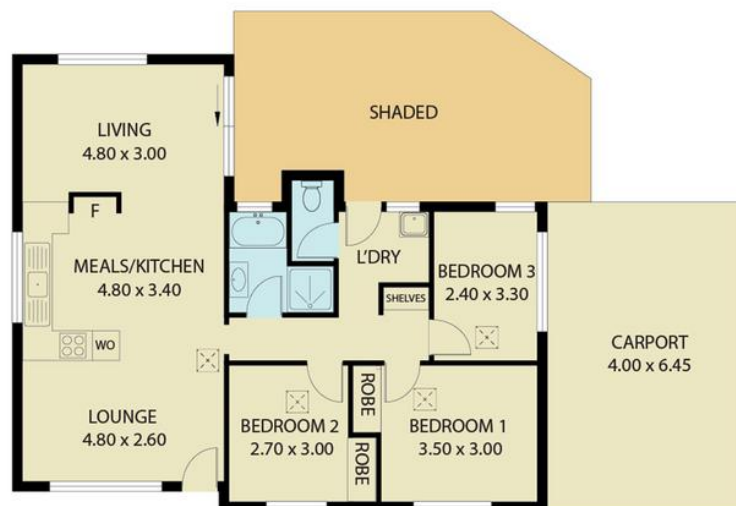


Disclaimer: All information contained therein is gathered from relevant third parties sources. We cannot guarantee or give any warranty about the information provided. Interested parties must rely solely on their own enquiries.

LJ Hooker Gawler | Barossa
(08) 8522 3311

32 Delamere Drive,
PARALOWIE

SHED
1.60 x 2.00



Living:	76.29SQM
Carport:	25.80SQM
Shaded:	31.20SQM
Shed:	3.20SQM
TOTAL:	136.49SQM

This Drawing is for illustration purposes only. All measurements are internal and approximate. Details intended to be relied upon should be independently verified.