

## Paralowie, 2 Sandown Avenue

### RARE CORNER ALLOTMENT

Welcome to 2 Sandown Crescent Paralowie that boasts a land size of 720 m2 Approx, and a lovely 3 bedroom family home that is ideal for the first home buyers, investors and developers.

Features include:

- \* 3 bedrooms
- \* Freshly painted for your enjoyment
- \* Updated kitchen with family meals
- \* Large lounge
- \* Polished timber floors through-out
- \* Heating & cooling
- \* Rear double garage
- \* Rare corner allotment with dual access



**Disclaimer:** All information contained therein is gathered from relevant third parties sources. We cannot guarantee or give any warranty about the information provided. Interested parties must rely solely on their own enquiries.



#### For Sale

Please Call

#### View

[ljhooker.com.au/29YXGJU](http://ljhooker.com.au/29YXGJU)

#### Contact

**Craig Ricciuto**

0417 806 329

[craigr@ljhsales.com.au](mailto:craigr@ljhsales.com.au)

**LJ Hooker Greenwith | Golden Grove | Mawson Lakes | Modbury**  
**(08) 8289 6660**

Perfectly positioned to public transport, local schools and shopping makes this home a must for your inspection.

All information provided has been obtained from sources we believe to be accurate, however, we cannot guarantee the information is accurate and we accept no liability for any errors or omissions (including but not limited to a property's land size, floor plans and size, building age and condition). Interested parties should make their own enquiries and obtain their own legal and financial advice. Should this property be scheduled for auction, the Vendor's Statement may be inspected at either of our two LJ Hooker Property Specialists Real Estate offices for 3 consecutive business days immediately preceding the auction and at the auction for 30 minutes before it starts.

RLA 208516

## More About this Property

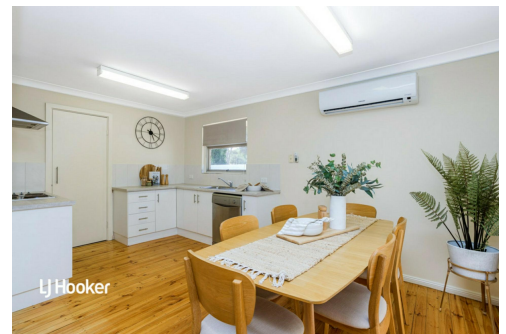
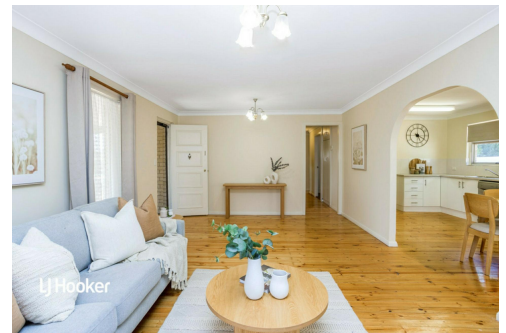
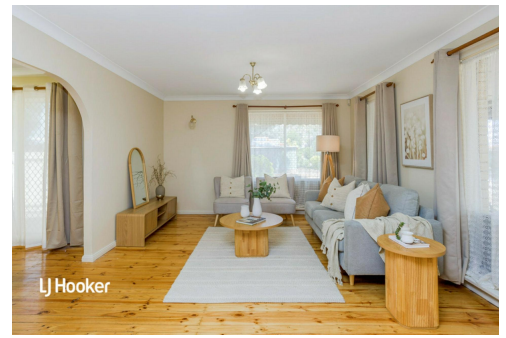
<b>Property ID</b>	29YXGJU
<b>Property Type</b>	House
<b>House Size</b>	121 m <sup>2</sup>
<b>Land Area</b>	720 m <sup>2</sup>
<b>Including</b>	Air Conditioning Floorboards Workshop Secure Parking

**Craig Ricciuto 0417 806 329**

Managing Partner | Sales Specialist | [craigr@ljhsales.com.au](mailto:craigr@ljhsales.com.au)

**LJ Hooker Greenwith | Golden Grove | Mawson Lakes | Modbury (08) 8289 6660**

North East, Shop 2, 1007 North East Road, RIDGEHAVEN SA 5097  
[greenwithgoldengrove.ljhooker.com.au](http://greenwithgoldengrove.ljhooker.com.au) | [info@ljhsupport.com.au](mailto:info@ljhsupport.com.au)



**Disclaimer:** All information contained therein is gathered from relevant third parties sources. We cannot guarantee or give any warranty about the information provided. Interested parties must rely solely on their own enquiries.

**LJ Hooker Greenwith | Golden Grove | Mawson Lakes | Modbury (08) 8289 6660**



Scale in metres. This drawing is for illustration purposes only. All measurements are approximate and details intended to be relied upon should be independently verified.

Produced by The Fotobase Group