

Paralowie, 2 Charlotte Drive

So much space for your family!

Located opposite Little Para Golf Course on a large corner allotment of 745sqm (approx.) of land with No Easements, it this spacious 3-bedroom family home offering both formal and informal meals areas along with two living spaces internally to enjoy. A home you can add your personal touches to and take full advantage of the land size for your family, alternatively savvy investors may look at possible subdivision in the future subject to planning and council consent.

Large corner block of 745sqm (approx.) of land with a frontage of 31.61sqm (approx.) No easements.

Features include:

- * 3 Spacious bedrooms, bedroom 2 with built-in robe
- * Main bedroom also with parent's retreat, ensuite and walk through robe
- * Open plan kitchen with walk in pantry, electric cooktop and breakfast bar



Disclaimer: All information contained therein is gathered from relevant third parties sources. We cannot guarantee or give any warranty about the information provided. Interested parties must rely solely on their own enquiries.



For Sale
\$739,000 - \$779,000

View
ljhooker.com.au/2BFPGJU

Contact
Shaun Roberts
0435 367 534
shaunr@ljhsales.com.au

**LJ Hooker Greenwith | Golden Grove
| Mawson Lakes | Modbury
(08) 8289 6660**

- * Family and meals with sliding access to outdoor area
- * Front formal lounge and dining room
- * Ducted evaporative air conditioning
- * 5kw Solar system to save \$\$\$ on your electricity bills
- * Undercover verandah overlooking the large backyard with 2 sheds for all your DIY needs
- * 2 carport with auto roller doors

Close to local schooling, shopping centres, parks and reserves this location is sure to appeal to many. Only a short drive from the Salisbury Highway, North-South Motorway and the Princes Highway making your commutes around Adelaide a breeze!

Enquire Today!

All information provided has been obtained from sources we believe to be accurate, however, we cannot guarantee the information is accurate and we accept no liability for any errors or omissions (including but not limited to a property's land size, floor plans and size, building age and condition). Interested parties should make their own enquiries and obtain their own legal and financial advice. Should this property be scheduled for auction, the Vendor's Statement may be inspected at either of our two LJ Hooker Property Specialists Real Estate offices for 3 consecutive business days immediately preceding the auction and at the auction for 30 minutes before it starts.

RLA 208516

More About this Property

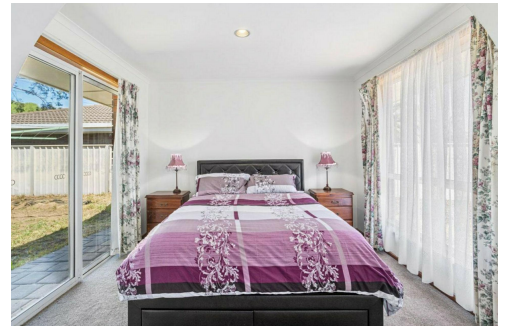
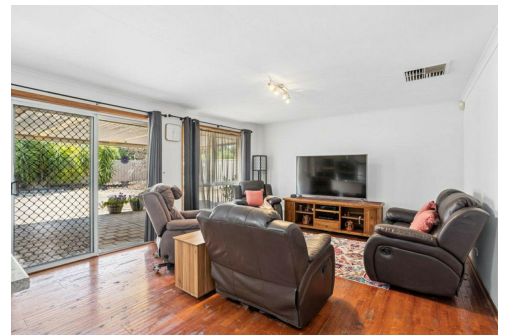
Property ID	2BFPGJU
Property Type	House
House Size	177 m2
Land Area	745 m2
Including	Air Conditioning Ducted Cooling Evaporative Cooling Secure Parking Fully Fenced Solar Panels

Shaun Roberts 0435 367 534

Managing Partner | Sales Specialist | shaunr@ljhsales.com.au

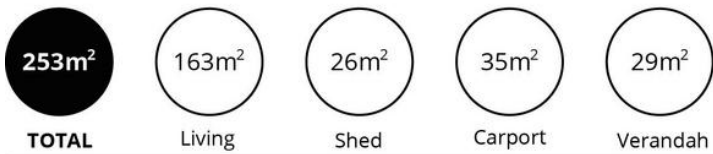
LJ Hooker Greenwith | Golden Grove | Mawson Lakes | Modbury (08) 8289 6660

North East, Shop 2, 1007 North East Road, RIDGEHAVEN SA 5097
greenwithgoldengrove.ljhooker.com.au | info@ljhsupport.com.au



Disclaimer: All information contained therein is gathered from relevant third parties sources. We cannot guarantee or give any warranty about the information provided. Interested parties must rely solely on their own enquiries.

**LJ Hooker Greenwith | Golden Grove
| Mawson Lakes | Modbury
(08) 8289 6660**



Scale in metres. This drawing is for illustration purposes only. All measurements are approximate and details intended to be relied upon should be independently verified.

Produced by The Fotobase Group