

## Parafield Gardens, 48 Lantana Drive

### Home Sweet Home!

Auction Location: Onsite

AUCTION: Onsite, Saturday the 1st of June at 1:00pm

Situated on a generous corner allotment of 630m2 (approx.) with a street frontage of 27.55m2 (approx.) stands this solid brick 1976-built family home. Secure now, move-in or rent out, the possibilities are endless.

Offering 4 bedrooms and a secure rear entertaining area for the family, this is a delightful home from the moment you step inside the front gate. The land has no easements which may appeal to developers considering development in the future (subject to planning approval), there is ample secure parking for someone with multiple vehicles, quite simply there is so much to love about this property.



**For Sale**  
UNDER CONTRACT

**View**  
[ljhooker.com.au/2A9UGJU](http://ljhooker.com.au/2A9UGJU)

**Contact**  
**Shaun Roberts**  
0435 367 534  
[shaunr@ljhsales.com.au](mailto:shaunr@ljhsales.com.au)



**Disclaimer:** All information contained therein is gathered from relevant third parties sources. We cannot guarantee or give any warranty about the information provided. Interested parties must rely solely on their own enquiries.

**LJ Hooker Greenwith | Golden Grove**  
**| Mawson Lakes | Modbury**  
**(08) 8289 6660**



Features include:

- \* No easements
- \* 4 Bedroom home all with built-in robes
- \* Lounge with reverse cycle wall unit and gas heater
- \* Meals area adjacent to the kitchen
- \* Kitchen with gas cooktop, oven and overhead cupboards
- \* Ducted evaporative cooling
- \* Paved undercover entertaining with access to side yards
- \* Side yard with lawn area and clothesline, shaded areas for plants and chicken shed
- \* Manual roller shutters to all front windows
- \* Double garage with auto panel lift door and drive-through access to another 2-car garage
- \* 2 Rainwater tanks for watering plants in the gardens
- \* Fully fenced front yard perfect for those with small children

Just moments from local schools, parks and playgrounds on offer in Parafield Gardens. Only a short drive away from Salisbury Highway, Kings Road and North/South Expressway making your commute around Adelaide a breeze. Ideal for homeowners and investors alike, inspection is a must!

Enquire today.

All information provided has been obtained from sources we believe to be accurate, however, we cannot guarantee the information is accurate and we accept no liability for any errors or omissions (including but not limited to a property's land size, floor plans and size, building age and condition). Interested parties should make their own enquiries and obtain their own legal and financial advice. Should this property be scheduled for auction, the Vendor's Statement may be inspected at either of our two LJ Hooker Property Specialists Real Estate offices for 3 consecutive business days immediately preceding the auction and at the auction for 30 minutes before it starts.

RLA 208516

## More About this Property

Property ID	2A9UGJU
Property Type	House
House Size	133 m <sup>2</sup>
Land Area	630 m <sup>2</sup>
Including	Air Conditioning Evaporative Cooling Outdoor Entertaining Fully Fenced

**Shaun Roberts 0435 367 534**

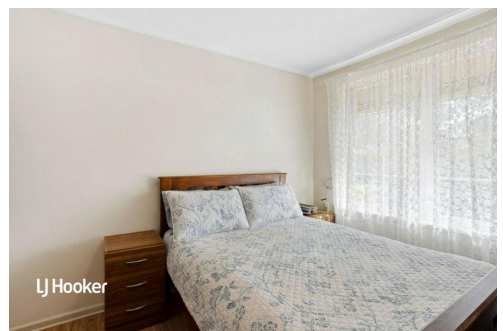
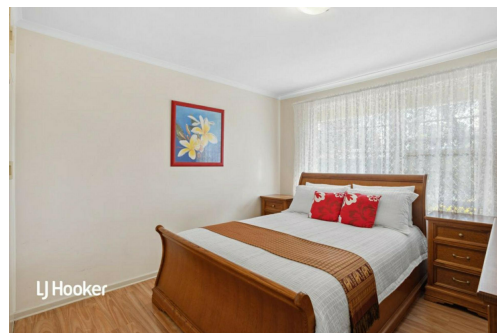
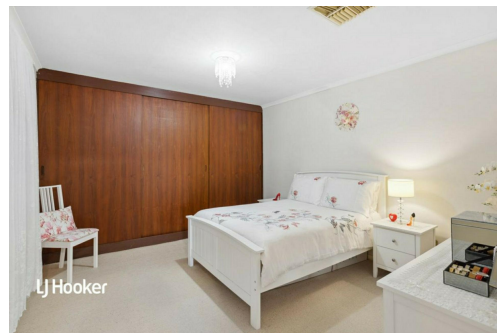
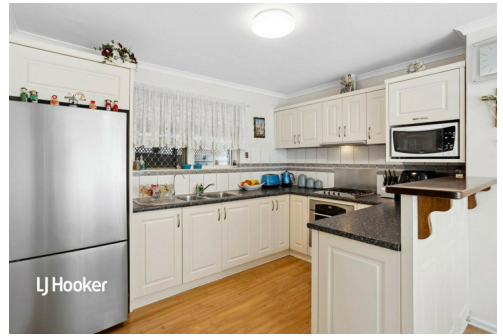
Managing Partner | Sales Specialist | [shaunr@ljhsales.com.au](mailto:shaunr@ljhsales.com.au)

**LJ Hooker Greenwith | Golden Grove | Mawson Lakes | Modbury (08) 8289 6660**

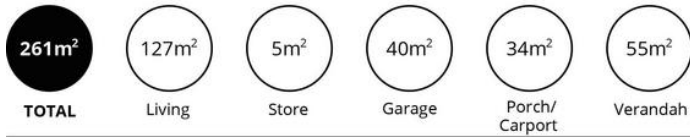
North East, Shop 2, 1007 North East Road, RIDGEHAVEN SA 5097  
[greenwithgoldengrove.ljhooker.com.au](http://greenwithgoldengrove.ljhooker.com.au) | [info@ljhsupport.com.au](mailto:info@ljhsupport.com.au)



**Disclaimer:** All information contained therein is gathered from relevant third parties sources. We cannot guarantee or give any warranty about the information provided. Interested parties must rely solely on their own enquiries.



**LJ Hooker Greenwith | Golden Grove  
| Mawson Lakes | Modbury  
(08) 8289 6660**



Scale in metres. This drawing is for illustration purposes only. All measurements are approximate and details intended to be relied upon should be independently verified.

Produced by The Fotobase Group