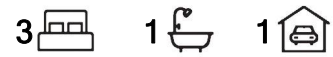




Paradise, 3 Glen Court

Sold by Greg Nicholls of LJ Hooker Adelaide Metro



Greg Nicholls of LJ Hooker Adelaide Metro welcomes you to this charming home, nestled away in cosy cul-de-sac and just minutes to the Adelaide CBD, Paradise Interchange, Thorndon Park and Newton Central Shopping Centre.

For Sale
\$790,000 - \$810,000

View
ljhooker.com.au/2CKNFDZ

Contact
Greg Nicholls
0478 131 807
greg.nicholls@ljhadelaidemetro.com.au

Those looking to add value will instantly recognise the potential to transform this home into a modern residence, extend or create consulting rooms/small business activities with flexible Urban Corridor Zoning. This is a home with the best of both worlds! Plus the addition of outstanding driveway access to the rear of the home, for potential clients or those simply needing to store away treasured cars/caravans.

Featuring:

- Excellent 768m2 (approx.) allotment
- Three bedrooms - Master with build-in robes



LJ Hooker St Peters
(08) 8362 8008

Disclaimer: All information contained therein is gathered from relevant third parties sources. We cannot guarantee or give any warranty about the information provided. Interested parties must rely solely on their own enquiries.

- Huge open plan dining and kitchen area
- Great sized lounge, bathed in natural light
- Family bathroom with a separate toilet
- Handy shed for vehicle storage or tools
- Great sized driveway for further vehicles or a caravan
- Huge garden to add further storage or for children to roam to their hearts content!

This is a great opportunity to roll your sleeves up and update this home for future reward!

Purchasing this property as an investment? Talk with Kirsty Clark from our PM team and see why our Property Management department is #1 amongst all the LJ Hooker offices Worldwide.

** All information provided has been obtained from sources we believe to be accurate, however, we cannot guarantee the information is accurate and we accept no liability for any errors or omissions (including but not limited to a property's land size, floor plans and size, building age and condition). Interested parties should make their own enquiries and obtain their own legal advice.

Should this property be scheduled for auction, the Vendor's Statement (Form 1) will be available at the LJ Hooker St Peters office for 3 consecutive business days immediately preceding the auction and at the auction for 30 minutes before it starts.

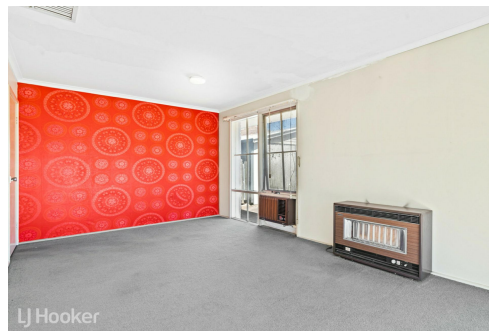
RLA 61345 RLA 282965 RLA 231015

More About this Property

Property ID	2CKNFDZ
Property Type	House
Land Area	768 m2

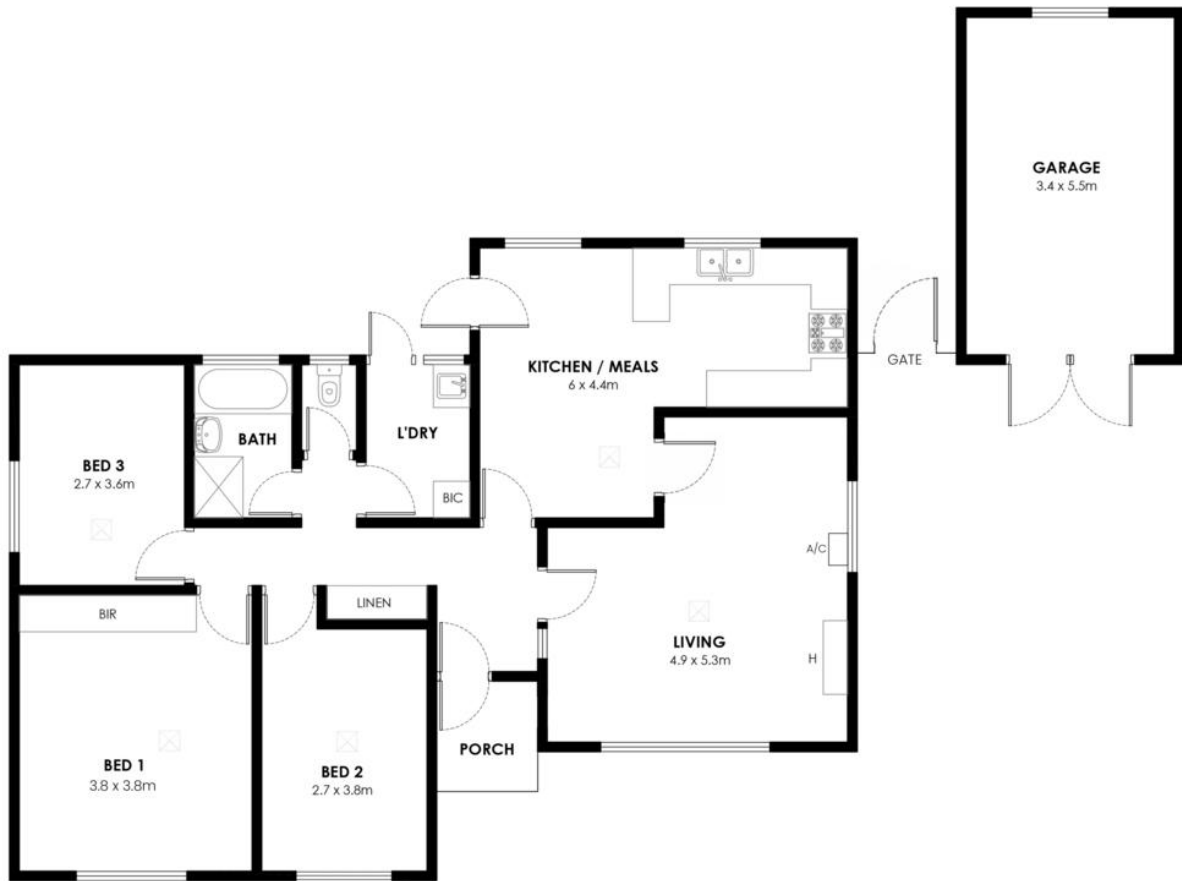
Greg Nicholls 0478 131 807
Sales Consultant | greg.nicholls@ljhadelaidemetro.com.au

LJ Hooker St Peters (08) 8362 8008
2a Portrush Road, PAYNEHAM SA 5070
stpeters.ljhooker.com.au | stpeters@ljhadelaidemetro.com.au



Disclaimer: All information contained therein is gathered from relevant third parties sources. We cannot guarantee or give any warranty about the information provided. Interested parties must rely solely on their own enquiries.

**LJ Hooker St Peters
(08) 8362 8008**

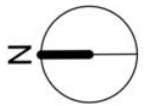


Living - 114m²

Garage - 21m²

Total - 135m²

Measurements are approximate



3 Glen Court, Paradise, SA 5075

Disclaimer: The information & figures obtained within this document has been compiled from information provided by vendor & sources that we believe are reliable. No warranty is given to their accuracy & all figures are subject to change without notice.