



1 Franklin Court, Paradise

Sold by Julian Rullo & George De Vizio of LJ Hooker Adelaide Metro

Auction Location: On-site

Tucked away in a quiet cul-de-sac, this 1980 built home offers space, comfort and endless potential in one of the area's most sought after locations. Situated on a generous 587sqm (approx.) allotment with an impressive 18.32m frontage, the home has been lovingly maintained in its original condition, providing buyers with the option to move straight in, update gradually or reimagine the space to suit their own vision. Whether you're a first home buyer, growing family or investor, this is a rare opportunity to secure a home with both character and promise.

Step inside and you are welcomed by an oversized main lounge room filled with natural light, offering the perfect spot to unwind or entertain guests. The kitchen sits at the heart of the home, complete with cooktop, oven and ample storage, while adjoining dining and living areas ensure the whole family has space to spread out.

Accommodation is generous with four well sized bedrooms, including

4 2 2

FOR SALE
Contact Agent

AGENTS

Julian Rullo
0407846417
julian.rullo@ljhadelaidemetro.com.au

George De Vizio
0412 392 158
gdevizio@ljhadelaidemetro.com.au

AGENCY

LJ Hooker Glynde
(08) 8336 3899

a main bedroom featuring its own ensuite for convenience. The remaining bedrooms are serviced by the main bathroom with separate toilet.

Outdoors, a large rear yard provides plenty of room for children and pets to enjoy, while the covered entertaining area sets the scene for weekend barbecues and family celebrations. A small tool shed adds practicality, perfect for garden storage.

What you'll love;

- Built in 1980
- 587sqm (approx.) with 18m frontage
- Soaked in natural light
- Double brick
- Roller shutters
- Fruit Trees
- Ducted reverse cycle air-conditioning
- Double garage under main roof

Adding to its appeal, the home is located within walking distance to Newton Central, where you'll find a great selection of specialty shops and vibrant cafes. Families will appreciate the proximity to quality schools, local parks and public transport, ensuring everything you need is right at your doorstep.

With its combination of size, location and potential, this property offers the chance to secure a spacious family home in a tightly held pocket. A fantastic lifestyle opportunity awaits.

Purchasing this property as an investment? Talk with Kirsty Clark from our PM team and see why our Property Management department is #1 amongst all the LJ Hooker offices Worldwide.

- * All information provided has been obtained from sources we believe to be accurate, however, we cannot guarantee the information is accurate and we accept no liability for any errors or omissions (including but not limited to a property's land size, floor plans and size, building age and condition). Interested parties should make their own enquiries and obtain their own legal advice.

Should this property be scheduled for auction, the Vendor's Statement (Form 1) will be available at the LJ Hooker St Peters office for 3 consecutive business days immediately preceding the auction and at the auction for 30 minutes before it starts.

RLA 61345 RLA 282965 RLA 231015

MORE DETAILS

Property ID	WQXFDG
Property Type	House
Land Area	587 m2
Including	Ensuite

Julian Rullo 0407846417

Sales Consultant | julian.rullo@ljhadelaidemetro.com.au

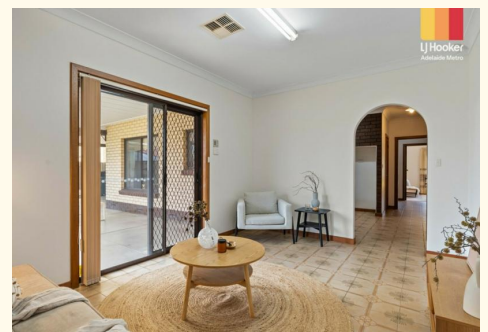
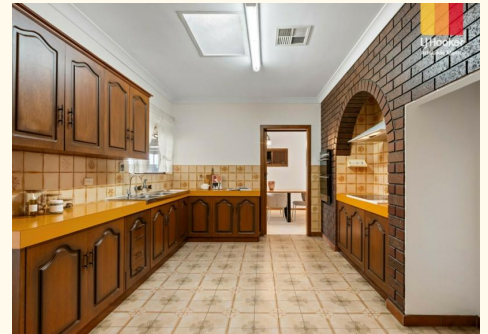
George De Vizio 0412 392 158

Sales Manager | gdevizio@ljhadelaidemetro.com.au

LJ Hooker Glynde (08) 8336 3899

2a Portrush Road, PAYNEHAM SA 5070

glynde.ljhooker.com.au | stpeters@ljhadelaidemetro.com.au





1 Franklin Court, Paradise, SA 5075

Disclaimer: The information & figures obtained within this document has been compiled from information provided by vendor & sources that we believe are reliable. No warranty is given to their accuracy & all figures are subject to change without notice.