



5 Conner Close, Palmerston

Smart Design, Easy Living

- Room Auction | LJ Hooker Canberra City Office | Wednesday the 1st of April at 6pm


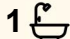
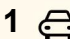
FIND.

Tucked away in a quiet cul-de-sac within the welcoming community of Palmerston, this beautifully refreshed three-bedroom home delivers comfort, functionality and modern style. Freshly painted and thoughtfully updated throughout, the home features charming colonial grid windows and an inviting street presence. With its practical layout, renovated interiors and low-maintenance outdoor spaces, this is an excellent opportunity for families, first-home buyers or investors seeking a move-in-ready home in a convenient location.

LOVE.

At the heart of the home is a spacious renovated kitchen designed for both everyday living and entertaining. Equipped with a five-burner Electrolux cooktop, Bosch oven and generous storage, it provides a practical and stylish hub for the household. Skylights throughout the home bring in an abundance of natural light, while tiled and timber-look flooring create a clean, contemporary feel.

All three bedrooms include built-in robes, and the beautifully renovated bathroom is complemented by a separate WC for added convenience. The home also features an updated laundry and split

3  1  1 

FOR SALE

Auction

AGENTS

Eoin Ryan-Hicks

0424 042 419

Eoin.ryan-hicks@ljhooker.com.au

Olivia Schultz

0415 366 287

olivia.schultz@ljhkipax.com.au

AGENCY

LJ Hooker Kippax

(02) 6255 3888

All information contained therein is gathered from relevant third parties sources.
We cannot guarantee or give any warranty about the information provided.
Interested parties must rely solely on their own enquiries.

 **LJ Hooker**

system inverted heating and cooling system to ensure year-round comfort.

LIVE.

Step outside to a paved outdoor entertaining area that flows seamlessly into a grassed yard, providing the perfect space for weekend barbecues, relaxing afternoons or children to play. Positioned in a great street within Palmerston, you'll enjoy the benefits of a peaceful setting while remaining close to local schools, shops, parks and transport connections, offering a lifestyle that balances comfort, convenience and community.

ABOUT THE AREA

Local Transport:

- Easy access to major arterial roads
- Local bus services connecting to Gungahlin Town Centre

Shopping & Dining:

- Gungahlin Marketplace
- " Casey Market Town
- " Local cafés and dining options throughout the Gungahlin region

Schools:

- Palmerston Primary School
- Burgmann Anglican School
- Gungahlin College

WHAT THE OWNER LOVES:

"We've loved the natural light that fills the home and how easy life feels here, from walking to the local IGA to popping out the back gate for a play with the dog. The smart door lock has also made everyday living effortless, with no need to carry keys."

OVERVIEW:

- Three bedrooms, all with built-in robes
- Beautifully renovated bathroom
- Separate WC
- Renovated kitchen with ample storage
- burner Electrolux cooktop
- Bosch oven
- Tiles and timber-look floor coverings throughout
- Freshly painted interiors
- Colonial grid windows throughout
- Skylights providing excellent natural light
- Updated laundry
- Ducted Heating and Cooling
- Paved outdoor entertaining area
- Single car garage with internal access
- 5kw inverter and 6.9kw solar system

RATES/SIZE

Land Size: 258m² approx.

Living Size: 104m² approx.

Rates: \$2,884p.a approx.

Land Tax: \$4,086p.a approx.

Body Corporate: \$644.79p.q approx.

EER: 5.5

All information contained herein is gathered from sources we consider to be reliable. However, we cannot guarantee or give any warranty about the information provided. Interested parties must solely rely on their own enquiries.

EER 

MORE DETAILS

Property ID	1J0HF9U
Property Type	Townhouse
House Size	104 m2
Land Area	258 m2
EER	5.5

Eoin Ryan-Hicks 0424 042 419

Franchise Owner | Sales Manager | Licensed Agent ACT & NSW |
Eoin.ryan-hicks@ljhooker.com.au

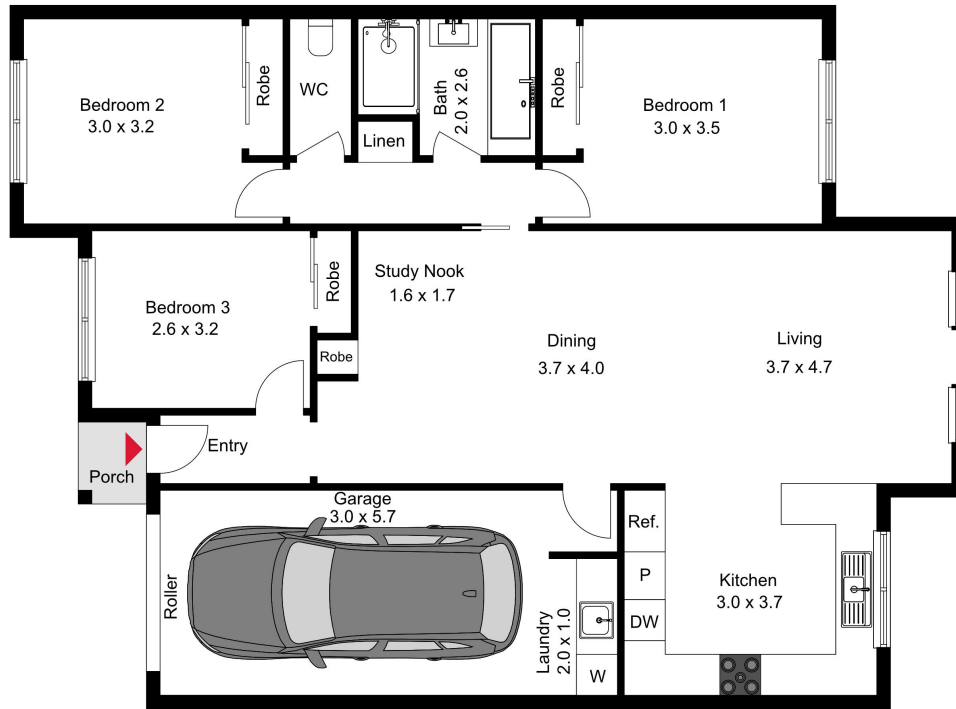
Olivia Schultz 0415 366 287

Licensed Agent | Team Ryan-Hicks | olivia.schultz@ljhkipax.com.au

LJ Hooker Kippax (02) 6255 3888

Cnr Luke Street & Hardwick Crescent, HOLT ACT 2615
kipax.ljhooker.com.au | kippax@ljhooker.com.au





The floor plan is not to scale, measurements are indicative and in metres. Exterior elements are not in position. Plans should not be relied on. Interested parties should make and rely on their own enquiries.

5 Conner Cl, Palmerston



All information contained therein is gathered from relevant third parties sources.
We cannot guarantee or give any warranty about the information provided.
Interested parties must rely solely on their own enquiries.

