



15 Sago Close, Palm Cove

4  2  2 

Palm Cove Living — Pool, Space & Relaxation

If you've been searching for a private tropical Palm Cove home, this could be exactly what you've been waiting for.

Located in a quiet cul-de-sac just minutes from the Palm Cove beachfront, this spacious four-bedroom home offers the relaxed tropical lifestyle buyers love about the Northern Beaches.

Set on 603m², the home features multiple living areas flowing to a covered outdoor entertaining space and sparkling in-ground pool.

With four bedrooms, two bathrooms, a well-positioned kitchen and double garage, the home offers both comfort and flexibility for families, investors or lifestyle buyers.

A fantastic opportunity to secure a home in one of Cairns' most desirable coastal locations.

FOR SALE

Offers over \$959,000

VIEW

By Appointment

AGENTS

Erin Landells
0400 302 555
erin.landells@ljhooker.com.au

Nick Pelucchi
0410 102 277
nick.pelucchi@ljhooker.com.au

AGENCY

LJ Hooker Cairns Beaches
(07) 4059 0594

All information contained therein is gathered from relevant third parties sources. We cannot guarantee or give any warranty about the information provided. Interested parties must rely solely on their own enquiries.

 **LJ Hooker**

MORE DETAILS

Property ID	U2SHSS
Property Type	House
Land Area	603 m2
Including	Air Conditioning
	Pool
	Dishwasher
	Built-in-Robes
	Secure Parking
	Fully Fenced
	Remote Garage

Erin Landells 0400 302 555

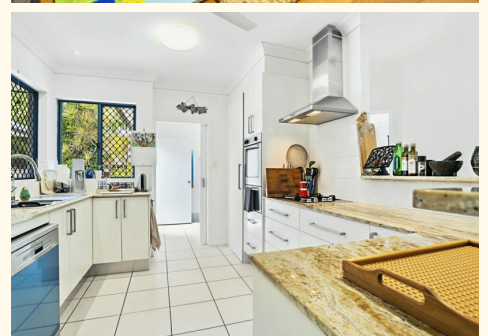
Residential Sales | erin.landells@ljhooker.com.au

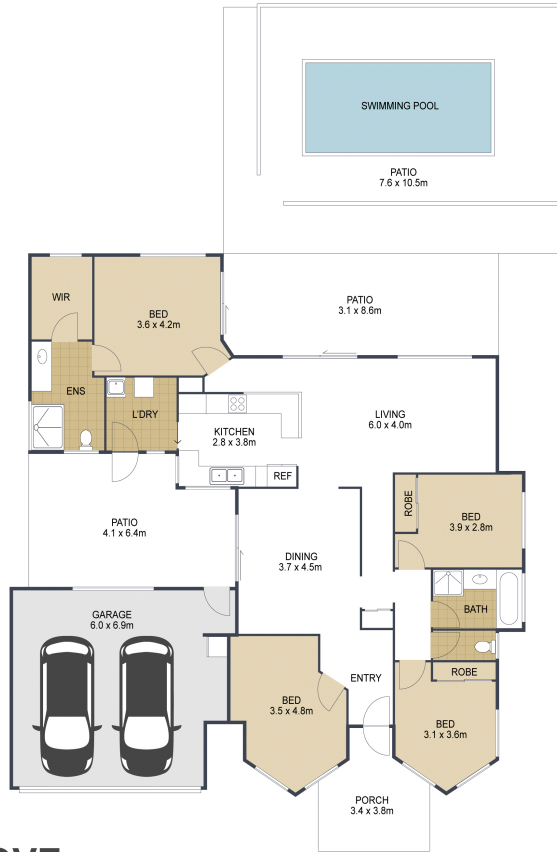
Nick Pelucchi 0410 102 277

Operations Manager | Residential Sales |
nick.pelucchi@ljhooker.com.au

LJ Hooker Cairns Beaches (07) 4059 0594

Shop 10/471 Varley Street, YORKEYS KNOB QLD 4878
cairnsbeaches.ljhooker.com.au |
sales.cairnsbeaches@ljhooker.com.au





-  4
-  2
-  2

TOTAL: 325 m²

15 Sago Cl, PALM COVE

ARTIST'S IMPRESSION ONLY: While every attempt has been made to ensure the accuracy of this floor plan's areas and measurements of doors, windows, rooms and all other items are approximate and no responsibility is taken for any error, omission, or mis-statement. This plan is for illustrative purposes only and should only be used as such by any prospective purchaser. Floor plan by: www.open2view.com.au

