



## Palm Cove, 13 Lillian Road

### Lush Tropical Oasis

Architecturally designed, 13 Lillian Rd, Palm Cove is where your dreams begin for a Private Tropical Lifestyle and the true essence of Far North Queensland. Tropical Garden Views from every window in this impressive home.

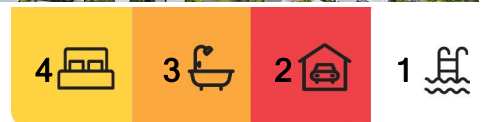
Enter via the drive-through, grand-style portico with individually laid cobblestones underfoot. Surrounded by gardens and water features you will feel instantly relaxed the moment you walk through the gorgeous timber front doors. This beautiful home will bring all your senses alive! Beautiful high ceilings, many angles demonstrating quality craftsmanship and extensive use of quality materials like Australian hardwood timber, New Guinea Rosewood timber, and sandstone and terracotta slate tiles used throughout the home.

Large bi-fold timber doors, windows and timber louvres have been carefully positioned to capture all the breeze, very little need for air-conditioning.

For your Living Pleasure:



**Disclaimer:** All information contained therein is gathered from relevant third parties sources. We cannot guarantee or give any warranty about the information provided. Interested parties must rely solely on their own enquiries.



**For Sale**  
Please Call

**View**  
[ljhooker.com.au/TCTHSS](http://ljhooker.com.au/TCTHSS)

**Contact**  
**Craig Gillard**  
0410 553 557  
[craig.gillard@ljhooker.com.au](mailto:craig.gillard@ljhooker.com.au)  
**Nick Pelucchi**  
0410 102 277  
[nick.pelucchi@ljhooker.com.au](mailto:nick.pelucchi@ljhooker.com.au)

**LJ Hooker Cairns Beaches**  
(07) 4059 0594



- Gourmet kitchen with butlers pantry, stone bench tops, glass splashbacks, modern stainless steel appliances, servery window out to patio
- 13 x 3 meter HEATED in-ground lap pool surrounded by tropical gardens complete with Indonesian Relief Sculpture water feature
- Grant Master bedroom to the rear of the home with spa bath looking out to the impressive gardens
- 2 Separate living areas, formal and casual dining
- Walk across the sundeck to the elevated timber gazebo looking out over the pool and garden, room for your day bed for your afternoon siesta
- Energy Savers with Pool Tariff 33, Solar HWS, 3.5kw Solar Panels
- Split system air-conditioning throughout, roof ventilation system
- Hardwood timber floors to Bed 2 & 3
- Retractable insect screens throughout
- Cool Porcelain tiles used throughout living, hallways & Master bedroom
- Majestic tropical gardens with many varieties of palms, automatic watering system
- Corner block 1221m2 private oasis

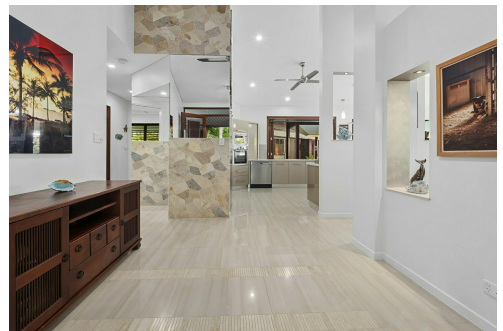
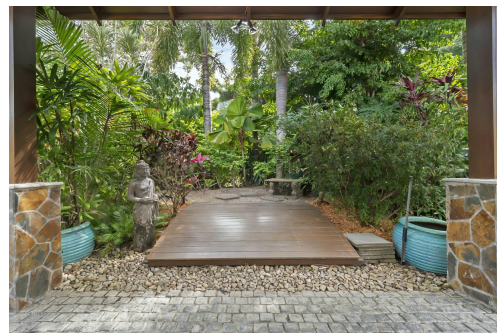
13 Lillian Rd, Palm Cove is located in Argentea at Palm Cove and is nestled between the rugged McAlister Range and the Great Barrier Reef. Palm Cove is a place of relaxed sophistication, where you will enjoy boutiques, restaurants, spas and facilities right on your doorstep. Experience this gorgeous home by visiting one of our open homes.

## More About this Property

<b>Property ID</b>	TCTHSS
<b>Property Type</b>	House
<b>Land Area</b>	1221 m2
<b>Including</b>	Pool

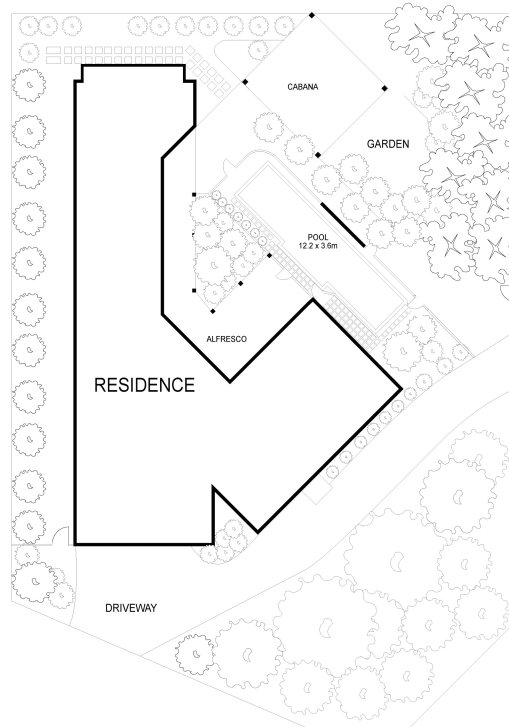
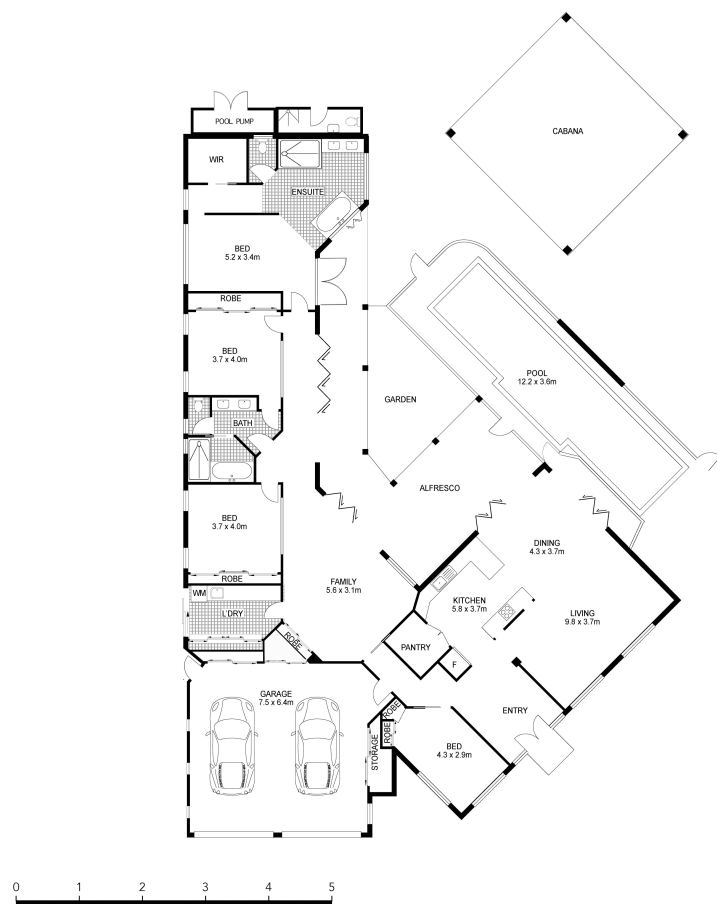
**Craig Gillard 0410 553 557**  
 Licensee | [craig.gillard@ljhooker.com.au](mailto:craig.gillard@ljhooker.com.au)  
**Nick Pelucchi 0410 102 277**  
 Operations Manager | Residential Sales | [nick.pelucchi@ljhooker.com.au](mailto:nick.pelucchi@ljhooker.com.au)

**LJ Hooker Cairns Beaches (07) 4059 0594**  
 Shop 10/471 Varley Street, YORKEYS KNOB QLD 4878  
[cairnsbeaches@ljhooker.com.au](mailto:cairnsbeaches@ljhooker.com.au) | [sales.cairnsbeaches@ljhooker.com.au](mailto:sales.cairnsbeaches@ljhooker.com.au)



**Disclaimer:** All information contained therein is gathered from relevant third parties sources. We cannot guarantee or give any warranty about the information provided. Interested parties must rely solely on their own enquiries.

**LJ Hooker Cairns Beaches**  
**(07) 4059 0594**



INT: 316 m<sup>2</sup>

Scale in metres. Indicative only. Dimensions are approximate. All information contained herein is gathered from sources we believe to be reliable. However, we cannot guarantee its accuracy and interested persons should rely on their own enquiries.

13 Lillian Road, Palm Cove