



Palm Cove, 12 Camelia Court

BRAND NEW HOME NEAR THE BEACH

MODERN HOME VACANT NOW AND READY FOR NEW OWNERS

If you like the idea of a new build without the actual build, then this brand new fully optioned home located in the heart of Palm Cove may be just the ticket.

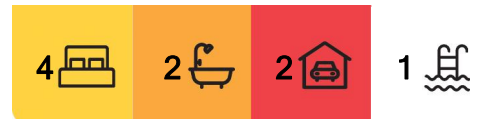
Recently completed, this executive home's attractive fully landscaped street appeal is emphasised by the geometric lines of the skillion roof line combined with the feature timber entry door.

Located at the front of the home, the large master bedroom is a true retreat with its air conditioning, ceiling fan, VJ panelling, louvre windows, walk-in wardrobe and stunning ensuite complete with floating twin sink vanity and dual rose shower.

At the heart of the home is the breezy, spacious, open plan living space, the hub around



Disclaimer: All information contained therein is gathered from relevant third parties sources. We cannot guarantee or give any warranty about the information provided. Interested parties must rely solely on their own enquiries.



For Sale
Brand New Build Offers Invited

View
By Appointment

Contact
Shane Wight
0409 417 316
swight.portdouglas@ljhooker.com.au

LJ Hooker Port Douglas
(07) 4099 4099

which family and friends are sure to gather.

The gourmet kitchen is made for entertaining and comes complete with a large multi-purpose island bench, feature benchtops, large walk-in butler's pantry, induction cooktop, dual ovens and custom cabinetry.

Complementing this space is the full wall of bi-fold doors that retract to access the deep, covered, decked alfresco area that flows through to the sparkling pool and low maintenance lawn and garden area.

Back inside, the secondary bedrooms all emanate off the main living area and all feature air conditioning, ceiling fans and louvre windows.

The main bathroom is similarly impressive and comprises separate bath/shower, toilet and vanity spaces for maximum convenience.

A spacious laundry with built in benchtop, cabinetry and large storage cupboard completes the offering inside.

Additional features include:

- Solar electricity system
- Double garage with remote door and direct access into the house
- Fully landscaped and irrigated gardens including artificial turf
- Fenced back yard
- Within 200 metres of beautiful Palm Cove village and beach
- And much more

Don't delay, this home is ready to go; all it needs is your furniture and personal touches to make it yours. For all the details or to request an exclusive inspection contact Shane on 0409 417 316 or swight.portdouglas@ljhooker.com.au

More About this Property

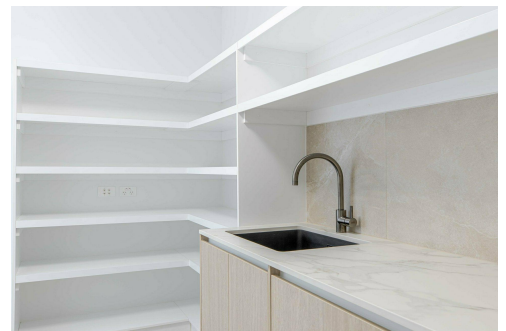
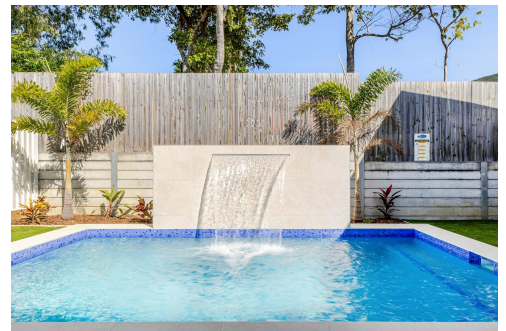
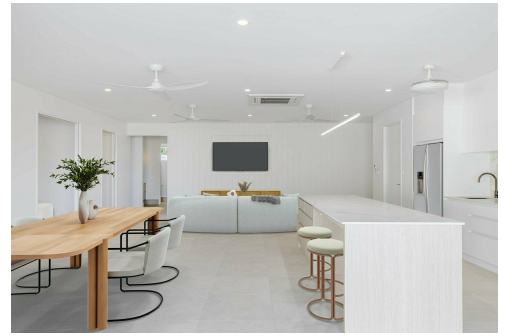
Property ID	13NQF4A
Property Type	House
Land Area	500 m2
Including	Ensuite Air Conditioning Toilets (2) Pool Deck Dishwasher Outdoor Entertaining Built-in-Robes Secure Parking Fully Fenced Remote Garage Solar Panels Ceiling Fans

Shane Wight 0409 417 316

Property Sales and Licensed Auctioneer | swight.portdouglas@ljhooker.com.au

LJ Hooker Port Douglas (07) 4099 4099

Shop 3/31 Macrossan Street, PORT DOUGLAS QLD 4877
portdouglas.ljhooker.com.au | portdouglas@ljhooker.com.au



Disclaimer: All information contained therein is gathered from relevant third parties sources.
We cannot guarantee or give any warranty about the information provided. Interested parties must rely solely on their own enquiries.

**LJ Hooker Port Douglas
(07) 4099 4099**