




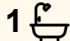
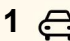
222/49-63 Williams Esplanade, Palm Cove

Lagoon Views with Lasting Value

Positioned on the second level of Amphora Palm Cove, this beautifully kept apartment invites you into a life where mornings ease in with soft lagoon views and evenings stretch out across a generous balcony, drink in hand, as the resort lights shimmer below.

Inside, the space flows effortlessly. A light-filled open-plan design connects kitchen, living and outdoors in one seamless rhythm, anchored by a thoughtfully designed kitchen where generous bench space and abundant cabinetry invite the home chef to spread out, create and keep everything within easy reach. The bedroom is its own quiet retreat—perfectly sized for a king bed, complete with dual access ensuite and glimpses of the lagoon that gently start your day.

Offered fully furnished and immaculately presented, it's ready to enjoy or lease from day one, complete with the convenience of undercover car parking. With strong returns, reasonable body corporate fees and a desirable location just moments from Palm Cove's vibrant dining scene - not to mention easy access to Cairns and Port Douglas - this is a smart addition to any portfolio, with a view to match.

1  1  1 

FOR SALE
High \$400,000's

VIEW
Tue 23rd Jun @ 4:00PM - 5:00PM

AGENTS
Nick Pelucchi
0410 102 277
nick.pelucchi@ljhooker.com.au

AGENCY
LJ Hooker Cairns Beaches
(07) 4059 0594

All information contained therein is gathered from relevant third parties sources.
We cannot guarantee or give any warranty about the information provided.
Interested parties must rely solely on their own enquiries.

 **LJ Hooker**

MORE DETAILS

Property ID U3GHSS
Property Type Apartment
Including Air Conditioning
Pool
Balcony
Dishwasher
Outdoor Entertaining
Built-in-Robes
Secure Parking
Fully Fenced
Resort Pool

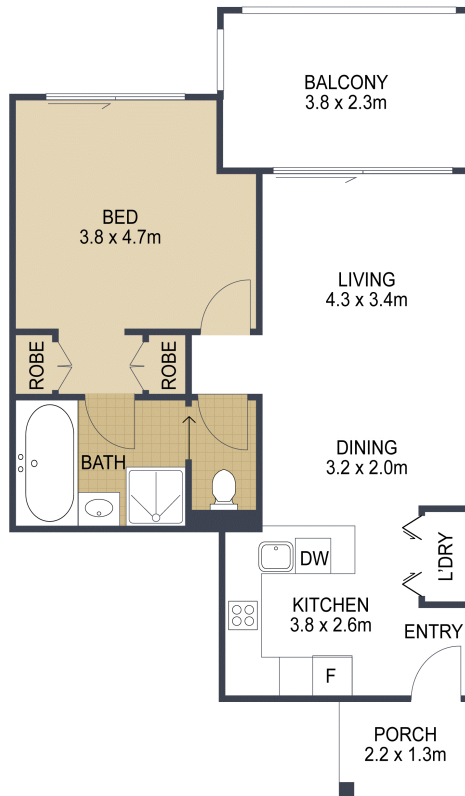
Nick Pelucchi 0410 102 277

Operations Manager | Residential Sales |
nick.pelucchi@ljhooker.com.au

LJ Hooker Cairns Beaches (07) 4059 0594

Shop 10/471 Varley Street, YORKEYS KNOB QLD 4878
cairnsbeaches.ljhooker.com.au |
sales.cairnsbeaches@ljhooker.com.au





	
	1
	1
	1
TOTAL:	71m²

222A/49 - 63 Williams Esplanade, **PALM COVE**

ARTIST'S IMPRESSION ONLY: While every attempt has been made to ensure the accuracy of this floor plan's areas and measurements of doors, windows, rooms and all other items are approximate and no responsibility is taken for any error, omission, or mis-statement. This plan is for illustrative purposes only and should only be used as such by any prospective purchaser.
 Floor plan by: www.open2view.com.au