



3/12 Murlong Crescent, Palm Beach

SOLD BY LEANNE FROHMULLER & ROB CINELLI

Here's a unit with a lock-up garage in a small block, directly across the road from the popular Tallebudgera Estuary water playground.

North Palm Beach's most sought-after waterfront pocket is hiding a brilliant jewel with a cool coastal vibe.

One of just five in a small unit block on 520sqm land, this site will have developers watching very closely over the next few years as prime location waterfront redevelopment land becomes scarcer.

In the meantime, you get to live large for low cost.

- Two good size bedrooms
- Modern bathroom
- Spacious living room opens to sunny deck
- Single lock-up garage
- Low BC fees
- 30m to the sand

When you know, you know. And you know this will go quickly.

Don't delay. Act now. See you soon!

All information contained therein is gathered from relevant third parties sources. We cannot guarantee or give any warranty about the information provided. Interested parties must rely solely on their own enquiries.

2 🏠 1 🚿 1 🚗

FOR SALE

Offers over \$1,100,000

AGENTS

Leanne Frohmuller
0410 633 180
leanne@ljhookersgc.com.au

Rob Cinelli
0407 212 100
rob@ljhookersgc.com.au

AGENCY

LJ Hooker Southern Gold Coast
(07) 5534 4033



Disclaimer:

All information (including but not limited to the property area, floor size, price, address and general property description) is provided as a convenience to you, and has been provided to LJ Hooker by third parties. LJ Hooker is unable to definitively confirm whether the information listed is correct or 100% accurate. LJ Hooker does not accept any liability (direct or indirect) for any injury, loss, claim, damage or any incidental or consequential damages, including but not limited to lost profits or savings, arising out of or in any way connected with the use of any information, or any error, omission or defect in the information, contained on the Website. Information contained on the Website should not be relied upon and you should make your own enquiries and seek legal advice in respect of any property on the Website. Prices displayed on the Website are current at the time of issue, but may change.

MORE DETAILS

Property ID	1VHAF47
Property Type	Unit
Land Area	520 m2
Including	Toilets (1)
	Balcony
	Secure Parking
	Liveability

Leanne Frohmuller 0410 633 180

Sales & Marketing Specialist | leanne@ljhookersgc.com.au

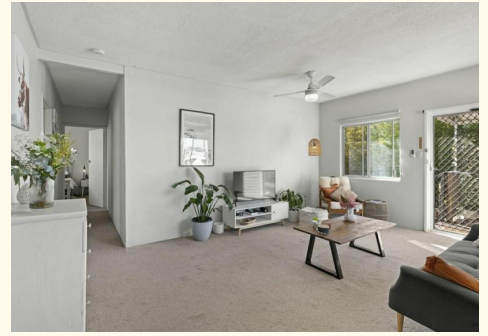
Rob Cinelli 0407 212 100

Sales Specialist Independent Contractor | rob@ljhookersgc.com.au

LJ Hooker Southern Gold Coast (07) 5534 4033

Shop 2, 10 Fifth Avenue, PALM BEACH QLD 4221

southerngoldcoast.ljhooker.com.au | enquiries@ljhookersgc.com.au



3/12 Murlong Crescent
Palm Beach

Bed 2
Bath 1
Car 1

Internal Area: 60m²
External Area: 24m²

Total Area: 84m²

R
PROPERTIES

