

1/1187 Gold Coast Highway, Palm Beach

2 🏠 2 🚗 1 🚘

## **SOLD BY LEANNE FROHMULLER & ROB CINELLI**

Inspection By Appointment

Imagine living this close to the beach, without having to pay the crazy-high beachfront prices.

This ground floor beachside apartment is nicely renovated, so there's nothing to do but move in and start enjoying a fabulous coastal lifestyle.

The unit is only metres from the beach and within easy walking distance to the Palm Beach Surf Club, bars, cafes, restaurants, and the vibrant retail precinct.

The well-maintained complex of just 24 units offers a range of amenities, including a sparkling pool, BBQ area, mini tennis court, and secure underground parking, making it an attractive destination for both short and long-term tenants.

Storing some of life's extra things like pushbikes, surfboards and various other bulky items is catered for you here too.

**FOR SALE**  
Contact Agent

### **AGENTS**

Rob Cinelli  
0407 212 100  
rob@ljhookersgc.com.au

Leanne Frohmuller  
0410 633 180  
leanne@ljhookersgc.com.au

### **AGENCY**

LJ Hooker Southern Gold Coast  
(07) 5534 4033

All information contained therein is gathered from relevant third parties sources. We cannot guarantee or give any warranty about the information provided. Interested parties must rely solely on their own enquiries.



The two-bedroom, two-bathroom apartment is perfect for those looking to invest in a highly sought-after location. The option exists for you to live in the apartment, to rent it out on a permanent basis or as holiday accommodation for additional income between the times you use it yourself.

- Located just steps away from the pristine white sands of Palm Beach
- Easy level walk to the surf club, and the Palm Beach entertainment retail hub
- Public transport out front
- Close to Pacific Motorway
- Within the Palm Beach Currumbin High School catchment area
- Parks, schools, creeks, golf courses all within quick, easy reach
- 4.8km 8-minute drive to Burleigh Heads
- 6km/9-minute drive to John Flynn Hospital
- 7km/12-minute drive to the Gold Coast International & Domestic Airport
- 8km/12-minute to Coolangatta Beach
- 16km/29-minute to Surfers Paradise.
- Council Rates - \$2,250pa approx.
- Water Rates - \$1,875pa approx.

**Disclaimer:**

All information (including but not limited to the property area, floor size, price, address and general property description) is provided as a convenience to you, and has been provided to LJ Hooker by third parties. LJ Hooker is unable to definitively confirm whether the information listed is correct or 100% accurate. LJ Hooker does not accept any liability (direct or indirect) for any injury, loss, claim, damage or any incidental or consequential damages, including but not limited to lost profits or savings, arising out of or in any way connected with the use of any information, or any error, omission or defect in the information, contained on the Website. Information contained on the Website should not be relied upon and you should make your own enquiries and seek legal advice in respect of any property on the Website. Prices displayed on the Website are current at the time of issue, but may change.

## MORE DETAILS

Property ID 1PWMF47  
Property Type Unit  
Including Ensuite  
Air Conditioning  
Toilets (2)  
Intercom  
Pool  
Tennis Court  
Balcony  
Deck  
Dishwasher  
Outdoor Entertaining  
Built-in-Robes  
Secure Parking  
Fully Fenced  
Liveability

### Rob Cinelli 0407 212 100

Sales Specialist Independent Contractor | [rob@ljhookersgc.com.au](mailto:rob@ljhookersgc.com.au)

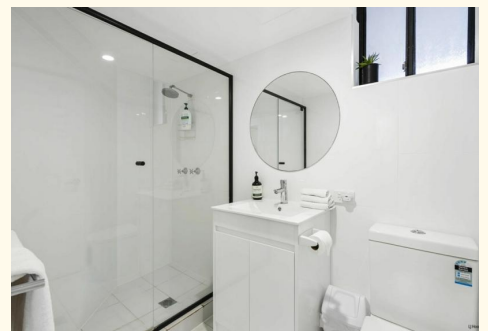
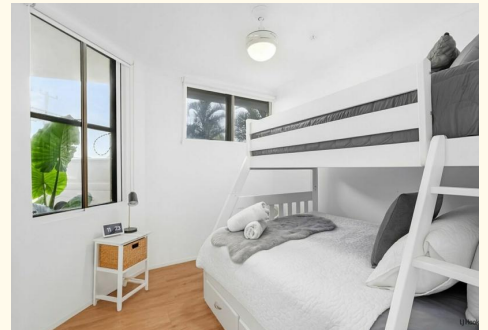
### Leanne Frohmuller 0410 633 180

Sales & Marketing Specialist | [leanne@ljhookersgc.com.au](mailto:leanne@ljhookersgc.com.au)

### LJ Hooker Southern Gold Coast (07) 5534 4033

Shop 2, 10 Fifth Avenue, PALM BEACH QLD 4221

[southerngoldcoast.ljhooker.com.au](http://southerngoldcoast.ljhooker.com.au) | [enquiries@ljhookersgc.com.au](mailto:enquiries@ljhookersgc.com.au)

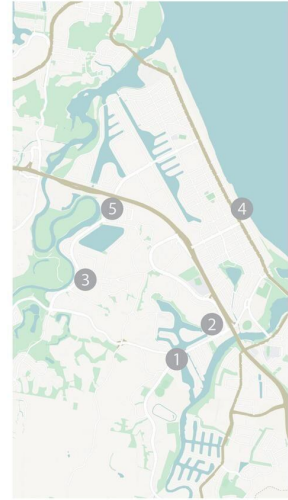


All information contained therein is gathered from relevant third parties sources.  
We cannot guarantee or give any warranty about the information provided.  
Interested parties must rely solely on their own enquiries.



GOLD COAST HIGHWAY, PALM BEACH

1187 GOLD COAST HIGHWAY  
 2 THE PINES SHOPPING CENTRE 3 ELANORA STATE HIGH SCHOOL  
 4 PALM BEACH DINING 5 19TH AVE SHOPPING CENTRE



Location Map

1/1187 Gold Coast Highway, Palm Beach

BED 2 BATH 2 CAR 1

Internal: 69 m<sup>2</sup> | External: 14 m<sup>2</sup> | Approx Total: 83 m<sup>2</sup>

Whilst every attempt has been made to ensure the accuracy of the floor plan contained here, measurements of doors, windows, rooms and any other item are approximate and no responsibility is taken for any error, omission, or misstatement. This plan is for illustrative purposes only and should only be used as such by any prospective purchaser.

