



Palm Beach, 802/14-18 Twenty Eighth Avenue

SOLD BY JONATHAN OWEN

This one-year-old three-bedroom, two-bathroom apartment is the epitome of coastal lifestyle.

Positioned on the North to Northeastern corner of one of Palm Beach's most sought addresses, you'll be spoilt for daily choices. Wake up to views across the ocean, Burleigh Headland, Tallebudgera Creek and beyond, take a short walk down to the nearby cafes for your morning coffee, and spend your afternoons on the golden sands of Palm Beach all just a leisurely stroll from your doorstep!

FEATURES

- Stunning ocean views
- High-end finishes
- 9-storey boutique apartment building featuring just 45 apartments

LJ Hooker

Disclaimer: All information contained therein is gathered from relevant third parties sources. We cannot guarantee or give any warranty about the information provided. Interested parties must rely solely on their own enquiries.

3 2 3

For Sale
Contact Agent

View
ljhooker.com.au/1TQ6F47

Contact
Jonathan Owen
0477 857 537
jonathan@ljhookersgc.com.au

LJ Hooker Southern Gold Coast
(07) 5534 4033

- Open-plan kitchen complete with integrated fridge and Bosch appliances
- Timber flooring
- Master ensuite with walk in wardrobe
- Study nook
- Ducted A/C throughout
- Rooftop pool and entertainment area
- Yoga area
- Bar area with wine fridge
- Electric blinds
- Floor to ceiling tiles in wet areas
- Two bathrooms styled in luxury coastal tones, with thoughtful storage space elegantly designed into each area
- European laundry
- Separate linen cupboard
- 3 car parks, (1 equipped with electric trickle charging)
- large storage cage
- Low Body Corporate \$133.05 approx per week

An outstanding location for all those who love outdoor activities, whether it be swimming, surfing, water skiing, kayaking, fishing, or enjoying a casual bushwalk with amazing ocean and creek views around Burleigh Heads National Park.

LOCATION

Burleigh Headland - approx 2 mins

Palm Beach State Primary School - approx 3 mins

Palm Beach Currumbin State High School - approx 7 mins

Nineteenth Avenue Shopping Centre - approx 6 mins

Coles Palm Beach - approx 6 mins

Currumbin Beach - approx 9 minutes

Gold Coast International Airport - approx 14 mins

Brisbane International Airport - approx 1hr 15 mins

Disclaimer:

All information (including but not limited to the property area, floor size, price, address and general property description) is provided as a convenience to you, and has been provided to LJ Hooker by third parties. LJ Hooker is unable to definitively confirm whether the information listed is correct or 100% accurate. LJ Hooker does not accept any liability (direct or indirect) for any injury, loss, claim, damage or any incidental or consequential damages, including but not limited to lost profits or savings, arising out of or in any way connected with the use of any information, or any error, omission or defect in the information, contained on the Website. Information contained on the Website should not be relied upon and you should make your own enquiries and seek legal advice in respect of any property on the Website. Prices displayed on the Website are current at the time of issue, but may change.



**LJ Hooker Southern Gold Coast
(07) 5534 4033**

Disclaimer: All information contained therein is gathered from relevant third parties sources. We cannot guarantee or give any warranty about the information provided. Interested parties must rely solely on their own enquiries.

More About this Property

Property ID	1TQ6F47
Property Type	Apartment
House Size	140 m ²
Including	Ensuite Air Conditioning Balcony Floorboards Built-in-Robes Secure Parking

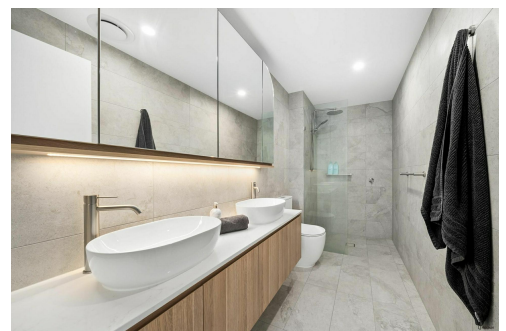
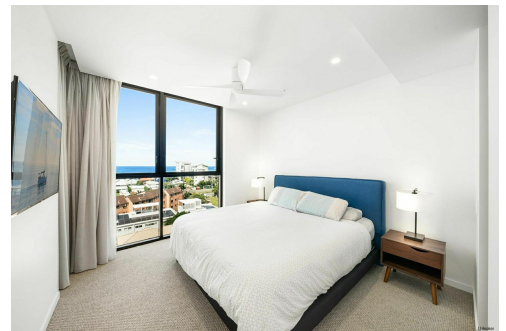
Jonathan Owen 0477 857 537

Sales & Marketing Specialist | jonathan@ljhookersgc.com.au

LJ Hooker Southern Gold Coast (07) 5534 4033

Shop 2, 10 Fifth Avenue, PALM BEACH QLD 4221

southerngoldcoast.ljhooker.com.au | enquiries@ljhookersgc.com.au



LJ Hooker

Disclaimer: All information contained therein is gathered from relevant third parties sources.

We cannot guarantee or give any warranty about the information provided. Interested parties must rely solely on their own enquiries.

**LJ Hooker Southern Gold Coast
(07) 5534 4033**



802/14 Twenty Eighth Avenue, Palm Beach

Internal - 123m²

Covered External - 17m²

Total - 140m²

Dimensions are approximate, interested parties should do their own due diligence. The Floor Planners take no responsibilities for inaccurate measurements or errors.

LJ Hooker

LJ Hooker

LJ Hooker Southern Gold Coast
(07) 5534 4033

Disclaimer: All information contained therein is gathered from relevant third parties sources.
We cannot guarantee or give any warranty about the information provided. Interested parties must rely solely on their own enquiries.