

Palm Beach, 4/2 Snapperman Lane

Luxe Villa Lifestyle on Snapperman Beach

This exquisite residence is nestled right against Snapperman Beach and within an easy level stroll to cafes and restaurants; think top-of-the-line luxury for a lock-and-leave lifestyle. The brilliant 2020 redesign by renowned architect Rob Brown has delivered a home of exceptional sophistication and quality. Set within Palm Beach's premier beachfront complex 'The Anchorage', this freestanding villa is a marvel; the north aspect fills flawless interiors with light, all the while immersed in the privacy of a lush, tropical backdrop with view through to Pittwater.

This is a home that puts the focus on livability; it's characterised by clean, linear forms and a pared-back material palette, with an open design on the main floor giving way to a massive, north-facing entertaining deck; the family room on the ground level spills out to an expansive courtyard terrace and private gardens, wrapping around two sides of the home.

2

2

3

For Sale
Contact Agent

View
By Appointment

Contact
Peter Robinson
0401 219 077
peter.robinson@ljhooker.com.au

Dennis Kennelly
0477 977 971
dennis.kennelly@ljhooker.com.au

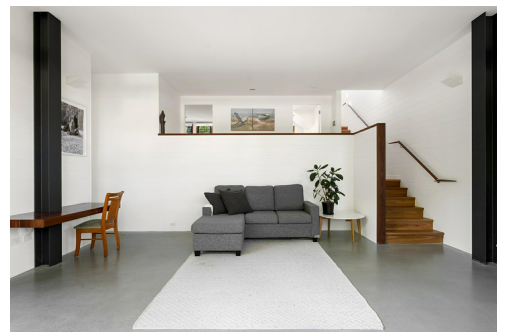
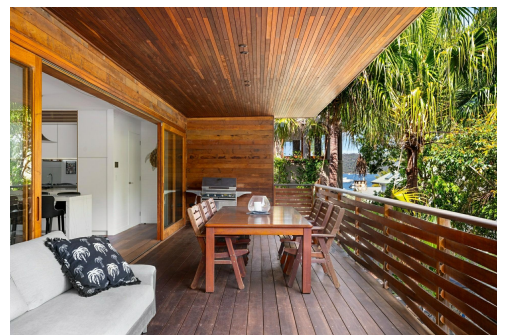


Disclaimer: All information contained therein is gathered from relevant third parties sources. We cannot guarantee or give any warranty about the information provided. Interested parties must rely solely on their own enquiries.

LJ Hooker Palm Beach
(02) 9974 5999

Every detail has been carefully considered, from the deluxe island kitchen fitted with Miele appliances to the custom-designed bedrooms and the polished transitions between indoors and out. There's also a highly versatile, fully self-contained space that's zoned for commercial use —run your own business, rent it out for a healthy return or use as part of your villa; the possibilities are endless. The location is fabulous —it's a stone's throw to wide golden sands of Snapperman Beach and a level stroll to all the cafes, restaurants and boutiques in the heart of Palm Beach.

- Superb 2020 redesign by Rob Brown and Contemporary Builders
- 'The Anchorage'; premier beachfront complex on Snapperman
- One of only four; this is a freestanding home, no common walls
- Open plan living/entertaining on main floor
- Dazzling north aspect, loads of privacy, lush green outlook
- Stacking sliders open interiors to the sheltered, full-length deck with view through to Pittwater
- Deluxe island kitchen features a suite of Miele/gas appliances
- Family room/rumpus opens to expansive sandstone terrace
- Bedrooms feature custom joinery; master includes an ensuite
- Flexible space downstairs can be used for a commercial enterprise or additional living/working space
- Ducted climate control, guest w/c, gas fireplace, security system
- Three parking spaces on title; steps to the beach and village



More About this Property

| | |
|---------------|-----------|
| Property ID | BFGF6Z |
| Property Type | Townhouse |

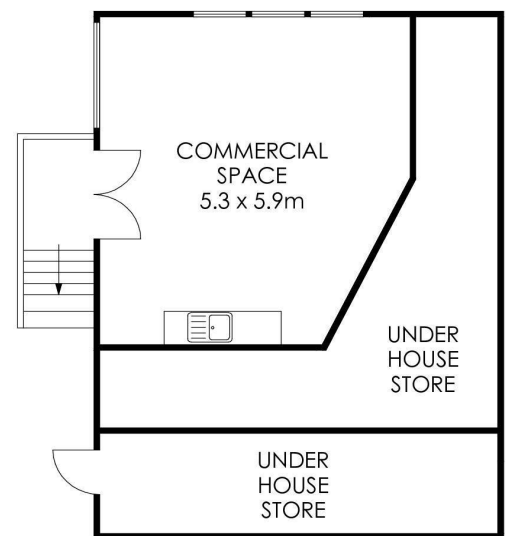
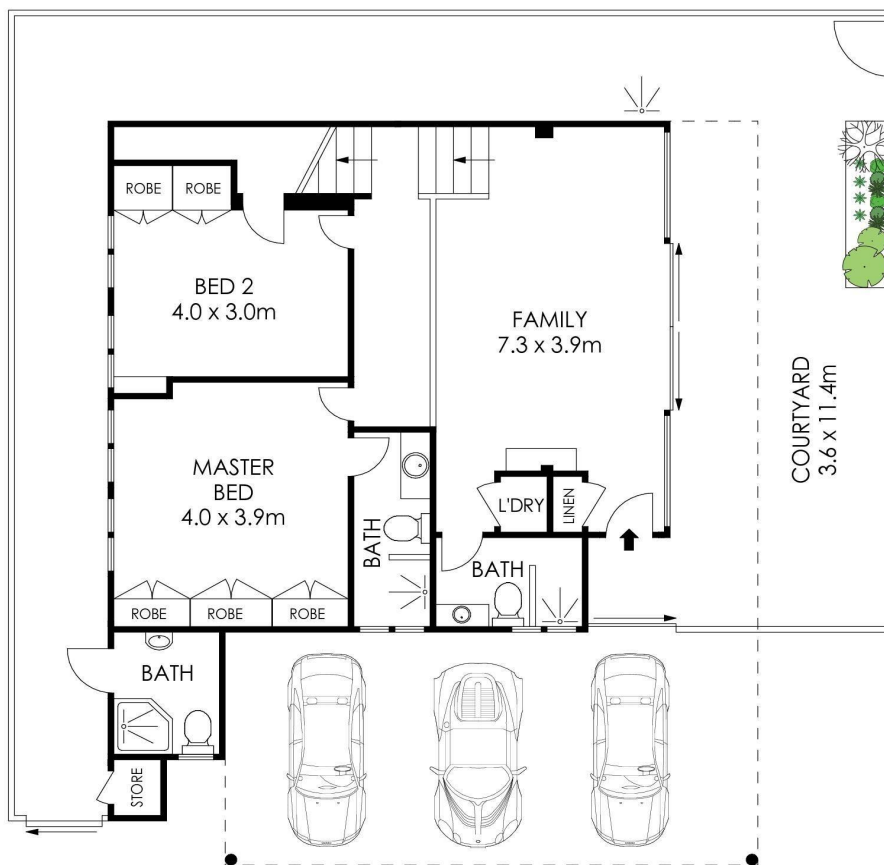
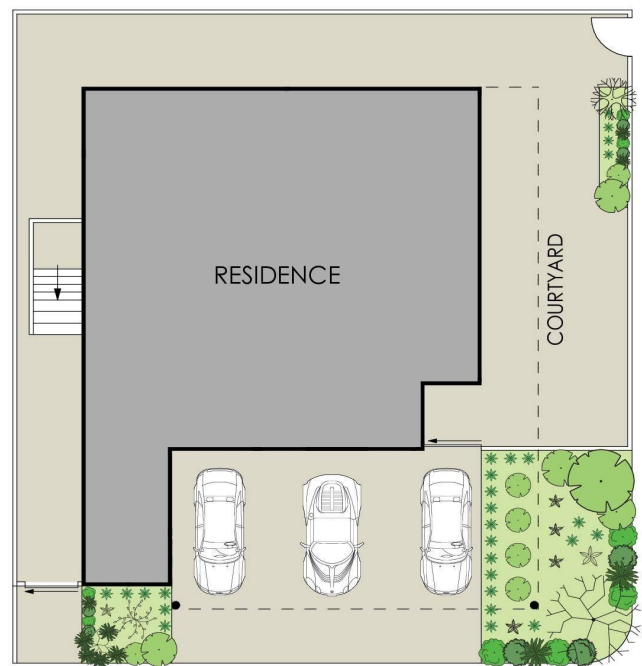
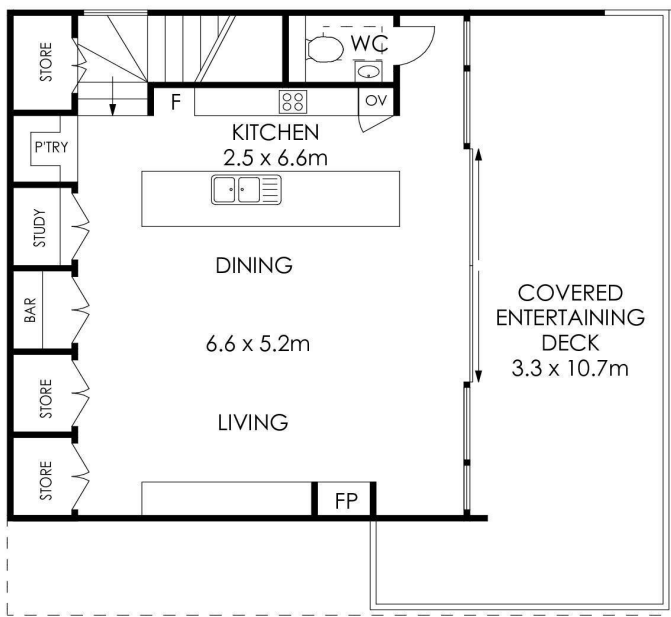
Peter Robinson 0401 219 077
Principal “ Peter Robinson Real Estate Pty Ltd CLN 10121506 |
peter.robinson@ljhooker.com.au
Dennis Kennelly 0477 977 971
Licensed Real Estate Agent | Residential and Commercial |
dennis.kennelly@ljhooker.com.au

LJ Hooker Palm Beach (02) 9974 5999
1073 Barrenjoey Road, PALM BEACH NSW 2108
palmbeach.ljhooker.com.au | office@ljhpb.com.au



Disclaimer: All information contained therein is gathered from relevant third parties sources. We cannot guarantee or give any warranty about the information provided. Interested parties must rely solely on their own enquiries.

LJ Hooker Palm Beach
(02) 9974 5999



APPROX. INTERNAL AREA = 219 m²
 APPROX. EXTERNAL AREA = 123 m²
 TOTAL = 342 m²

PLANS SHOWN ONLY INDICATIVE OF LAYOUT. DIMENSIONS ARE APPROXIMATE.



4/2 Snapperman Lane, Palm Beach

LJ Hooker

LJ Hooker

LJ Hooker Palm Beach
 (02) 9974 5999

Disclaimer: All information contained therein is gathered from relevant third parties sources. We cannot guarantee or give any warranty about the information provided. Interested parties must rely solely on their own enquiries.