



## Palm Beach, 985 Barrenjoey Road

### Refined Waterfront Living in Palm Beach: "Summer Crest"

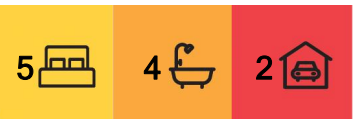
Nestled on an impressive 742sqm parcel of prime waterfront land, "Summer Crest" is a spacious and well-presented property offering an idyllic lifestyle. Boasting panoramic views across Pittwater to Ku-ring-gai National Park, this deep waterfront residence features premium amenities, including a private jetty, boathouse, and waterfront spa, making it a prestige offering in Palm Beach.

- A serene parents' retreat on the upper includes Pittwater views, a private deck, ensuite, and walk-in robe. This level also offers three additional bedrooms, a study, and a shared bathroom, creating a perfect sanctuary for family living.

- The heart of the home, with floor-to-ceiling glass framing world-class water views. The expansive family/lounge area includes a wet bar for seamless entertaining, while a king-sized bedroom or flexible bunk room adds versatility. A convenient powder room and storage complete this floor.



**Disclaimer:** All information contained therein is gathered from relevant third parties sources. We cannot guarantee or give any warranty about the information provided. Interested parties must rely solely on their own enquiries.



**For Sale**  
For Sale

**View**  
By Appointment

**Contact**  
**Peter Robinson**  
0401 219 077  
peter.robinson@ljhooker.com.au

**Greer Bradbury**  
0490 429 142  
GBradbury@ljhpb.com.au

**LJ Hooker Palm Beach**  
**(02) 9974 5999**



- Bright and modern, the lower level is designed for entertaining. A spacious open-plan kitchen, complete with an island benchtop, generous pantry, and storage, flows onto an expansive deck. Perfect for summer soirees, the deck accommodates both dining and lounge areas, all set against the breathtaking Pittwater backdrop

- A beautifully landscaped terraced garden guides you to a waterfront haven, complete with an inviting inground spa, and a sleek, modern boathouse so stunning you'll never want to leave. The private jetty not only provides seamless access to Pittwater for boating and water adventures but also serves as an extraordinary setting for unforgettable waterfront entertaining.

- A double carport and off-street parking for an additional two cars provide practical convenience for residents and guests alike.

- Just moments from Palm Beach's iconic beaches, cafes, and shops. Conveniently situated on the Manly and city bus route for easy access to Sydney.

"Summer Crest" combines refined living with functional design and breathtaking views, offering a rare opportunity to enjoy the best of Pittwater living year-round.

## More About this Property

Property ID	BHVF6Z
Property Type	House
Land Area	742.7 m²
Including	Beach Front Close to Transport Water Views

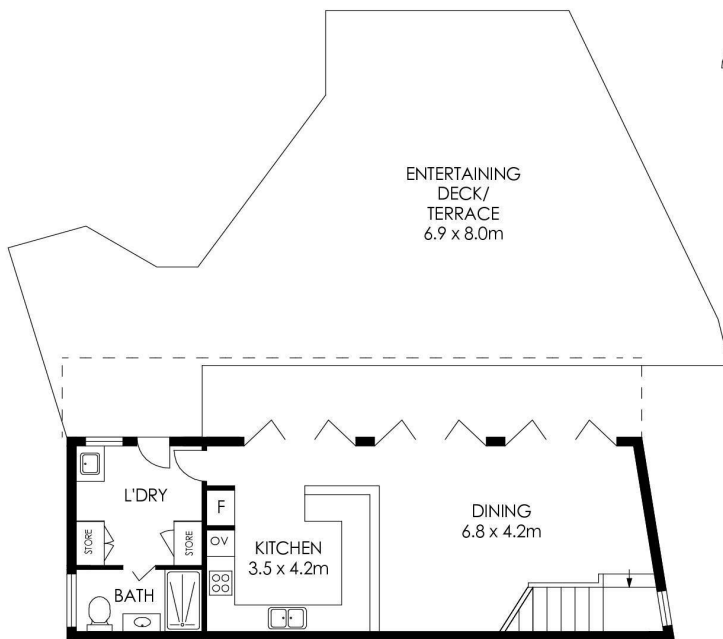
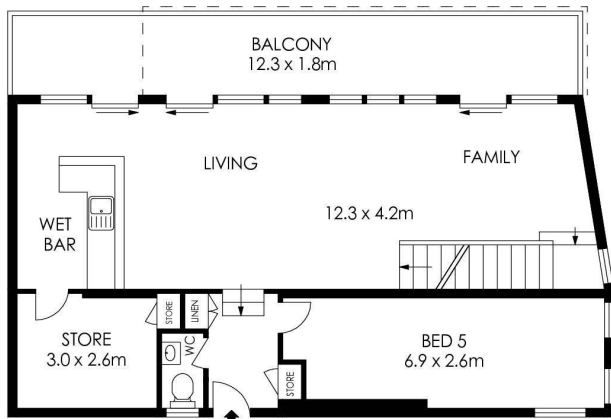
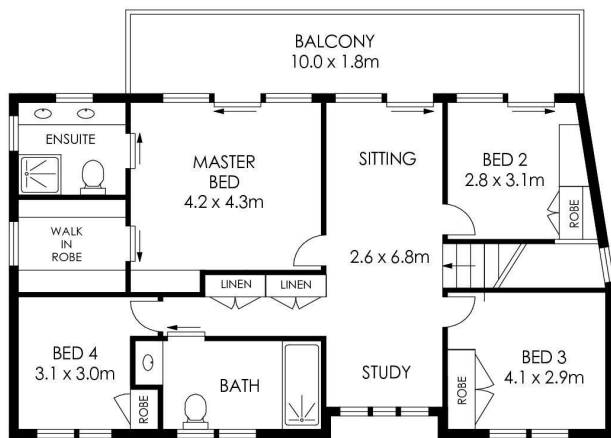
**Peter Robinson 0401 219 077**  
Principal “ Peter Robinson Real Estate Pty Ltd CLN 10121506 |  
peter.robinson@ljhooker.com.au  
**Greer Bradbury 0490 429 142**  
Sales Associate | GBradbury@ljhpb.com.au

**LJ Hooker Palm Beach (02) 9974 5999**  
1073 Barrenjoey Road, PALM BEACH NSW 2108  
palmbeach.ljhooker.com.au | office@ljhpb.com.au



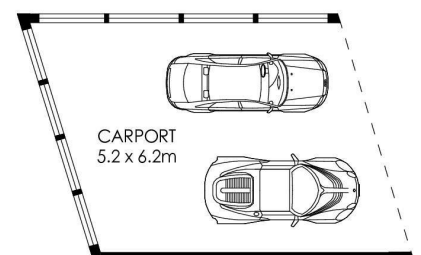
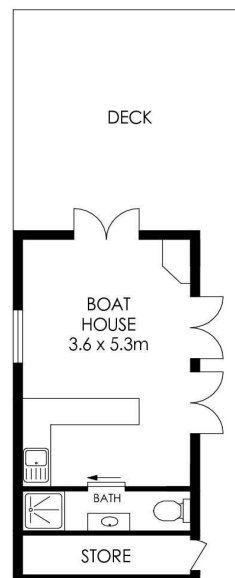
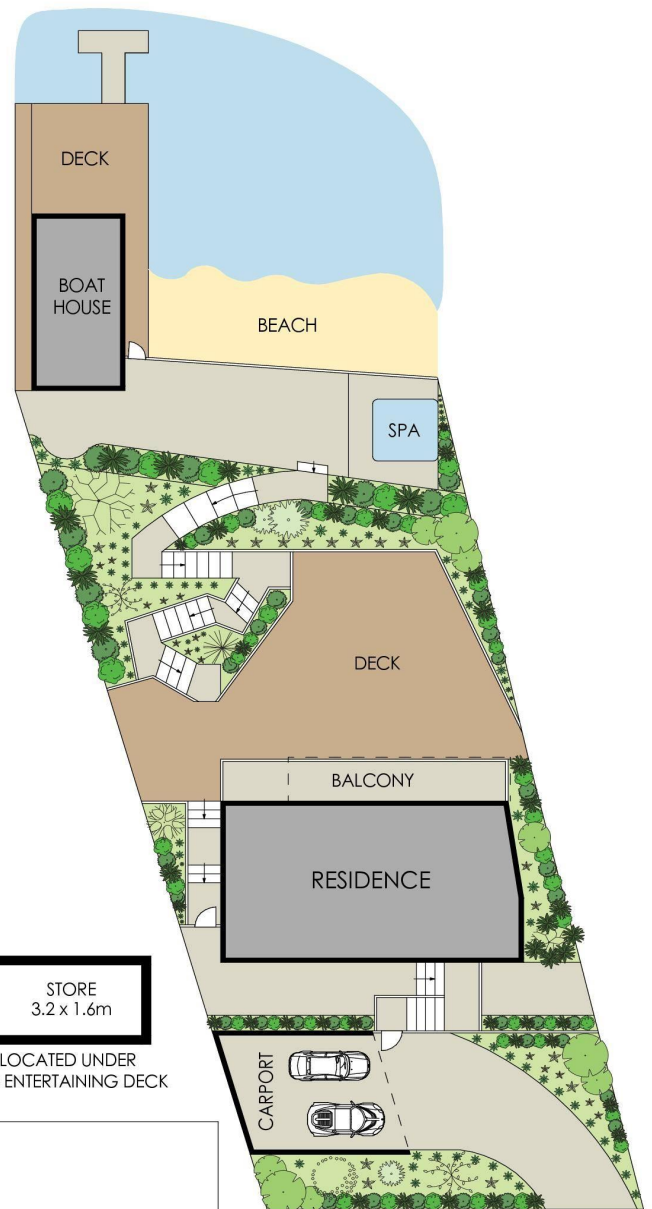
**Disclaimer:** All information contained therein is gathered from relevant third parties sources. We cannot guarantee or give any warranty about the information provided. Interested parties must rely solely on their own enquiries.

**LJ Hooker Palm Beach**  
**(02) 9974 5999**



APPROX. INTERNAL AREA = 256 m<sup>2</sup>  
 APPROX. EXTERNAL AREA = 174 m<sup>2</sup>  
 TOTAL = 430 m<sup>2</sup>  
 LAND SIZE = 742.7 m<sup>2</sup>

PLANS SHOWN ONLY INDICATIVE OF LAYOUT. DIMENSIONS ARE APPROXIMATE.



**985 Barrenjoey Road, Palm Beach**

**LJ Hooker**

**LJ Hooker**

**LJ Hooker Palm Beach**  
 (02) 9974 5999

**Disclaimer:** All information contained therein is gathered from relevant third parties sources. We cannot guarantee or give any warranty about the information provided. Interested parties must rely solely on their own enquiries.