


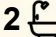
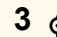


953 Barrenjoey Road, Palm Beach

## Exceptional Deep Waterfront with Private Jetty, Impressive Boathouse and Direct Access to the Pittwater

Commanding a prized north-facing deep waterfront position, this mid-century cedar and sandstone residence offers breathtaking 180-degree views across Pittwater to Ku-ring-gai Chase National Park. With a recently approved DA for an extended private jetty and pontoon, the property combines immediate lifestyle appeal with exceptional long-term potential. Originally selected to showcase the beauty of the Northern Beaches to Pope Paul VI, the unique site remains one of Palm Beach's most remarkable vantage points—an enduring setting of history, character and limitless possibility.

This one-of-a-kind home boasts a relaxed split-level floorplan with soaring raked ceilings and expansive wraparound decks that seamlessly blend indoor and outdoor living. Floor-to-ceiling glass and timber doors capture breathtaking 180 degree water views, flooding the interiors with natural light, sea breezes, and an undeniable sense of serenity.

2  2  3 

**FOR SALE**

\$7.25m

**VIEW**

By Appointment

**AGENTS**

BJ Edwards  
0420 304 140  
bjedwards@ljhpb.com.au

David Edwards  
0415 440 044  
dedwards@ljhpb.com.au

**AGENCY**

LJ Hooker Palm Beach  
(02) 9974 5999

All information contained therein is gathered from relevant third parties sources. We cannot guarantee or give any warranty about the information provided. Interested parties must rely solely on their own enquiries.

 **LJ Hooker**

The substantial boathouse, once a seaplane hangar, is a standout feature of the property. Equipped with a specially designed turntable, an extensive, gently sloping boatramp into the water, wharf and deck, this space is perfect for boating enthusiasts looking to take full advantage of Pittwater's pristine waterways. Complete with elegant sandstone steps and private cove that provide an easy transition from land to shallow water, ideal for leisurely wading or launching a kayak and providing direct access to endless aquatic adventures.

The residence also comes with a recently approved DA for a private jetty extension leading to a state-of-the-art pontoon, creating an exceptional berthing area for larger vessels. This upgrade will significantly enhance the property's boating capabilities, allowing for effortless mooring and water access. With Pittwater's sheltered waters at your doorstep, enjoy seamless boating experiences, whether it's setting sail for a day of fishing, exploring secluded beaches or cruising to waterfront restaurants. The property's unique waterfront facilities make it an ideal haven for boating enthusiasts of all levels.

Situated in a highly sought-after Palm Beach enclave, just moments from iconic beaches, cafes, and boutique shopping, this entertainer's dream offers a unique opportunity to embrace waterfront living in one of Sydney's most coveted locations.

#### Features:

- Absolute deep waterfront with direct access to Pittwater's pristine waters
- Historic home on a generous 987sqm block
- Unique development opportunity with full building site available for extension
- Light-filled, split-level living with panoramic views towards Ku-ring-gai Chase National Park
- Open-plan lounge and dining area with polished timber floors and fresh, bright interiors
- Expansive commercial kitchen with ample bench space and a stunning free-standing Vintage De'Longhi dual fuel cooker
- Two master-sized bedrooms, each with built-ins and ensuites; one with a walk-in robe
- Multiple alfresco spaces and covered outdoor entertaining areas
- Landscaped gardens with rare level lawn and firepit overlooking the expansive views of the Pittwater
- Iconic boatshed is spacious and well-appointed with ample storage and direct water access for boats, kayaks, and paddleboards
- Elegant sandstone steps gently descend into the water, smooth and well-crafted, these sturdy steps provide a easy transition from land to water, perfect for leisurely wading or launching small boats or sail craft

- Recently approved DA for a private jetty extension, including a ramp and pontoon, creating an exceptional berthing area for larger vessels.

Nestled on the calm waters of Pittwater, this extraordinary home embodies a rare blend of history, character, and coastal charm-offering an unmatched lifestyle opportunity.

## MORE DETAILS

Property ID	BJSF6Z
Property Type	House
Land Area	987 m2
Including	Water Front
	Water Views

### **BJ Edwards 0420 304 140**

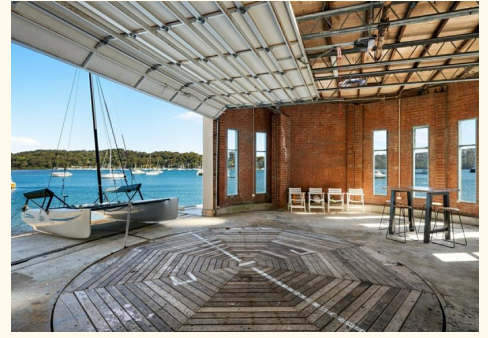
Licensed Real Estate Agent | [bjedwards@ljhpb.com.au](mailto:bjedwards@ljhpb.com.au)

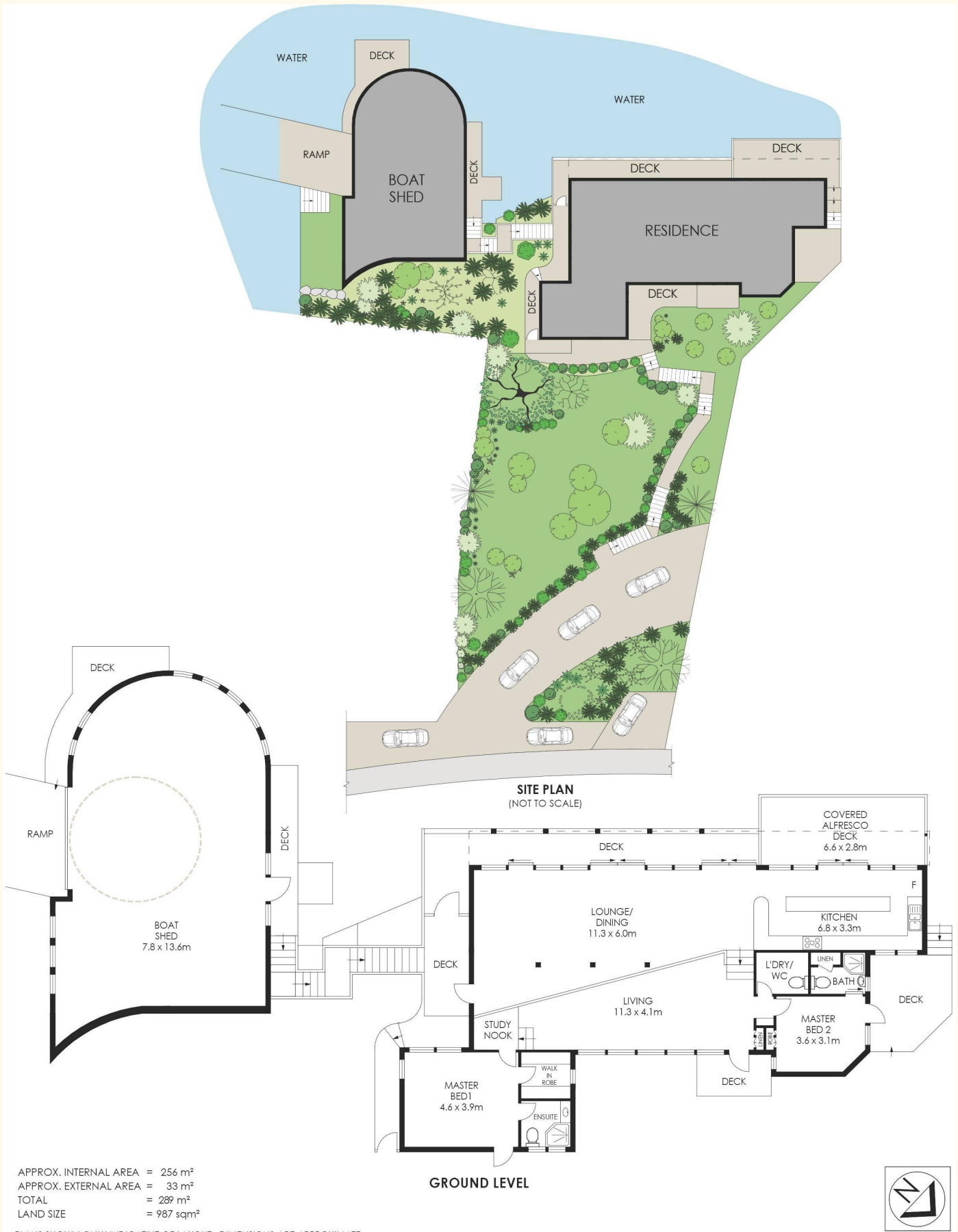
### **David Edwards 0415 440 044**

Director | Licensee | David Edwards Palm Beach Realty Pty Ltd CLN 348342 | [dedwards@ljhpb.com.au](mailto:dedwards@ljhpb.com.au)

### **LJ Hooker Palm Beach (02) 9974 5999**

1073 Barrenjoey Road, PALM BEACH NSW 2108  
[palmbeach.ljhooker.com.au](http://palmbeach.ljhooker.com.au) | [office@ljhpb.com.au](mailto:office@ljhpb.com.au)





# 953 Barrenjoey Road, Palm Beach



All information contained therein is gathered from relevant third parties sources. We cannot guarantee or give any warranty about the information provided. Interested parties must rely solely on their own enquiries.

