



Palm Beach, 95 Pacific Road

State-of-the-Art Smart Home with Iconic Beach & Lighthouse Views

This extraordinary residence redefines luxury with cutting-edge automation, offering a seamless blend of sophistication, comfort, and technology. Basking in uninterrupted north-facing views across Palm Beach and Barrenjoey Headland, this automated smart home is as intelligent as it is beautiful—a true retreat for modern living.

Every aspect of this architectural masterpiece has been meticulously designed for effortless comfort and control. From security, lighting, ventilation, and garden irrigation the entire home can be managed at the touch of a button. The state-of-the-art automation system allows remote control of lighting, automated shutters, windows, external cameras, alarm system and irrigation.

The dual-level layout is both expansive and inviting, with soaring double-height ceilings framed by exposed trusses. Neutral tones and premium finishes enhance the seamless



Disclaimer: All information contained therein is gathered from relevant third parties sources. We cannot guarantee or give any warranty about the information provided. Interested parties must rely solely on their own enquiries.

5

5

3

For Sale
Contact Agent

View
By Appointment

Contact
BJ Edwards
0420 304 140
bjedwards@ljhpb.com.au
David Edwards
0415 440 044
david.edwards@ljhooker.com.au

LJ Hooker Palm Beach
(02) 9974 5999

connection between sunlit interiors and outdoor spaces, including a 12.5m saltwater pool, gas firepit, and dining cabana. With a due north aspect, the home is bathed in natural light year-round while remaining protected from cold southerly winds.

The kitchen is a showpiece of both style and functionality, featuring a vast Calacatta marble island bench ideal for entertaining. Advanced appliances and intelligent lighting create a setting that is as practical as it is beautiful.

On the lower level, the sleeping quarters exude elegance and comfort. Three ensuite bedrooms, a children's bunk room, and a lavish master suite offer custom-designed wardrobes, luxury bathrooms, and direct access to the terrace and pool. The master wing is a private sanctuary, complete with a sitting room, his-and-hers wardrobes, and direct outdoor access.

Set in a prestigious position at the lower end of Pacific Road, this home integrates every element of modern luxury with advanced smart technology, providing a lifestyle of effortless ease in one of Palm Beach's most exclusive settings.

Features:

- Full smart home automation with remote control and access
- Spectacular north-facing views across Palm Beach & Barrenjoey Headland
- Architecturally designed and master-built to perfection
- Dual-level design with vast open-plan living and entertaining zones
- Premium finishes throughout, with a seamless indoor/outdoor flow
- Sunlit terraces, 12.5m saltwater pool, gas firepit & dining cabana
- Individually controlled climate control system & Jetmaster fireplace for year-round comfort
- Chef's kitchen with Calacatta marble island & high-end appliances
- Private master suite with sitting room, pool access & luxury walk-in robes
- Two additional ensuite bedrooms plus a bunk room and seperate ensuite for children
- Two wine cellars, guest powder room, home office & designer lighting
- Wireless control of all home systems via Phillips DALI automation
- large seperate home gym or home cinema
- Secure, low-maintenance living with fully automated irrigated gardens

This is more than just a home-it's an intelligent sanctuary, designed for ultimate comfort, security, and effortless luxury.



LJ Hooker Palm Beach
(02) 9974 5999

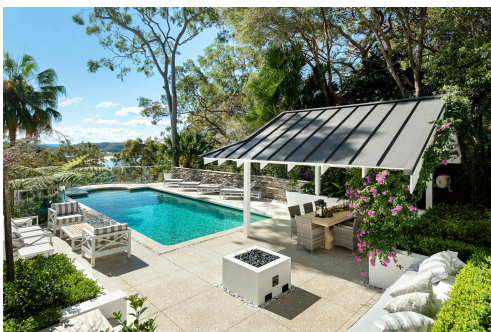
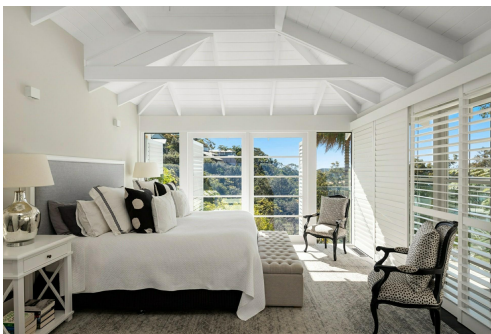
Disclaimer: All information contained therein is gathered from relevant third parties sources. We cannot guarantee or give any warranty about the information provided. Interested parties must rely solely on their own enquiries.

More About this Property

Property ID	BGUF6Z
Property Type	House
Land Area	1062 m2
Including	Air Conditioning Alarm Pool Water Views

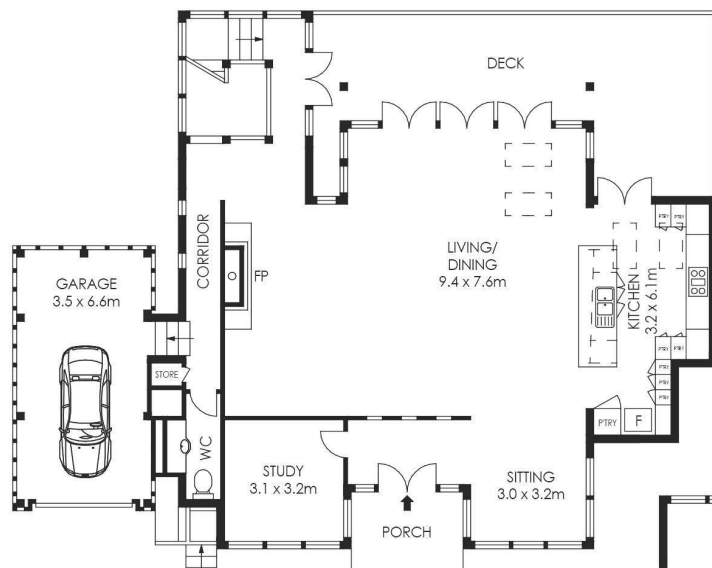
BJ Edwards 0420 304 140
Licensed Real Estate Agent | bjedwards@ljhpb.com.au
David Edwards 0415 440 044
Director | Licensee | David Edwards Palm Beach Realty Pty Ltd CLN 348342â€ | david.edwards@ljhooker.com.au

LJ Hooker Palm Beach (02) 9974 5999
1073 Barrenjoey Road, PALM BEACH NSW 2108
palmbeach.ljhooker.com.au | office@ljhpb.com.au

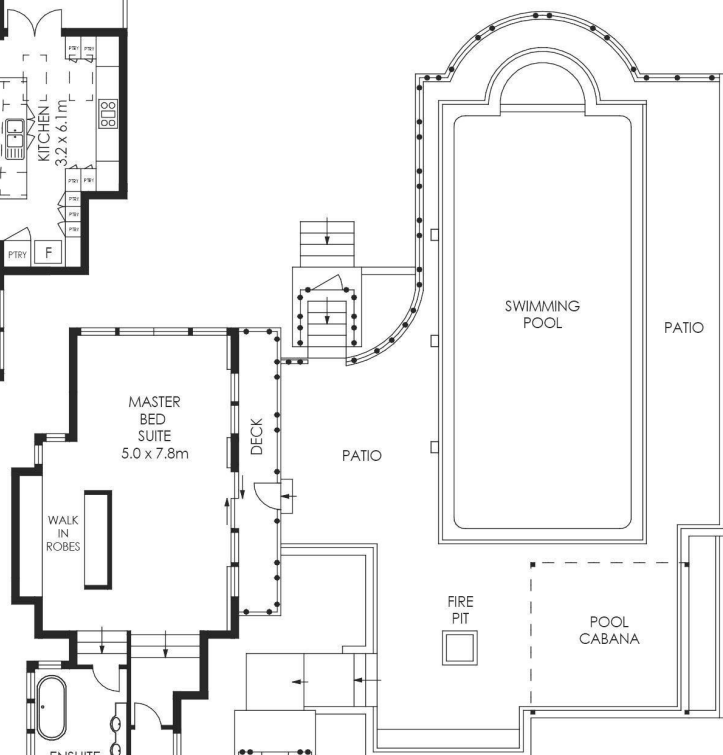


Disclaimer: All information contained therein is gathered from relevant third parties sources.
We cannot guarantee or give any warranty about the information provided. Interested parties must rely solely on their own enquiries.

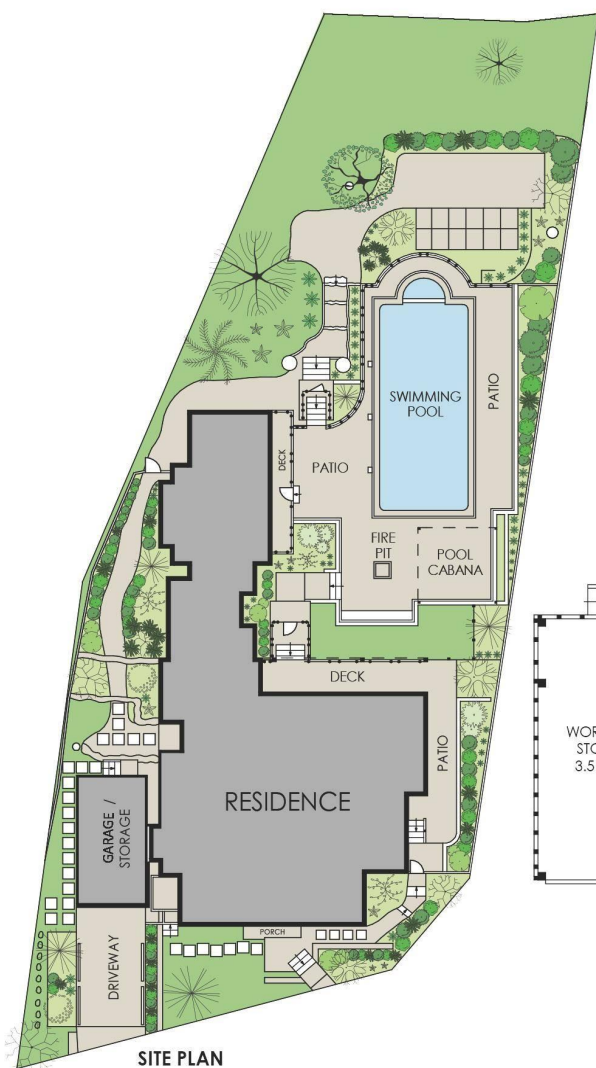
LJ Hooker Palm Beach
(02) 9974 5999



GROUND FLOOR



LOWER GROUND FLOOR



SITE PLAN

APPROX. INTERNAL AREA = 349 m²
 APPROX. EXTERNAL AREA = 243 m²
 TOTAL = 592 m²
 LAND SIZE = 1062.6 m²



PLANS SHOWN ONLY INDICATIVE OF LAYOUT. DIMENSIONS ARE APPROXIMATE.

95 Pacific Road, Palm Beach



LJ Hooker Palm Beach
 (02) 9974 5999

Disclaimer: All information contained therein is gathered from relevant third parties sources.
 We cannot guarantee or give any warranty about the information provided. Interested parties must rely solely on their own enquiries.