



88 Bynya Road, Palm Beach

## Contemporary Family Home With Ocean Views, Pool and Spa

Set across a rare level block, this expansive two-story home offers the very best in beachside living. The home's enviable location, nestled between two iconic beaches and Pittwater, signals the immediate allure of this exclusive contemporary residence.

The home's striking geometric facade is complemented by established native landscaping and richly layered, textural interiors. Inside, the layout has been meticulously crafted to frame stunning vistas across Whale Beach and north to Cape Three Points. There's a seamless connection between the indoors and outdoors, with living spaces flowing effortlessly to a level courtyard with a pool and spa, multiple decks and al fresco dining areas, which all boast expansive views and encourage time spent outside.

A multi-level design and a flexible open-plan living, kitchen and dining are perfectly suited to family living, with ample space for weekend guests. Surrounded by natural beauty, the home is cocooned in greenery and flooded with natural light, creating a warm and intimate haven that still feels exclusive.

- Gated driveway with three-car garage and under-house storage
- Two levels, five well-appointed bedrooms with built-ins, four

All information contained therein is gathered from relevant third parties sources. We cannot guarantee or give any warranty about the information provided. Interested parties must rely solely on their own enquiries.

5 🏠 4 🚗 2 🚘

**FOR SALE**  
Sold \$4,700,000

### AGENTS

Peter Robinson  
0401 219 077  
peter.robinson@ljhooker.com.au

### AGENCY

LJ Hooker Palm Beach  
(02) 9974 5999

 **LJ Hooker**

- bathrooms and countless decks for entertaining
- Top floor main suite; stunning ocean views from attached deck, walk-in robe, ensuite with a spa bath
- Two separate living spaces on each level, lower living space features a gas fireplace
- Internal laundry and a separate study
- Private outdoor areas surrounded by tree canopy, with gas heated pool and spa, level lawns, well-established gardens
- Sleek, spacious kitchen with high ceilings, island bench, ample storage and modern appliances including gas stove, large double sink
- Kitchen overlooks pool and connects to gorgeous alfresco deck
- Polished floorboards and bespoke finishes throughout
- Bi-fold glass doors open to outdoor entertaining areas and flood the home with natural light
- Accommodates and easily adapts to a family's changing lifestyle needs

## MORE DETAILS

Property ID                    BNTF6Z  
 Property Type                House  
 Land Area                     714.5 m2

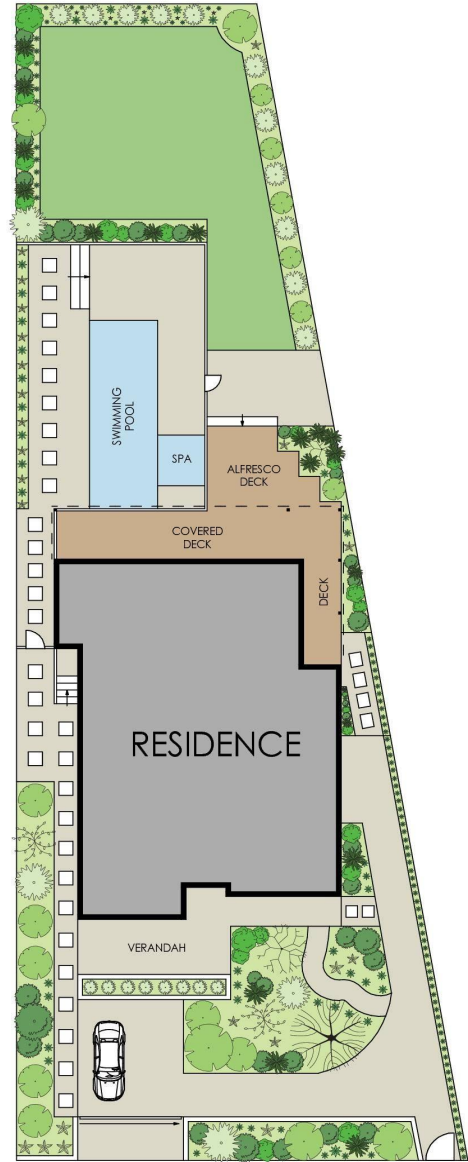
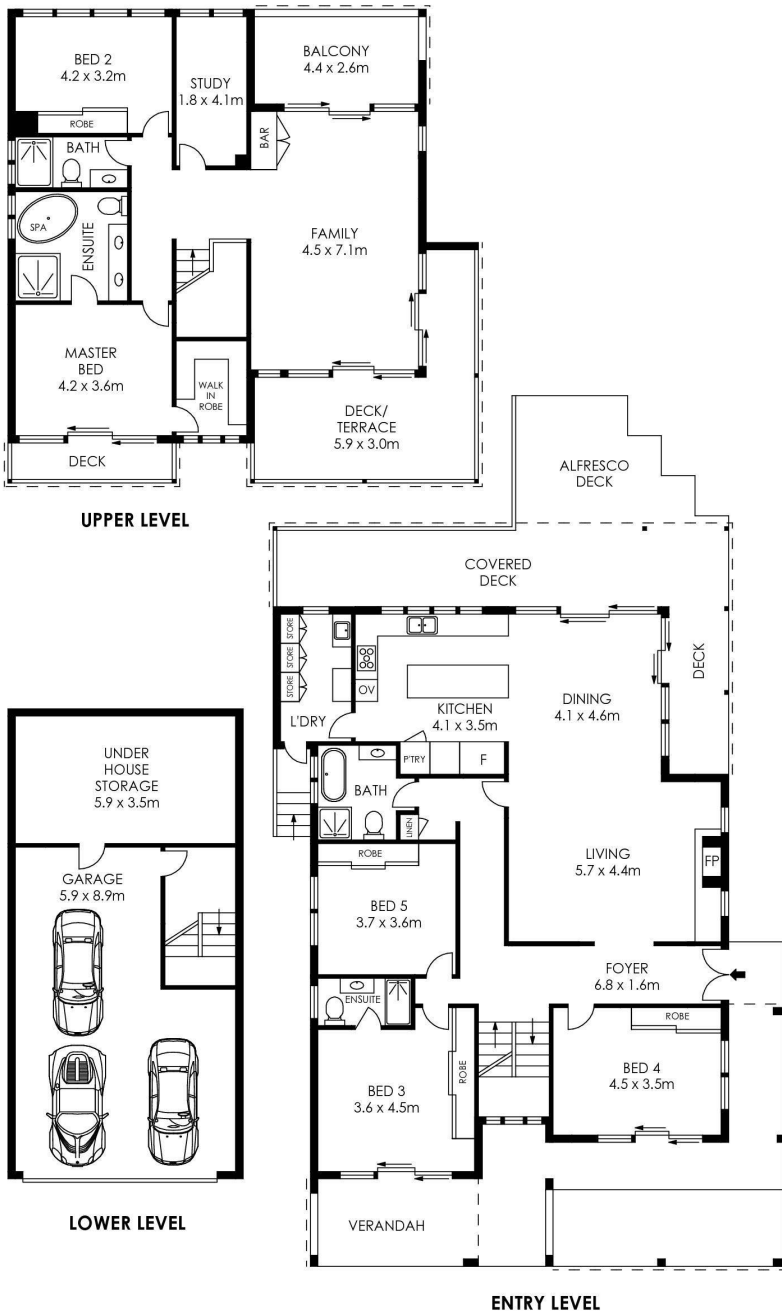
### Peter Robinson 0401 219 077

Principal & Peter Robinson Real Estate Pty Ltd CLN 10121506 |  
 peter.robinson@ljhooker.com.au

### LJ Hooker Palm Beach (02) 9974 5999

1073 Barrenjoey Road, PALM BEACH NSW 2108  
 palmbeach.ljhooker.com.au | office@ljhpb.com.au





APPROX. INTERNAL AREA = 331 m<sup>2</sup>  
 APPROX. EXTERNAL AREA = 131 m<sup>2</sup>  
 TOTAL = 462 m<sup>2</sup>  
 LAND SIZE = 714.5 sqm



PLANS SHOWN ONLY INDICATIVE OF LAYOUT. DIMENSIONS ARE APPROXIMATE.

## 88 Bynya Road, Palm Beach

All information contained therein is gathered from relevant third parties sources. We cannot guarantee or give any warranty about the information provided. Interested parties must rely solely on their own enquiries.