



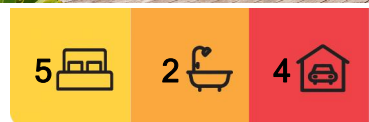
Palm Beach, 842 Barrenjoey Road

A Pittwater Retreat of Timeless Charm and Modern Romance

Set against a serene waterfront backdrop, this enchanting Pittwater home invites a slower pace of life. Blending the rustic allure of a vintage fisherman's cottage with modern elegance, it's no wonder this property has graced the pages of prestigious design magazines worldwide. Here, heritage meets contemporary living in a breathtaking setting that feels both exclusive and intimate.

Inside, every detail is crafted for beauty and ease: crisp white interiors, painted timber floors, and leadlight windows that cast a golden glow through French doors, filling the space with warmth. A sprawling deck and firepit, nestled along the ancient ridgeline, create a private haven for alfresco entertaining with sweeping views of Pittwater.

Whether for year-round living or as an idyllic weekend retreat, the home offers a light-filled, treehouse-like escape with spaces thoughtfully zoned for family life. The lower level is



For Sale
Guide \$3.5M

View
By Appointment

Contact
Peter Robinson
0401 219 077
peter.robinson@ljhooker.com.au

Greer Bradbury
0490 429 142
GBradbury@ljhpb.com.au



Disclaimer: All information contained therein is gathered from relevant third parties sources. We cannot guarantee or give any warranty about the information provided. Interested parties must rely solely on their own enquiries.

LJ Hooker Palm Beach
(02) 9974 5999

designed with family and friends in mind, featuring a custom bunk room, flexible lounge area, and additional bedroom, while the open-plan main floor is flooded with light, framing magnificent water views and capturing the soul of this unique home surrounded by natural beauty.

Key Features:

- An entryway steeped in romance with a whitewashed stone staircase that meanders through tropical gardens and a private lawn perfect for sipping a cocktail while watching the spectacular sunset.
- A two-level layout infused with original features and charm, including leadlight windows and doors, exposed beams, and vintage detailing.
- In the kitchen, stainless steel benchtops, a central island, and walk-in pantry honour the timeless aesthetic.
- Expansive deck with built-in seating, a pizza oven, and firepit offering the ultimate setup for entertaining with a view.
- Three charming bedrooms on the main floor, all offering water views.
- Custom-designed bunk room, bedroom, and lounge downstairs-a perfect retreat for kids.
- Gas fireplace, clawfoot bathtub, painted timber floors, large attic storage, a double carport.



More About this Property

Property ID	BENF6Z
Property Type	House
Land Area	715 m2

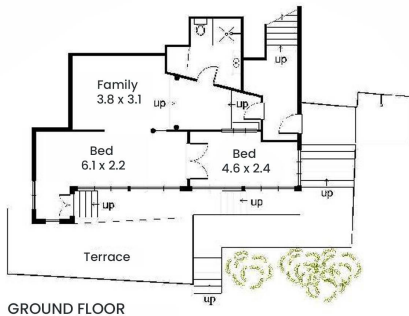
Peter Robinson 0401 219 077
Principal “ Peter Robinson Real Estate Pty Ltd CLN 10121506 |
peter.robinson@ljhooker.com.au
Greer Bradbury 0490 429 142
Sales Associate | GBradbury@ljhpb.com.au

LJ Hooker Palm Beach (02) 9974 5999
1073 Barrenjoey Road, PALM BEACH NSW 2108
palmbeach.ljhooker.com.au | office@ljhpb.com.au

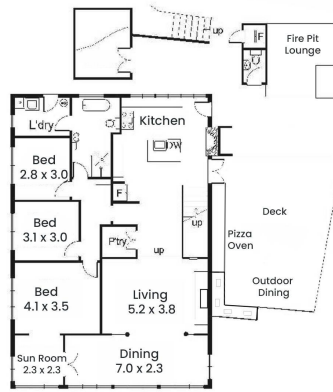


Disclaimer: All information contained therein is gathered from relevant third parties sources. We cannot guarantee or give any warranty about the information provided. Interested parties must rely solely on their own enquiries.

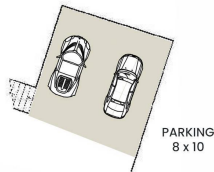
LJ Hooker Palm Beach
(02) 9974 5999



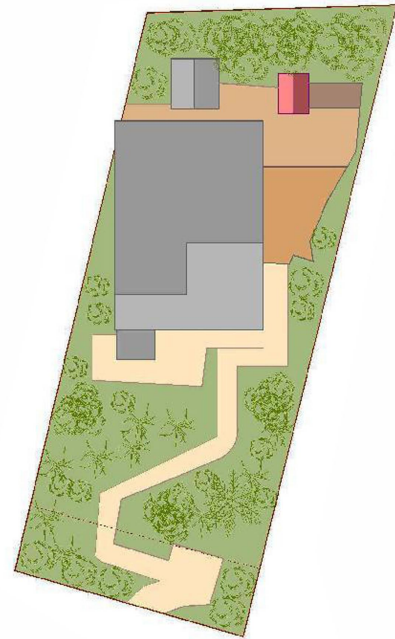
GROUND FLOOR



FIRST FLOOR



PARKING
8 x 10



SITE PLAN

Dimensions are approximate.
All information contained is gathered from sources we believe to be reliable.
However we cannot guarantee its accuracy and interested persons should rely on their own enquiries.



LJ Hooker Palm Beach
(02) 9974 5999

Disclaimer: All information contained therein is gathered from relevant third parties sources.
We cannot guarantee or give any warranty about the information provided. Interested parties must rely solely on their own enquiries.