



## Palm Beach, 69 Florida Road

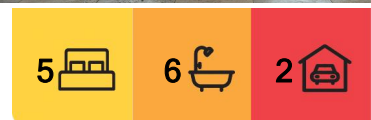
Unrivalled Palm Beach Views, Sensational Privacy, Due North Aspect and Substantial Family Residence

"Salt Palm Beach" This extraordinary residence delivers unrivalled north views across the entire sweep of Palm Beach, from the rockpool to the lighthouse; architecturally designed to fully embrace the position and aspect, every room in the house shares in those spectacular vistas. The grand, two-storey layout boasts a fabulous, free-flowing design; the main lounge is crowned by a gorgeous sandstone fireplace and anchored by an entertainer's kitchen with integrated appliances. The sound of breaking waves combines with all day sunshine to create an effortless, indoor/outdoor lifestyle with its enormous, ocean-facing terrace and five ensuite bedrooms —it's really the perfect Palm Beach getaway with iconic views, beach just steps from the door and an exclusive Florida Road address.

- Architecturally designed with a focus on relaxed holidays for family + guests
- Spectacular views from every room across beach, lighthouse and rockpool



**Disclaimer:** All information contained therein is gathered from relevant third parties sources. We cannot guarantee or give any warranty about the information provided. Interested parties must rely solely on their own enquiries.



**For Sale**  
Contact Agent

**View**  
By Appointment

**Contact**  
**Peter Robinson**  
0401 219 077  
peter.robinson@ljhooker.com.au  
**Dennis Kennelly**  
0477 977 971  
dennis.kennelly@ljhooker.com.au

**LJ Hooker Palm Beach**  
**(02) 9974 5999**

- Dual level, open layout design delivers a beautifully balanced floorplan
- Well protected from harsh weather; no other neighbours at this level
- Huge entertaining terrace with both sheltered and alfresco areas
- Five ensuite bedrooms, including two master suites at either end
- Elegant kitchen designed for entertaining with two prep areas, integrated fridges and Miele gas cooktop
- Two wood fireplaces, hardwood floors, ducted air with heating and cooling for the entire house, plantation shutters
- Double lock-up garage then pathway or inclinor access up to the house
- Approximately 300m stroll to the golden sands of the iconic Palm Beach, yet sensational privacy at the home

## More About this Property

Property ID	B3VF6Z
Property Type	House
Land Area	1144 m2
Including	Fire Place Ocean Views Water Views

**Peter Robinson 0401 219 077**  
Principal “ Peter Robinson Real Estate Pty Ltd CLN 10121506 |  
peter.robinson@ljhooker.com.au  
**Dennis Kennelly 0477 977 971**  
Licensed Real Estate Agent | Residential and Commercial |  
dennis.kennelly@ljhooker.com.au

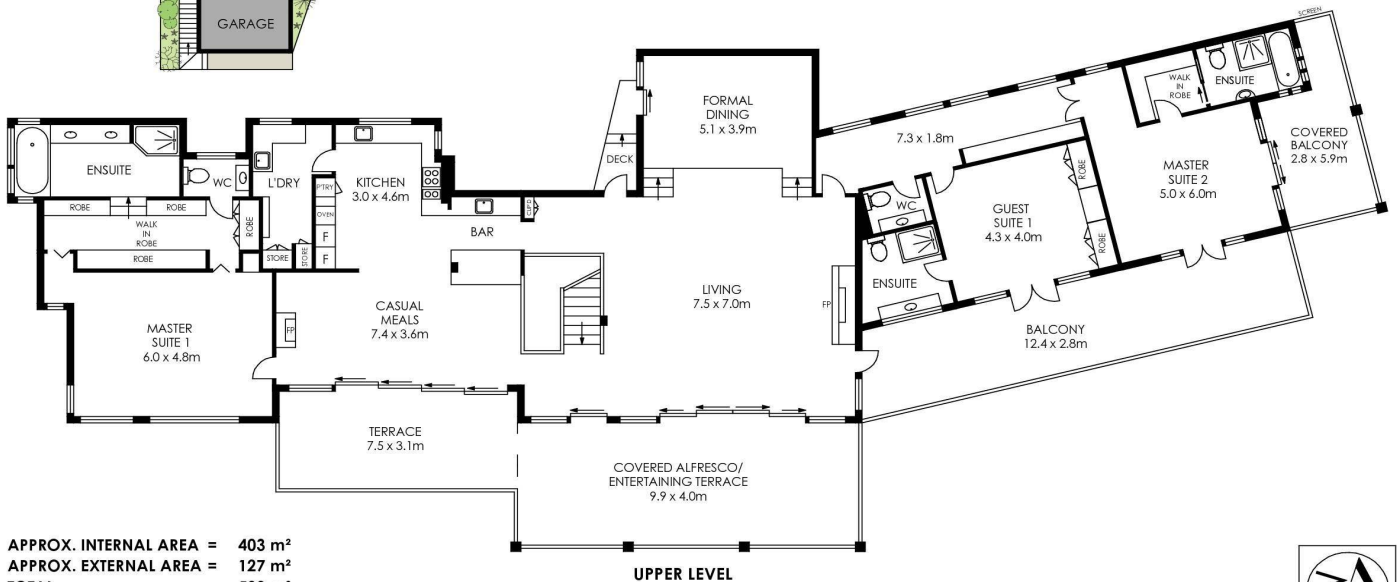
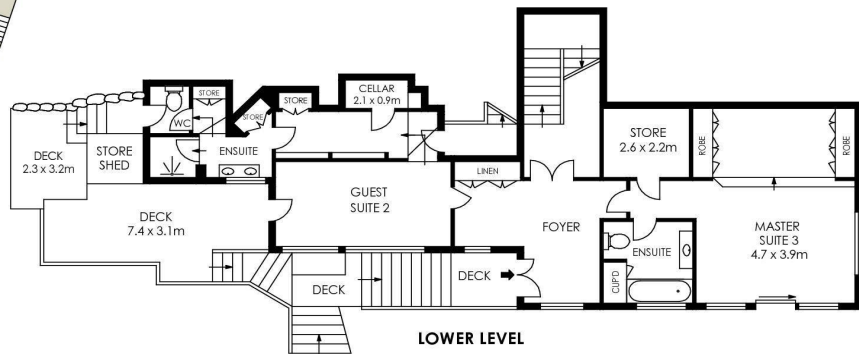
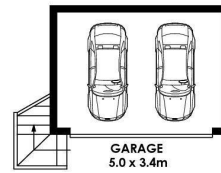
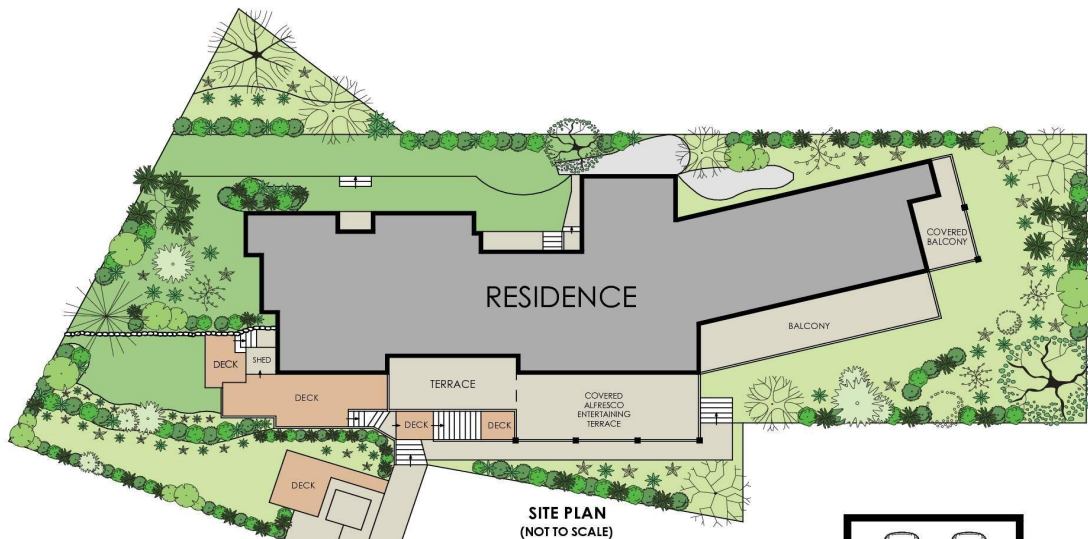
**LJ Hooker Palm Beach (02) 9974 5999**  
1073 Barrenjoey Road, PALM BEACH NSW 2108  
palmbeach.ljhooker.com.au | office@ljhpb.com.au



**Disclaimer:** All information contained therein is gathered from relevant third parties sources. We cannot guarantee or give any warranty about the information provided. Interested parties must rely solely on their own enquiries.

**LJ Hooker Palm Beach**  
**(02) 9974 5999**





APPROX. INTERNAL AREA = 403 m<sup>2</sup>  
 APPROX. EXTERNAL AREA = 127 m<sup>2</sup>  
 TOTAL = 530 m<sup>2</sup>  
 LAND SIZE = 1,144 m<sup>2</sup>

PLANS SHOWN ONLY INDICATIVE OF LAYOUT. DIMENSIONS ARE APPROXIMATE.



69 Florida Road, Palm Beach

 LJ Hooker

 LJ Hooker

LJ Hooker Palm Beach  
 (02) 9974 5999

**Disclaimer:** All information contained therein is gathered from relevant third parties sources.  
 We cannot guarantee or give any warranty about the information provided. Interested parties must rely solely on their own enquiries.