



Palm Beach, 68 Bynya Road

"Bibury" Timeless Elegance

Nestled within a spectacular garden setting, the graceful architecture of 'Bibury' conveys its lineage and history with a perfect balance of symmetry and elegance. The original lustre has been skillfully updated and restored, showcasing the classic rooflines and grandeur of its entryway and interiors; high corniced ceilings, gleaming hardwood floors and French windows mark this as a home of rare distinction and craftsmanship.

Built as a substantial weekender in the 1950s, the splendid lines of the home cascade over three levels with a generous layout and richly textured interiors; the main lounge feels grand yet intimate with its wood-burning fireplace and French doors merging with sunlit stone terraces.

A family room and custom-designed home office are also found on the main level, joined by a gorgeous, marble-topped island kitchen and adjacent dining area. Once again, French doors extend this part of the residence to sandstone terraces, glorious rear



For Sale
\$3,950,000

View
ljhooker.com.au/BDTF6Z

Contact
Peter Robinson
0401 219 077
peter.robinson@ljhooker.com.au

Greer Bradbury
0490 429 142
GBradbury@ljhpb.com.au



LJ Hooker Palm Beach
(02) 9974 5999

Disclaimer: All information contained therein is gathered from relevant third parties sources. We cannot guarantee or give any warranty about the information provided. Interested parties must rely solely on their own enquiries.

gardens plus a natural rock swimming pool and waterfall. The bright, comfortable bedrooms all include wardrobes and both the master and guest bedrooms are ensuites.

It's just the way you'd imagine the perfect holiday home would look and feel —light and airy with classic lines setting the overall tone, while the well-integrated updates capture the essence of casual refinement in the heart of Palm Beach.

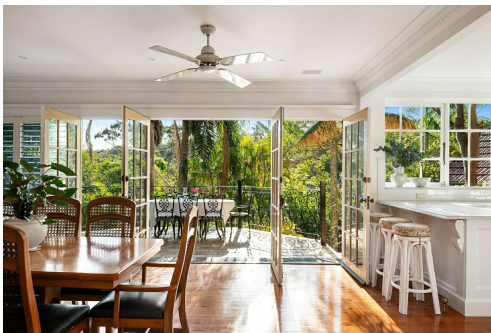
- Elegant and timeless; classic architectural design, double brick
- Beautiful main lounge with French doors to gardens + terraces
- Separate family room, custom-designed home office/study
- Open plan kitchen; benchtops finished with imported marble
- Sandstone alfresco terrace, level lawns and mature fruit trees
- Natural rock swimming pool joins with a captivating waterfall
- Spacious bedrooms finished with plantation shutters + built-ins
- Two master suites, air con, hardwood floors, wood fireplace
- Level street entry, circular driveway, double lock-up garage
- Sensational Palm Beach setting; just a short stroll from Jonah's

More About this Property

Property ID	BDTF6Z
Property Type	House
Land Area	910 m²

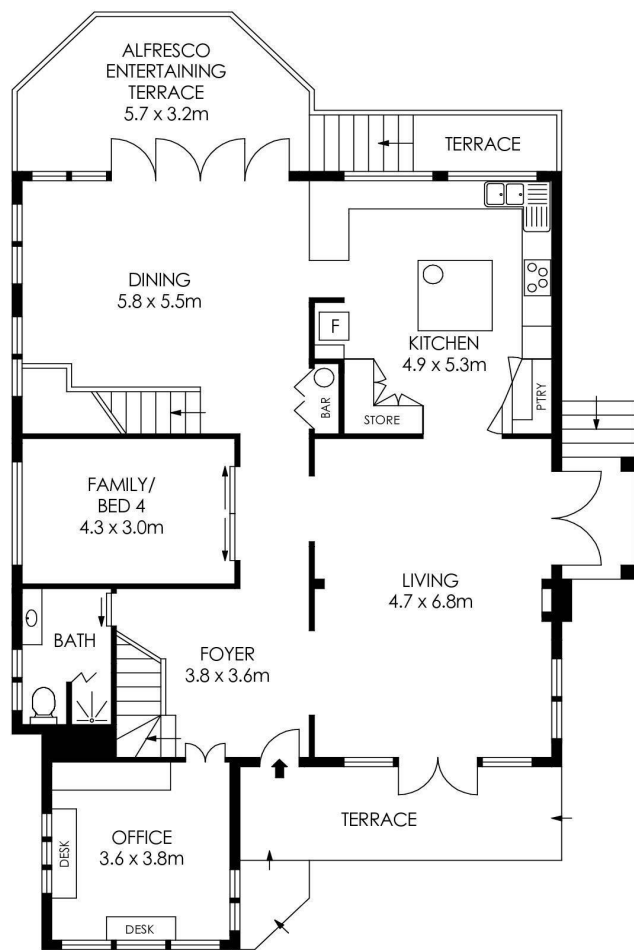
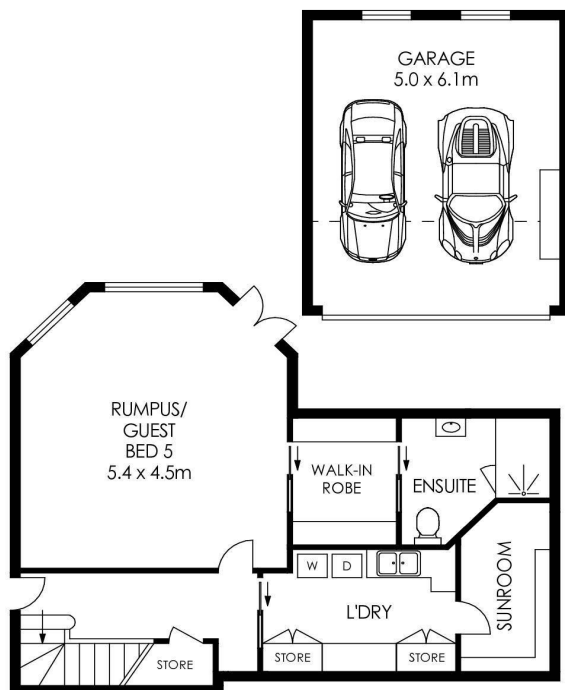
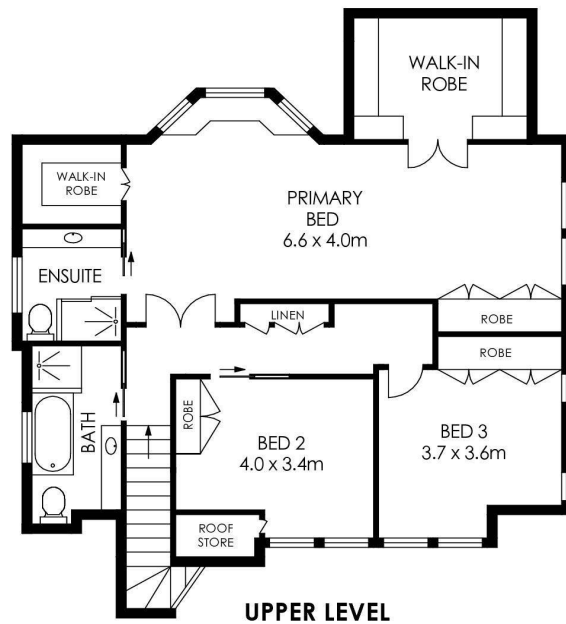
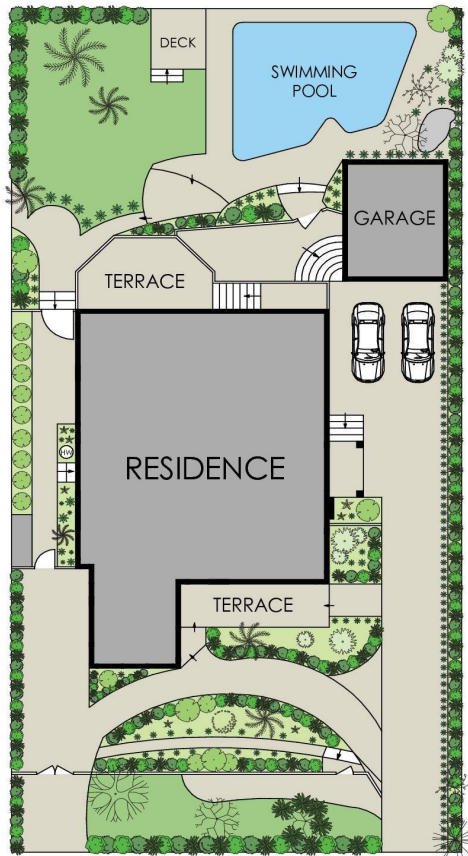
Peter Robinson 0401 219 077
Principal “ Peter Robinson Real Estate Pty Ltd CLN 10121506 |
peter.robinson@ljhooker.com.au
Greer Bradbury 0490 429 142
Sales Associate | GBradbury@ljhpb.com.au

LJ Hooker Palm Beach (02) 9974 5999
1073 Barrenjoey Road, PALM BEACH NSW 2108
palmbeach.ljhooker.com.au | office@ljhpb.com.au



Disclaimer: All information contained therein is gathered from relevant third parties sources. We cannot guarantee or give any warranty about the information provided. Interested parties must rely solely on their own enquiries.

LJ Hooker Palm Beach
(02) 9974 5999



APPROX. INTERNAL AREA	=	321 m ²
APPROX. EXTERNAL AREA	=	30 m ²
TOTAL	=	351 m ²
LAND SIZE	=	768 m ²



68 Bynya Road, Palm Beach



Disclaimer: All information contained therein is gathered from relevant third parties sources. We cannot guarantee or give any warranty about the information provided. Interested parties must rely solely on their own enquiries.