



42 Iluka Road, Palm Beach

Iluka Road Beachfront

Some views simply never lose their allure, and the calm, glassy waters of Pittwater framed by the swaying gumtrees of Ku-ring-gai Chase National Park is one of them. And from this beautifully positioned waterfront residence, that breathtaking outlook becomes part of everyday life.

Located on a tightly held Palm Beach street along the picturesque shores of Sandy Beach, a spot loved by locals for its golden sunsets and kid-friendly vibe, this home captures uninterrupted vistas across Pittwater and Ku-ring-gai Chase National Park. Expansive windows flood the living areas with natural light and invite in the gentle coastal breeze, so you feel relaxed the moment you step inside.

Indoor and outdoor living merge seamlessly here. With a leafy courtyard, level front lawn and the boat ramp just next door, it's easy to imagine endless summer days on the water, followed by slow afternoons unwinding at home in the shade.

Originally designed as a holiday retreat, the home's generous layout, including multiple bedrooms and a downstairs kitchenette ideal for a separate living zone, offers flexibility for a range of lifestyles. Keep it as the ultimate family getaway, leverage it as an investment, or transform it into your dream permanent waterfront residence.

7 4 2

FOR SALE
Contact Agent

VIEW
By Appointment

AGENTS
David Edwards
0415 440 044
dedwards@ljhpb.com.au

BJ Edwards
0420 304 140
bjedwards@ljhpb.com.au

AGENCY
LJ Hooker Palm Beach
(02) 9974 5999

All information contained therein is gathered from relevant third parties sources.
We cannot guarantee or give any warranty about the information provided.
Interested parties must rely solely on their own enquiries.

LJ Hooker

Key Features:

- Two-level absolute beachfront home in a tightly held Sandy Beach location
- Light-filled interiors with charming retro details, including feature tiles and herringbone flooring
- Seven bedrooms with built-in wardrobes, including a main suite with walk-in robe and ensuite
- Large kitchen with Pittwater views, equipped with an electric oven/stovetop, double sink, and beautiful tiled splashback
- Covered front patio with water views, plus a rear balcony overlooking the courtyard with a BBQ area and vine-covered pergola —perfect for shaded alfresco dining
- Internal laundry
- Abundant storage throughout
- Single lock-up garage, garage/storage space with room for a car or boat, plus additional driveway and off-street parking
- Moments from Palm Beach amenities, including surf beaches, cafes, Club Palm Beach, restaurants, bus routes, and ferry services

MORE DETAILS

Property ID	BT9F6Z
Property Type	House
Land Area	531.1 m2
Including	Beach Front
	Close to Shops
	Close to Transport
	Kitchenette
	Water Front
	Water Views

David Edwards 0415 440 044

Director | Licensee | David Edwards Palm Beach Realty Pty Ltd CLN 348342 | dedwards@ljhpb.com.au

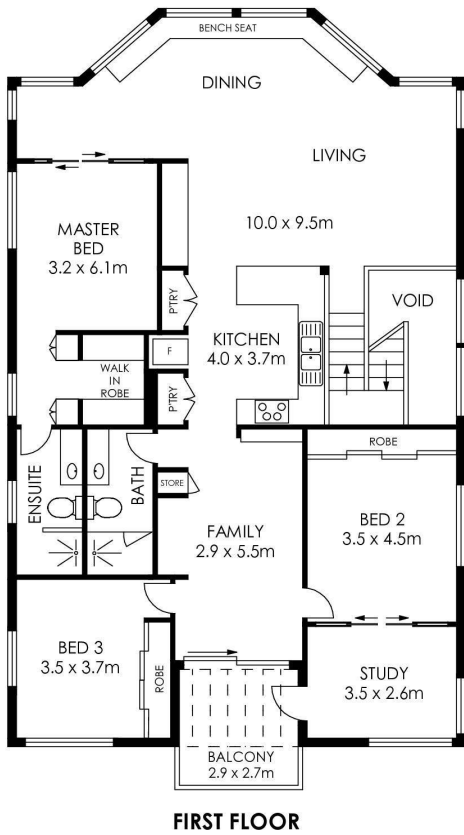
BJ Edwards 0420 304 140

Licensed Real Estate Agent | bjedwards@ljhpb.com.au

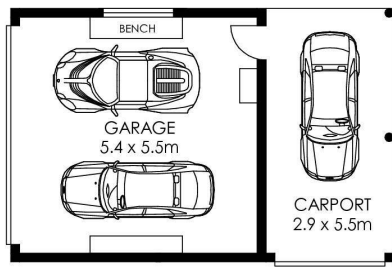
LJ Hooker Palm Beach (02) 9974 5999

1073 Barrenjoey Road, PALM BEACH NSW 2108
palmbeach.ljhooker.com.au | office@ljhpb.com.au

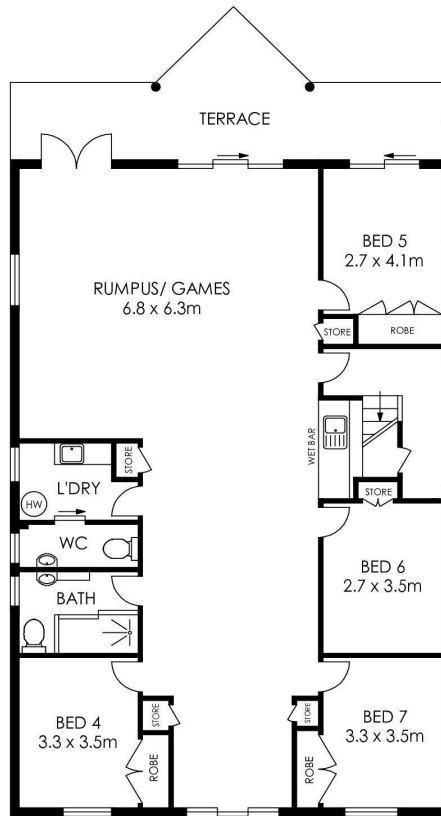




FIRST FLOOR



GROUND FLOOR



GROUND FLOOR



SITE PLAN
(NOT TO SCALE)

APPROX. INTERNAL AREA = 298 m²
 APPROX. EXTERNAL AREA = 58 m²
 TOTAL = 356 m²
 LAND SIZE = 531.1 m²

PLANS SHOWN ONLY INDICATIVE OF LAYOUT. DIMENSIONS ARE APPROXIMATE.



42 Iluka Road, Palm Beach



All information contained therein is gathered from relevant third parties sources.
 We cannot guarantee or give any warranty about the information provided.
 Interested parties must rely solely on their own enquiries.

