
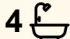
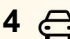




294 Whale Beach Road, Palm Beach

4  4  4 

## Beautiful Beach House with Wide Ocean Views and Sundrenched Northerly Aspect

**FOR SALE**

For Sale

**VIEW**

Sat 13th Jun @ 10:30AM - 11:00AM

**AGENTS**

Peter Robinson

0401 219 077

[peter.robinson@ljhooker.com.au](mailto:peter.robinson@ljhooker.com.au)

Angus Abrahams

0488 007 236

[angus.abrahams@ljhooker.com.au](mailto:angus.abrahams@ljhooker.com.au)

**AGENCY**

LJ Hooker Palm Beach

(02) 9974 5999

Featuring sweeping ocean views over Palm Beach and across to Cape Three Points, light-filled home offers the very best of beachside living. Approaching the residence, you're met with a striking sandstone facade and staircase, complemented by pristine gardens that cascade over a natural rockface. Beyond the impressive landscaping, the four-bedroom home boasts a prized northeast aspect and a thoughtfully designed floor plan. Designed over three levels, the ground floor houses a garage and storage space. The upper floor features an expansive open-plan living, kitchen and dining area, while the lower level accommodates the bedrooms and bathrooms - providing functionality and privacy.

Inside, bright interiors feature wide oak timber flooring, white timber wall panelling, and a soft, neutral palette that complements the surrounding coastal environment. The open-plan living, dining, and kitchen area boasts soaring raked ceilings featuring a cluster of skylights that flood the space with natural light and offer views of swaying palm trees as you relax on the lounge. Meanwhile, floor-to-ceiling glass doors seamlessly blend indoor and outdoor living,

All information contained therein is gathered from relevant third parties sources. We cannot guarantee or give any warranty about the information provided. Interested parties must rely solely on their own enquiries.

 **LJ Hooker**

opening to an expansive ocean-facing deck, perfect for entertaining or simply soaking up the views.

The space is anchored by a sleek, contemporary kitchen with a large island bench, integrated appliances, and a stylish coastal-inspired blue tile splashback. The sun-drenched lounge area extends to a leafy courtyard, where a winding path sprawls upwards along a garden oasis to an elevated terrace offering panoramic ocean views.

Cocconed in greenery and conveniently nestled between Whale Beach and Palm Beach, this refined residence delivers effortless beachside living, ideal for gatherings or simply enjoying a quiet moment gazing out over the horizon.

- Breathtaking ocean views overlooking Whale Beach and Cape Three Points
- Bright, light-filled interiors with oak timber floors, white wall panelling, open plan layout, soft tones, neutral palette
- Raked ceilings, skylights and expansive floor-to-ceiling glass doors flood the home with natural light
- Large deck provides the perfect year-round vantage point for taking in the panorama, ideal for entertaining and al fresco gatherings
- Peaceful private rear courtyard leads to a hidden garden sanctuary and a picturesque elevated terrace with ocean views
- Spacious, modern kitchen with marble benchtops, integrated fridge and dishwasher, stainless steel sink, dual ovens, gas stove
- Four generous bedrooms, three with ocean views, two with en-suites; all with built-in robes
- Ample storage throughout
- Four well-appointed bathrooms with waterfall showers
- Gas fireplace, ducted heating and cooling, upstairs ceiling fan
- Double lock-up garage with storage, additional bathroom, laundry, and kitchenette
- Additional parking for two cars on driveway, off-street parking available
- Prime location close to Palm Beach, Whale Beach, cafes, restaurants, and all that the Northern Beaches has to offer

## MORE DETAILS

Property ID	BPKF6Z
Property Type	House
Land Area	771.4 m2

### Peter Robinson 0401 219 077

Principal "Peter Robinson Real Estate Pty Ltd CLN 10121506 | peter.robinson@ljhooker.com.au

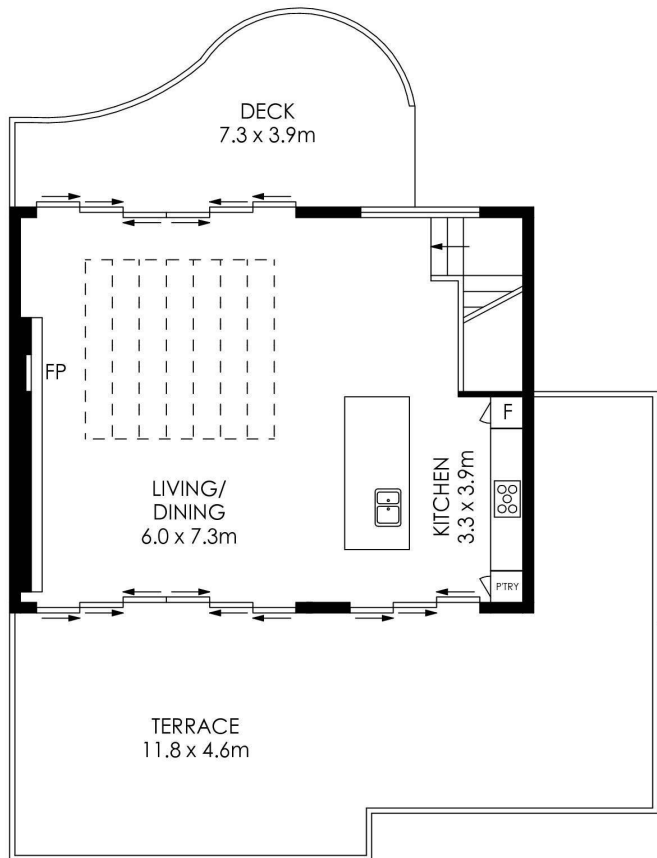
### Angus Abrahams 0488 007 236

Licensed Real Estate Agent | angus.abrahams@ljhooker.com.au

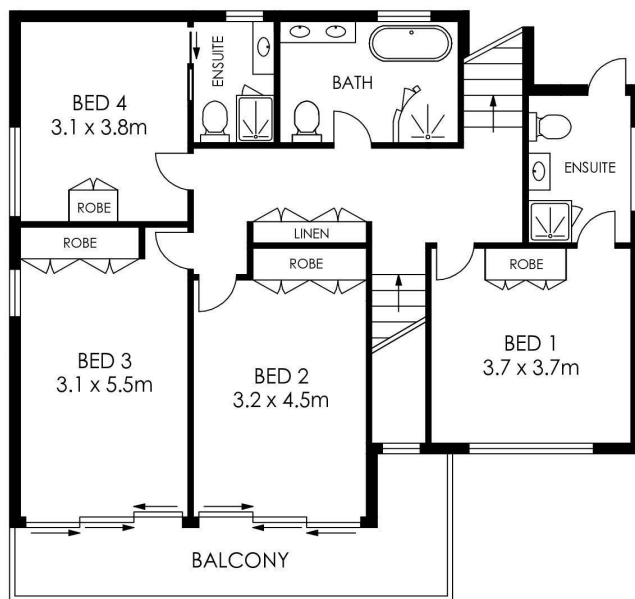
### LJ Hooker Palm Beach (02) 9974 5999

1073 Barrenjoey Road, PALM BEACH NSW 2108  
palmbeach.ljhooker.com.au | office@ljhpb.com.au

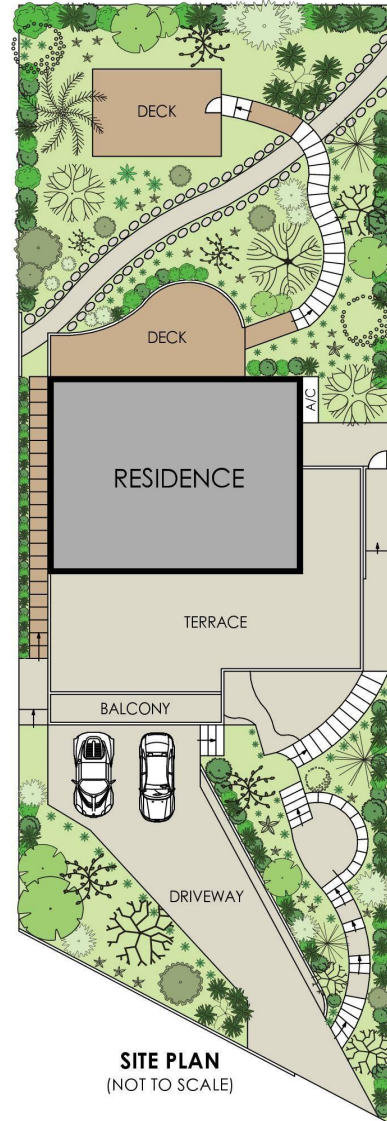




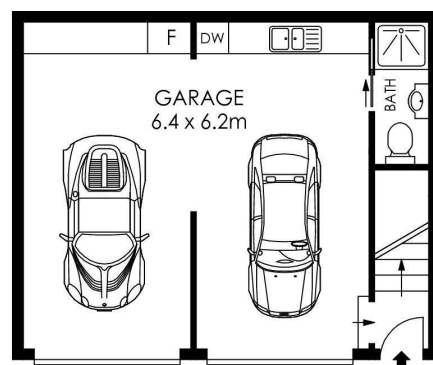
UPPER LEVEL



LEVEL ONE



SITE PLAN  
(NOT TO SCALE)



ENTRY LEVEL

APPROX. INTERNAL AREA = 211 m<sup>2</sup>  
 APPROX. EXTERNAL AREA = 90 m<sup>2</sup>  
 TOTAL = 301 m<sup>2</sup>  
 LAND SIZE = 771.4 m<sup>2</sup>

PLANS SHOWN ONLY INDICATIVE OF LAYOUT. DIMENSIONS ARE APPROXIMATE.



294 Whale Beach Road, Palm Beach

LJ Hooker

All information contained therein is gathered from relevant third parties sources.  
 We cannot guarantee or give any warranty about the information provided.  
 Interested parties must rely solely on their own enquiries.

LJ Hooker