



28 Pacific Road, Palm Beach

Alaia Palm Beach — A Visionary Coastal Masterpiece

Alaia Palm Beach is a seamless fusion of contemporary beach elegance and sustainable design, meticulously crafted to maximize its premium north-facing position. Cascading down a sun-drenched site, its panoramic outlook stretches from Pittwater to the iconic Barrenjoey Lighthouse and beyond to Cape Three Points and the vast Pacific horizon. As one of Sydney's most exceptional luxury lifestyle escapes, this architectural masterpiece embodies both sophistication and tranquility.

Located on Pacific Road—one of Palm Beach's most prestigious and tightly held addresses—this residence enjoys a largely wind-protected microclimate, creating an endless summer ambiance. The golden sands of Palm Beach, Palm Beach Rock Pool and the sparkling ocean are just 480 metres away via public walking tracks - an easy stroll that keeps you connected to the coastline, yet blissfully removed from the hustle and bustle of the summer crowds. The perfect combination of privacy and proximity.

Private and secure, an internal lift servicing all levels, the tri-level home blends cutting-edge luxury with the natural beauty of its surroundings.

6 5 5

FOR SALE
Contact Agent

VIEW
By Appointment

AGENTS
Peter Robinson
0401 219 077
peter.robinson@ljhooker.com.au

Dennis Kennelly
0477 977 971
dennis.kennelly@ljhpb.com.au

AGENCY
LJ Hooker Palm Beach
(02) 9974 5999

All information contained therein is gathered from relevant third parties sources.
We cannot guarantee or give any warranty about the information provided.
Interested parties must rely solely on their own enquiries.

LJ Hooker

Inspired by Nature, Designed for Luxury

Minimalist lines, resort-inspired tones, and a thoughtfully curated selection of sustainable materials create a refined yet relaxed aesthetic. The interior palette draws from the surrounding coastal landscape, incorporating sandstone hues, bronze metallic accents, and oceanic blues. Exquisite details such as imported French travertino plaster, sculptural marble elements, travertine paving, and hand-blown glass feature lighting are seamlessly paired with Italian bronze cabinetry-designed to patina gracefully in the salt air.

Alaia's expansive design includes:

- **Luxury Accommodations:** Two primary bedrooms with ensuites and sweeping ocean views, plus two garden bedrooms spilling onto nearly 200 square meters of level lawn-perfect for family recreation. A separate-access, self-contained two-bedroom guest house offers added privacy.
- **Seamless Open-Plan Living:** Vast sliding doors frame breathtaking vistas, while a Jetmaster fireplace enhances the inviting atmosphere. The Italian stone chef's kitchen, featuring an island bar, integrated fridges and dishwashers, and a butler's pantry, is designed for effortless entertaining.
- **Resort-Style Outdoor Living:** A dedicated poolside entertainment quarter with a bar, bathroom, and kitchenette opens onto level lawns, while a heated wet-edge pool is complemented by an outdoor hot/cold shower.
- **Wellness & Recreation:** A media room, home theatre, gym, and a private wellness floor equipped with an infrared sauna and cold plunge bath provide the ultimate relaxation experience.
- **Indulgent Parent's Retreat:** Complete with a walk-in robe and a beautifully appointed ensuite offering panoramic ocean views.
- **State-of-the-Art Features:** Designer bathrooms, sky-roofs and skylights, electronic blinds, ducted air conditioning, and a secure three-car garage with ample recreational storage.

Set amid exquisitely landscaped gardens, native palms, grasses, and lush plantings provide a soothing contrast to the home's clean architectural lines. Thoughtfully designed terraces connect seamlessly to each main living area, grounding the home in nature while commanding breathtaking ocean vistas.

Just a short stroll via nearby pathways to Palm Beach and Whale Beach, Alaia Palm Beach is a sanctuary of serenity, where innovative luxury and natural beauty unite in perfect harmony.

Welcome to Alaia Palm Beach-an unparalleled expression of coastal living.

MORE DETAILS

Property ID	BPNF6Z
Property Type	House
Land Area	904 m2

Peter Robinson 0401 219 077

Principal " Peter Robinson Real Estate Pty Ltd CLN 10121506 | peter.robinson@ljhooker.com.au

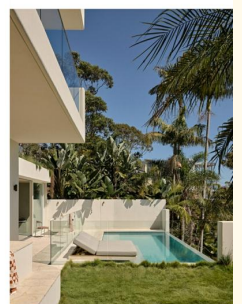
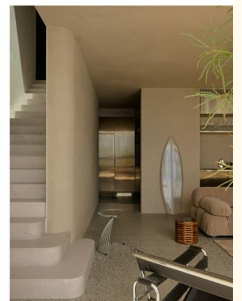
Dennis Kennelly 0477 977 971

Licensed Real Estate Agent | Residential and Commercial | dennis.kennelly@ljhpb.com.au

LJ Hooker Palm Beach (02) 9974 5999

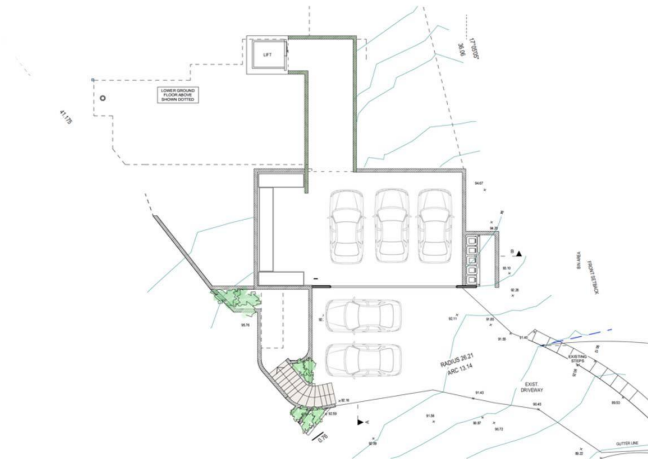
1073 Barrenjoey Road, PALM BEACH NSW 2108
palmbeach.ljhooker.com.au | office@ljhpb.com.au

All information contained therein is gathered from relevant third parties sources.
We cannot guarantee or give any warranty about the information provided.
Interested parties must rely solely on their own enquiries.

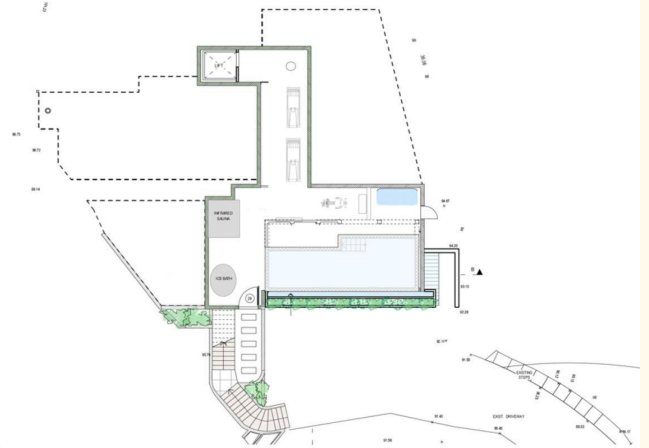


ALAÏA

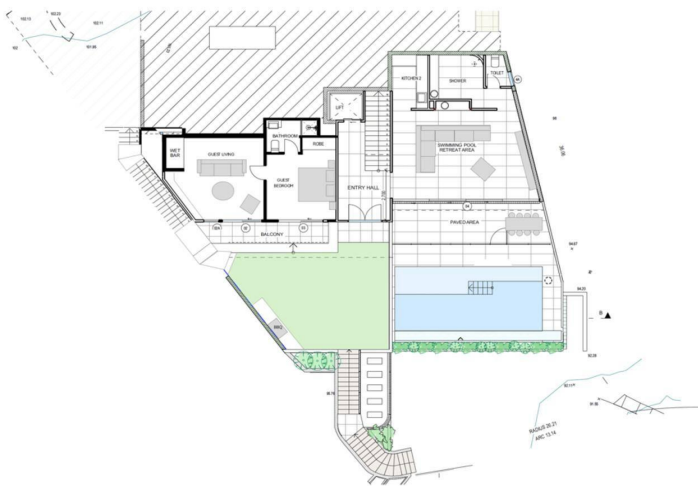
28 PACIFIC ROAD, PALM BEACH FLOOR PLAN



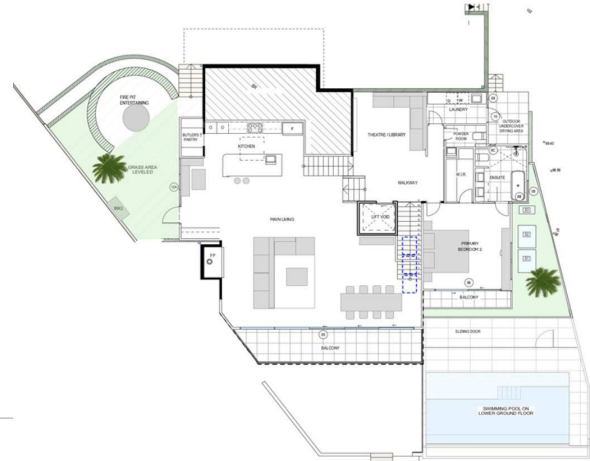
BASEMENT LEVEL: GARAGE + RECREATION



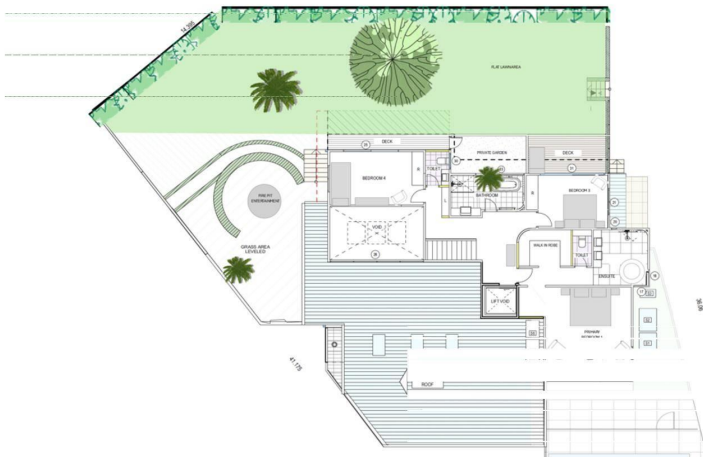
LG WELLNESS LEVEL: GYM, SAUNA, ICE BATH



GROUND LEVEL: MAIN ENTRY, POOL, BBQ, POOL RETREAT AND SELF CONTAINED GUEST QUARTERS.



LEVEL 1: MAIN LIVING, DINING, KITCHEN, FIRE PIT ENTERTAINMENT, BACK YARD ACCESS, THEATRE, LAUNDRY, PRIMARY BEDROOM 2.



LEVEL 2: PRIMARY BEDROOM 1, BEDROOM 3 & 4, FAMILY BATHROOM.

All information contained therein is gathered from relevant third parties sources.
We cannot guarantee or give any warranty about the information provided.
Interested parties must rely solely on their own enquiries.