



Palm Beach, 24 Palm Beach Road

Expansive Family Home with Ocean Views —Walk to the Beach

'Maravista' - Perfectly positioned just moments from the golden sands of Palm Beach, this substantial two-storey residence offers the ultimate coastal lifestyle.

Capturing sweeping ocean views and boasting an enviable layout ideal for relaxed family living and entertaining, this is a rare opportunity to secure a spacious home in an unbeatable setting.

Property Features:

- Elevated position with stunning ocean vistas
- Generous open plan living and dining with ambient stone fireplace, flowing onto a vast entertaining terrace



Disclaimer: All information contained therein is gathered from relevant third parties sources. We cannot guarantee or give any warranty about the information provided. Interested parties must rely solely on their own enquiries.

4

4

2

Auction

Tue 1st Jul @ 6:00PM

View

Sat 7th Jun @ 12:00PM - 12:30PM

Contact

David Edwards

0415 440 044

david.edwards@ljhooker.com.au

Peter Robinson

0401 219 077

peter.robinson@ljhooker.com.au

LJ Hooker Palm Beach
(02) 9974 5999

- Well-appointed gas kitchen with excellent storage and bench space
 - A second living/lounge/media room, offering a flexible retreat for families or entertaining, and opening to a private terrace
 - Four oversized bedrooms upstairs, all with ensuite access
 - Master suite features a walk-in robe and ensuite bathroom
 - Double carport plus additional off-street parking
 - Expansive backyard —ideal for kids, pets, or future landscaping opportunities
- With space, views, and proximity to the beach, this home is ready to enjoy as-is or presents incredible potential to further capitalise in a premium Palm Beach address.

More About this Property

Property ID	BN0F6Z
Property Type	House

David Edwards 0415 440 044

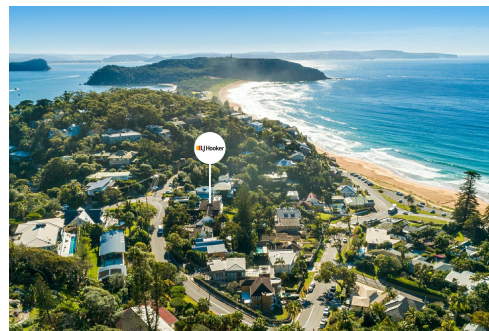
Director | Licensee | David Edwards Palm Beach Realty Pty Ltd CLN 348342 | david.edwards@ljhooker.com.au

Peter Robinson 0401 219 077

Principal | Peter Robinson Real Estate Pty Ltd CLN 10121506 | peter.robinson@ljhooker.com.au

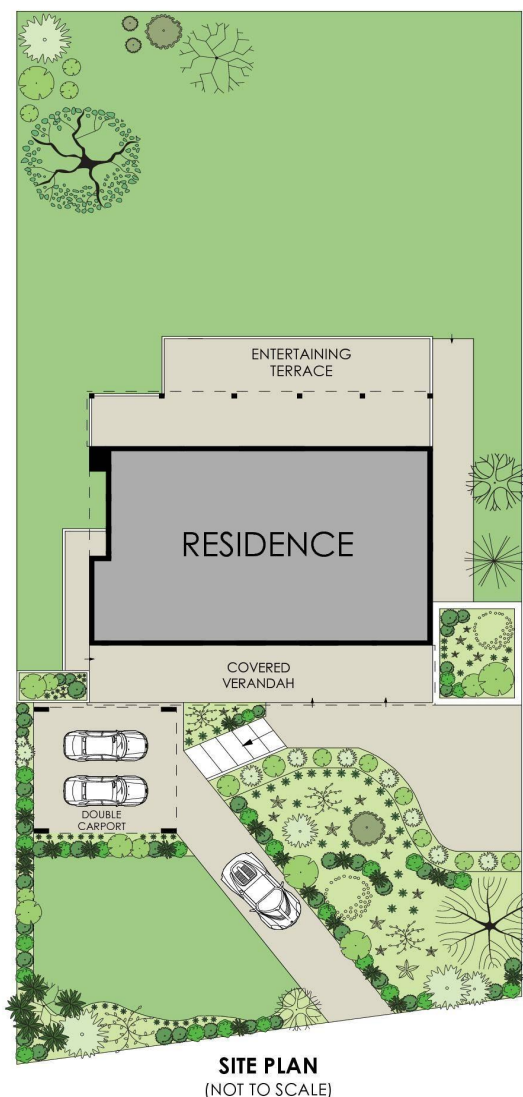
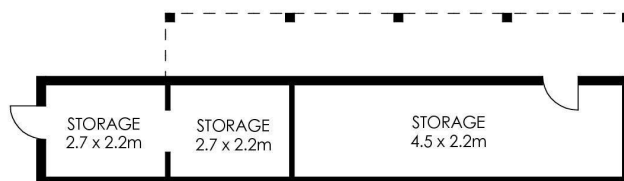
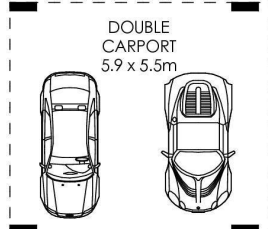
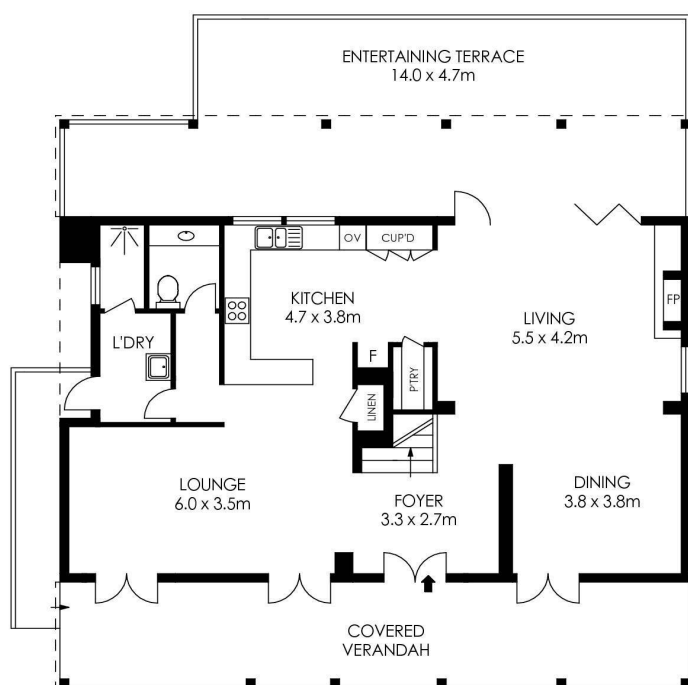
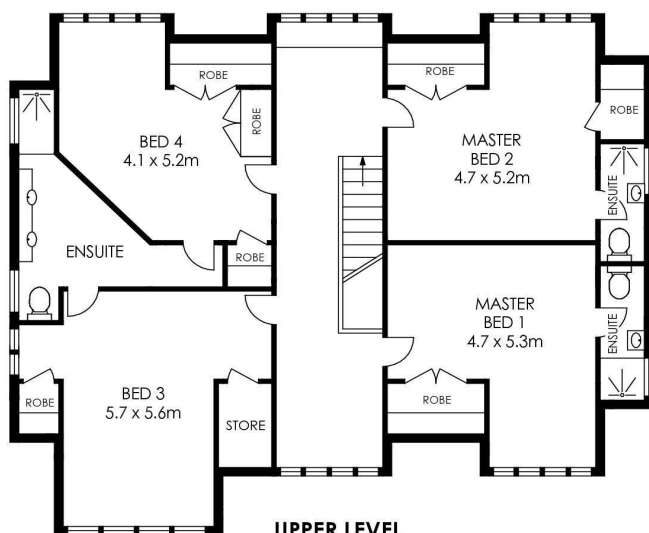
LJ Hooker Palm Beach (02) 9974 5999

1073 Barrenjoey Road, PALM BEACH NSW 2108
palmbeach.ljhooker.com.au | office@ljhpb.com.au



Disclaimer: All information contained therein is gathered from relevant third parties sources. We cannot guarantee or give any warranty about the information provided. Interested parties must rely solely on their own enquiries.

LJ Hooker Palm Beach
(02) 9974 5999



APPROX. INTERNAL AREA = 285 m²
 APPROX. EXTERNAL AREA = 116 m²
 TOTAL = 401 m²
 LAND SIZE = 727.2 m²

PLANS SHOWN ONLY INDICATIVE OF LAYOUT. DIMENSIONS ARE APPROXIMATE.



24 Palm Beach Road, Palm Beach

LJ Hooker

LJ Hooker

LJ Hooker Palm Beach
 (02) 9974 5999

Disclaimer: All information contained therein is gathered from relevant third parties sources.
 We cannot guarantee or give any warranty about the information provided. Interested parties must rely solely on their own enquiries.