



Palm Beach, 20 Palm Beach Road

'La Serenita' -Architectural Masterpiece with Stunning Ocean Views

Welcome to 'La Serenita,' a haven of tranquility and luxury with breathtaking views of Palm Beach. This stunning residence, designed by architect Michael Robilliard and featuring gardens by Will Dangar, embodies a perfect blend of industrial design and coastal elegance across three meticulously crafted levels.

Upon entering through a custom copper front door, you're greeted by interiors that combine natural timber, steel, concrete, and expansive glass, all bathed in natural light through unique arched planes. The heart of the home is on the entry level, where indoor-outdoor living is seamless. A private garden terrace with a built-in barbeque and retractable roof offers an intimate space for gatherings, while an expansive terrace provides stunning ocean views.

The main living area features a gas fireplace, custom cabinetry, and retractable glass



Disclaimer: All information contained therein is gathered from relevant third parties sources. We cannot guarantee or give any warranty about the information provided. Interested parties must rely solely on their own enquiries.

6

5

2

For Sale
\$9,500,000

View
ljhooker.com.au/BD6F6Z

Contact
Peter Robinson
0401 219 077
peter.robinson@ljhooker.com.au

Greer Bradbury
0490 429 142
GBradbury@ljhpb.com.au

LJ Hooker Palm Beach
(02) 9974 5999

sliders that merge indoor and outdoor spaces. The sleek kitchen, a chef's dream, is equipped with double Miele appliances, a Sub-Zero fridge, and a wine fridge.

The upper level hosts a luxurious master suite with a private balcony offering panoramic ocean views. This retreat includes an opulent bathroom with imported glass tiles, a custom walk-in robe, and a beautifully appointed family bathroom.

On the lower level, three of the six bedrooms are accompanied by two stylish bathrooms, while a large teenage retreat provides a space for relaxation. The expansive second living room, featuring a gym, media area, wet bar, and striking industrial design, is perfect for leisure.

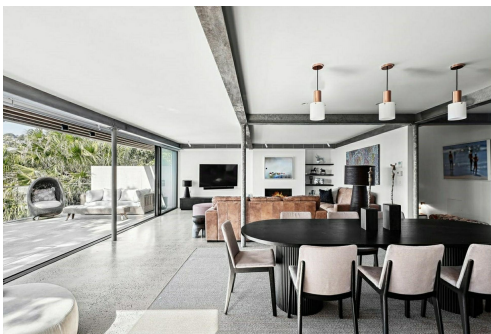
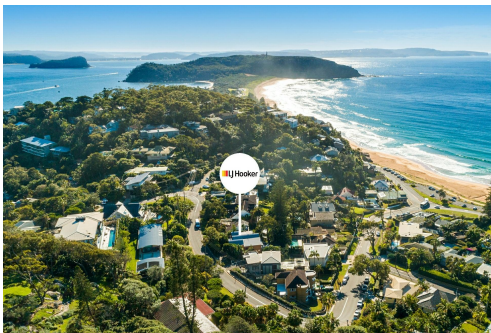
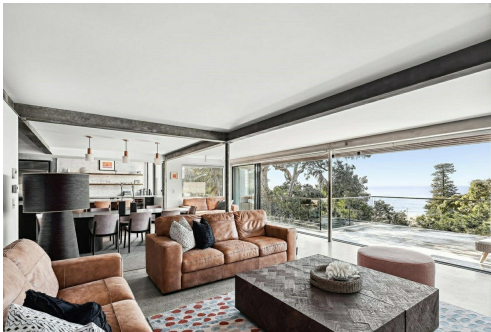
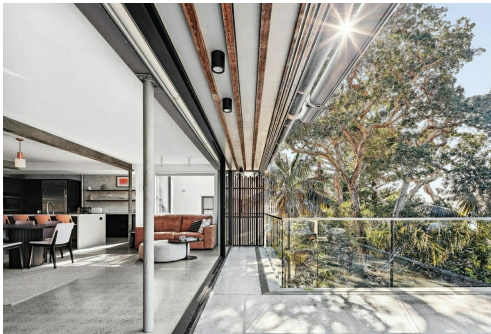
This sculpted masterpiece offers a flexible floorplan and is ideally located near Palm Beach, the Ocean Pool, Barrenjoey Lighthouse, Palm Beach Wharf, and a variety of gourmet restaurants and cafes. 'La Serenita' is a sanctuary where luxury meets coastal living.

More About this Property

Property ID	BD6F6Z
Property Type	House
Land Area	527 m²
Including	Fire Place Built-in-Robes Ocean Views

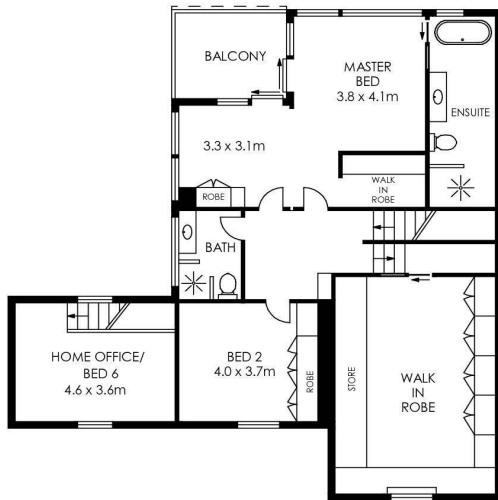
Peter Robinson 0401 219 077
Principal “ Peter Robinson Real Estate Pty Ltd CLN 10121506 |
peter.robinson@ljhooker.com.au
Greer Bradbury 0490 429 142
Sales Associate | GBradbury@ljhpb.com.au

LJ Hooker Palm Beach (02) 9974 5999
1073 Barrenjoey Road, PALM BEACH NSW 2108
palmbeach.ljhooker.com.au | office@ljhpb.com.au

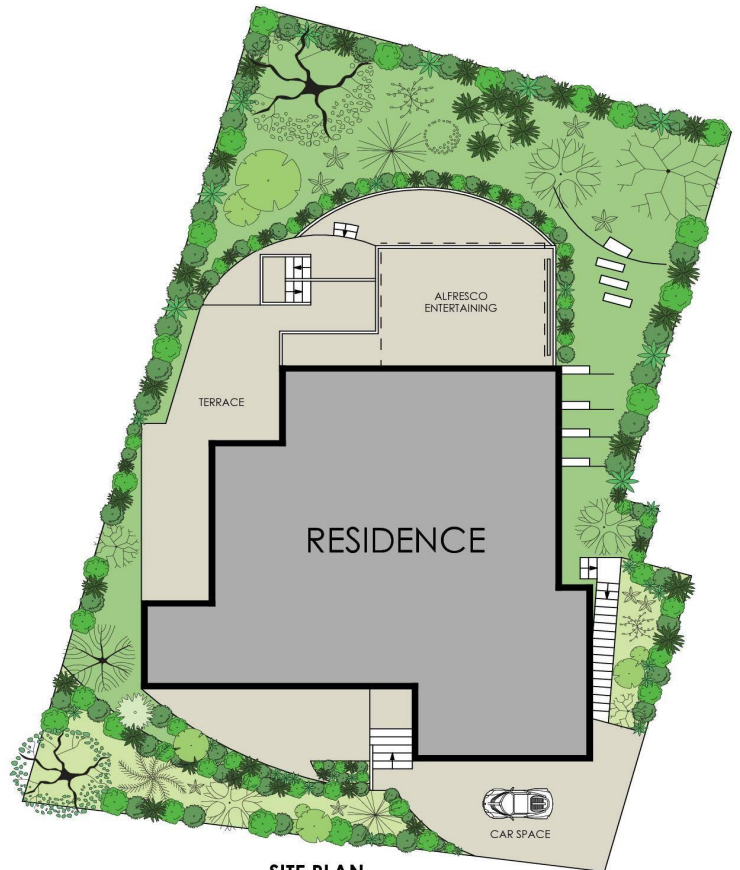


Disclaimer: All information contained therein is gathered from relevant third parties sources. We cannot guarantee or give any warranty about the information provided. Interested parties must rely solely on their own enquiries.

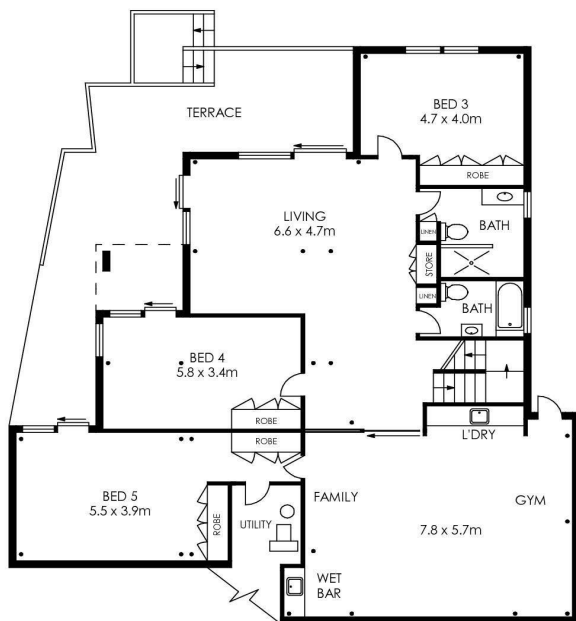
LJ Hooker Palm Beach
(02) 9974 5999



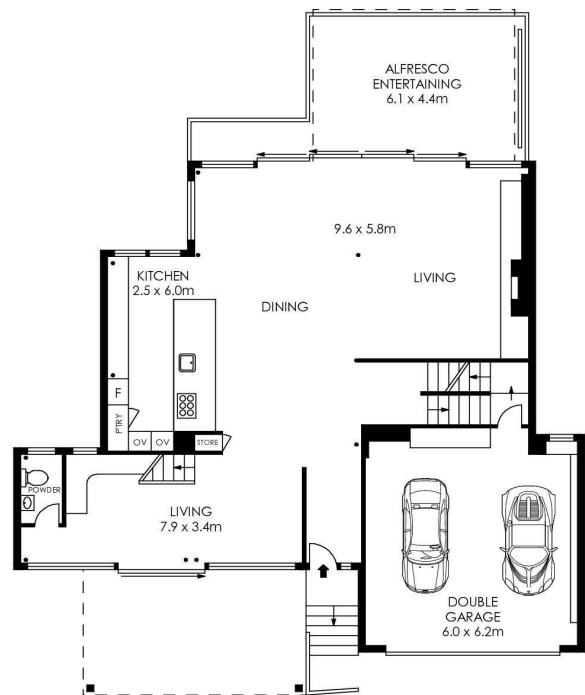
UPPER FLOOR



SITE PLAN
(NOT TO SCALE)



LOWER FLOOR



ENTRY FLOOR

APPROX. INTERNAL AREA = 480 m²
 APPROX. EXTERNAL AREA = 86 m²
 TOTAL = 566 m²
 LAND SIZE = 524.8 m²

PLANS SHOWN ONLY INDICATIVE OF LAYOUT. DIMENSIONS ARE APPROXIMATE.



20 Palm Beach Road, Palm Beach

LJ Hooker

LJ Hooker

LJ Hooker Palm Beach
 (02) 9974 5999

Disclaimer: All information contained therein is gathered from relevant third parties sources.
 We cannot guarantee or give any warranty about the information provided. Interested parties must rely solely on their own enquiries.