



Palm Beach, 2 Pacific Road

Sunlit Corner Gem Overlooking Whale Beach

Immaculately presented, this sun-drenched home occupies a prime corner block perched above Whale Beach, offering panoramic views of the Pacific Ocean. The open floorplan seamlessly connects the inside living to the alfresco entertaining area, boasting both ocean and district views. Whether you're watching whales migrate, enjoying breathtaking sunrises, or seeking a serene holiday house or sensational permanent residence, this idyllic Palm Beach retreat encapsulates the quintessential holiday lifestyle.

This modernly designed home, with its blend of contemporary elegance and beachside simplicity, is perfect for astute investors and homeowners alike.

- Combined Living and Dining: Experience comfort with a Jet Master fireplace, high vaulted ceilings, and a separate rumpus room.

- Seamless Indoor-Outdoor Flow: Polished timber flooring throughout with bi-fold doors



For Sale
Contact Agent

View
ljhooker.com.au/BBXF6Z

Contact
BJ Edwards
0420 304 140
bjedwards@ljhpb.com.au
David Edwards
0415 440 044
david.edwards@ljhooker.com.au



Disclaimer: All information contained therein is gathered from relevant third parties sources. We cannot guarantee or give any warranty about the information provided. Interested parties must rely solely on their own enquiries.

LJ Hooker Palm Beach
(02) 9974 5999

leading to the alfresco entertaining area.

- Spacious Accommodation: Three double bedrooms all with stunning views, and a fourth bedroom plus study/bunk room with an ensuite.
- Modern Kitchen: Light-filled, featuring a gas kitchen with a breakfast servery.
- Convenient Parking: Level access with off-street parking for three vehicles.
- Family-Friendly Features: A children's cubby house nestled by level lawns and access to a relaxed private platform with panoramic views.
- Redevelopment Potential: The site offers the potential for a sweeping panorama residence via redevelopment (STCA).

Ideal as a family home or a holiday weekender, this property is a coastal haven that promises a relaxed coastal lifestyle.

More About this Property

Property ID	BBXF6Z
Property Type	House
Land Area	594 m ²
Including	Ocean Views

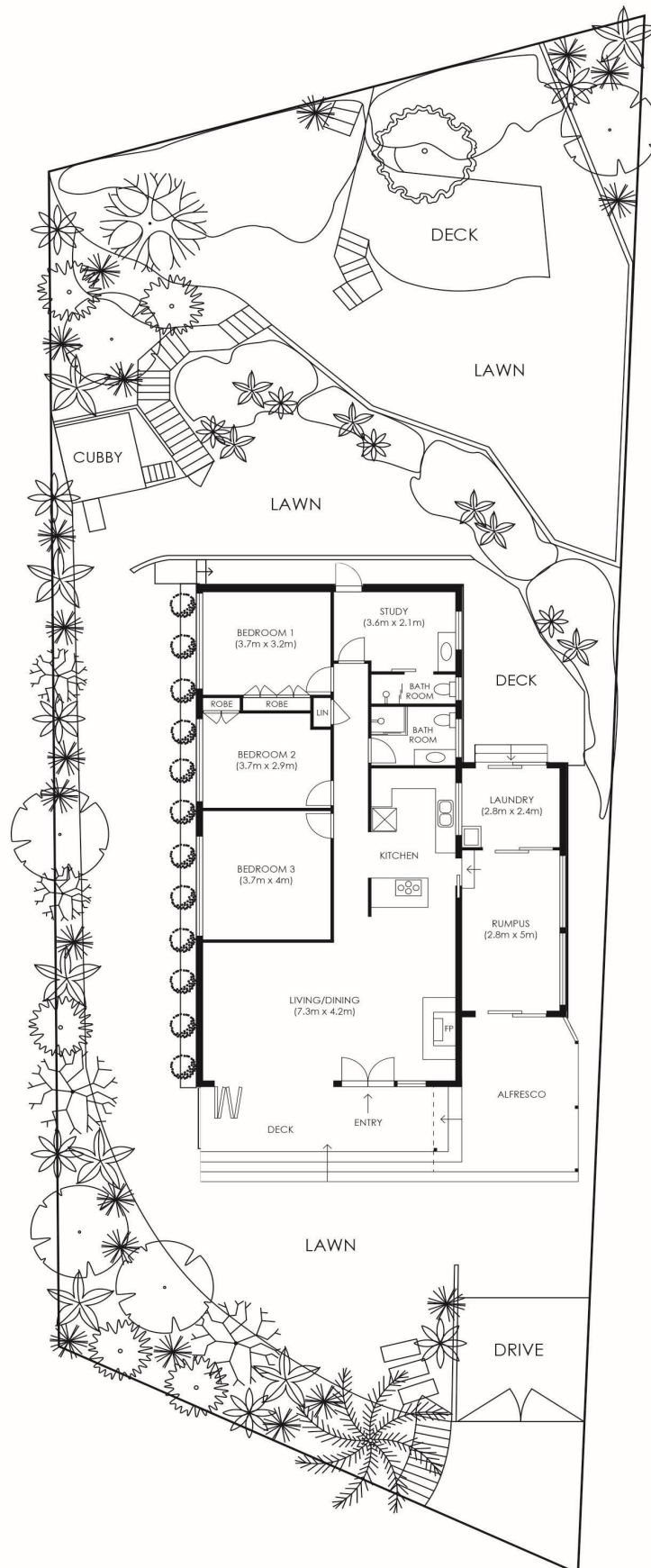
BJ Edwards 0420 304 140
Licensed Real Estate Agent | bjedwards@ljhpb.com.au
David Edwards 0415 440 044
Director | Licensee | David Edwards Palm Beach Realty Pty Ltd CLN 348342 | david.edwards@ljhooker.com.au

LJ Hooker Palm Beach (02) 9974 5999
1073 Barrenjoey Road, PALM BEACH NSW 2108
palmbeach.ljhooker.com.au | office@ljhpb.com.au



Disclaimer: All information contained therein is gathered from relevant third parties sources. We cannot guarantee or give any warranty about the information provided. Interested parties must rely solely on their own enquiries.

LJ Hooker Palm Beach
(02) 9974 5999



Plans are intended as a guide only. No representations or warranties of any nature whatsoever are given or intended and any person using this information should always rely on their own enquiries.
 j interiors - interior design, interior styling, floor plans, art, graphics. www.jinteriorsinteriordesign.blogspot.com

2 PACIFIC RD, PALM BEACH SITE PLAN

not to scale



LJ Hooker Palm Beach
 (02) 9974 5999

Disclaimer: All information contained therein is gathered from relevant third parties sources.
 We cannot guarantee or give any warranty about the information provided. Interested parties must rely solely on their own enquiries.