

16 Ocean Road, Palm Beach

## Oceanside Residence Steeped in Creative Soul & Rich Past

The Palladium + Palm Beach Studio

This extraordinary historical residence enjoys a strong connection with the fabric of the Palm Beach society. Positioned adjacent to the Palm Beach ocean shore and caressed by the sound of waves breaking this is a property of timeless elegance and rich history. The Palladium is a residence that has inspired writers and film makers; nourished artists and creatives; brought joy and connection to entire communities and continues to be a soulful retreat and haven for those seeking peace by the water.

Imagine living where history and horizon meet - where the story of the Palladium, Palm Beach winds into a new chapter, centred around a home that pulses with possibility.

Once built in the early 1930s as a vibrant Art-Deco dance hall - a social hub where music rose over polished floors, laughter echoed off walls, surf club fundraisers came alive, and the community gathered under ocean-saluted skies - the Palladium has always stood for more than brick and mortar. In that spirit, 16 Ocean Road transforms that legacy into living form: footsteps across polished floors, hum of music,

5 🏠 5 🚗 0 🚘

**FOR SALE**  
Contact Agent

**VIEW**  
By Appointment

**AGENTS**  
BJ Edwards  
0420 304 140  
bjedwards@ljhpb.com.au

David Edwards  
0415 440 044  
dedwards@ljhpb.com.au

**AGENCY**  
LJ Hooker Palm Beach  
(02) 9974 5999

All information contained therein is gathered from relevant third parties sources.  
We cannot guarantee or give any warranty about the information provided.  
Interested parties must rely solely on their own enquiries.

 **LJ Hooker**

sparkle of inspiration, echo of laughter - all cast anew in ocean light flooding broad windows.

Now reimagined as a grand, open living space - the lower level unfolds into a vast living room, sitting room and kitchen all oriented to frame the sea. With four generous bedrooms, 3.5 bathrooms, a covered deck, a private courtyard and even an outdoor beach shower, this is sanctuary and stage, perfect for soulful mornings, long summer nights, quiet reflection or joyful gathering.

Above, a second, self-contained studio inhabits the upper portion of the block - a tranquil studio and workshop with its own bed, bath, second laundry and kitchen. From its private deck you gaze across the entire stretch of Palm Beach and the shimmering Pacific - a quietly powerful vantage point, where calm or creativity can unfold undisturbed.

The natural gardens here are more than landscaping - they are living, breathing tribute to the land. Lush, nourishing, home to veggie patches, native flora, wildlife visits - every leaf and bloom tended with care. And all this life flourishes with arguably one of the finest views of the coast: gardens that nurture not just plants and veggie patches but an entire natural eco-system.

Here, you find the power of great views, the safety of privacy, the rhythm of the ocean and the peace of green sanctuary all set on 1,151 sqm of level and gentle sloping usable land. Every sunrise brings light dancing on water, every moment steeped in possibility.

## MORE DETAILS

Property ID	BTFF6Z
Property Type	House
Land Area	1151 m2
Including	Fire Place
	Close to Shops
	Close to Transport
	Ocean Views
	Water Front
	Water Views

### **BJ Edwards 0420 304 140**

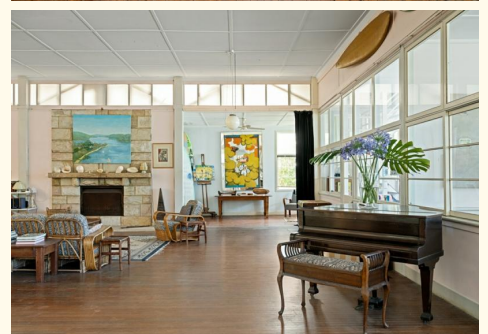
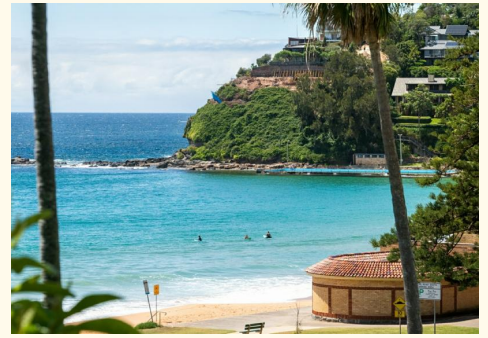
Licensed Real Estate Agent | [bjedwards@ljhpb.com.au](mailto:bjedwards@ljhpb.com.au)

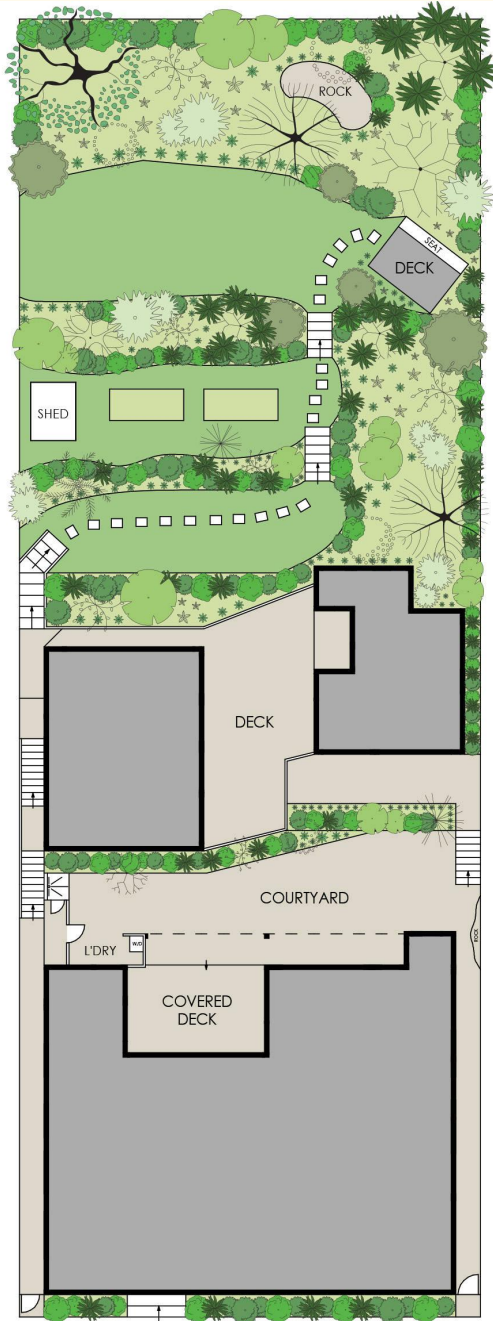
### **David Edwards 0415 440 044**

Director | Licensee | David Edwards Palm Beach Realty Pty Ltd CLN 348342 | [dedwards@ljhpb.com.au](mailto:dedwards@ljhpb.com.au)

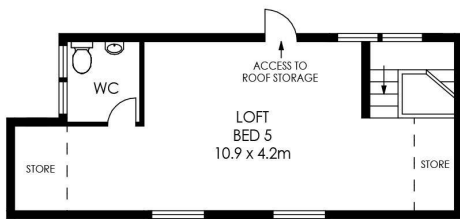
### **LJ Hooker Palm Beach (02) 9974 5999**

1073 Barrenjoey Road, PALM BEACH NSW 2108  
[palmbeach.ljhooker.com.au](http://palmbeach.ljhooker.com.au) | [office@ljhpb.com.au](mailto:office@ljhpb.com.au)





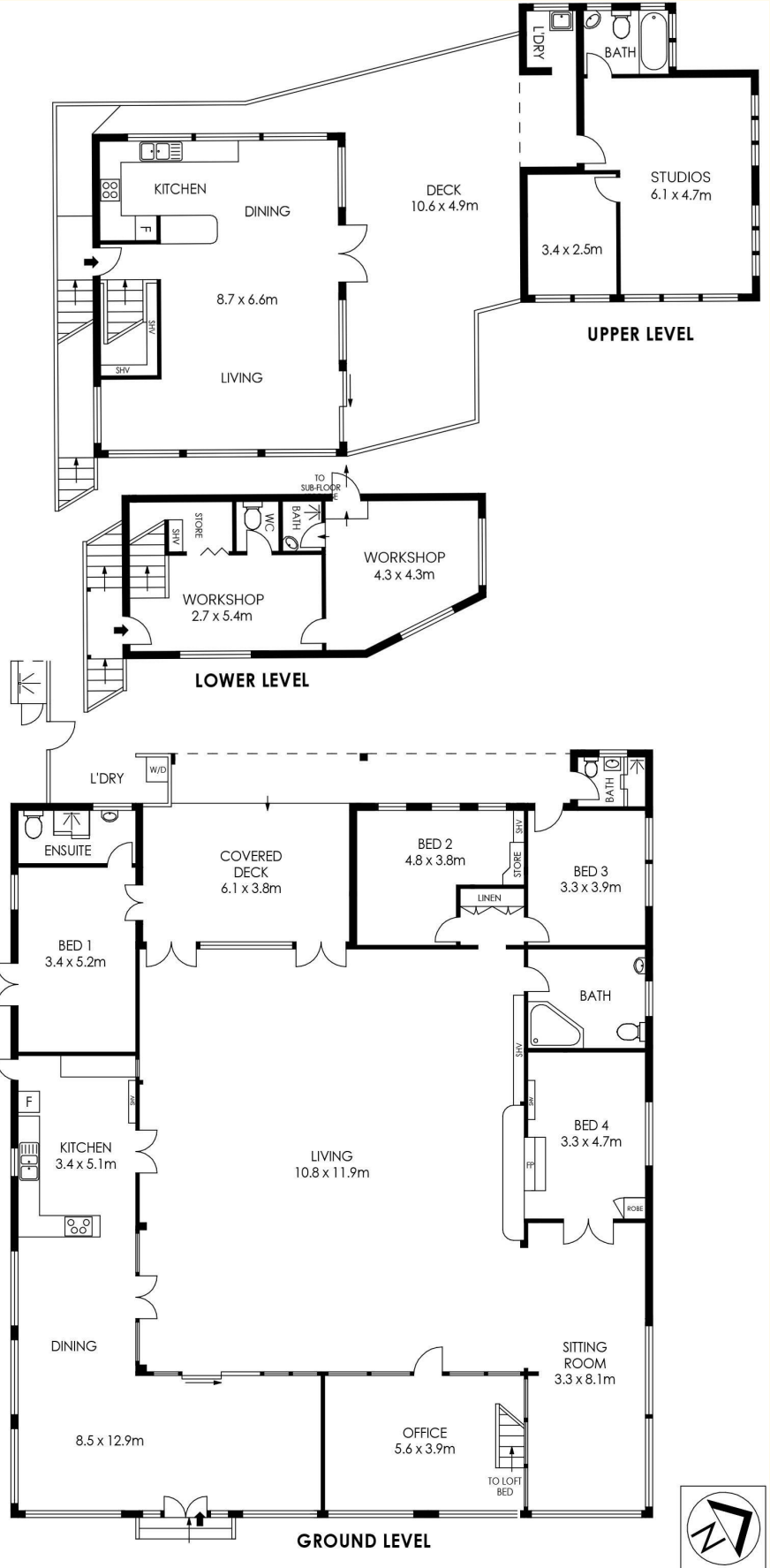
**SITE PLAN**  
(NOT TO SCALE)



**FIRST LEVEL (ABOVE OFFICE)**

APPROX. INTERNAL AREA = 528 m<sup>2</sup>  
 APPROX. EXTERNAL AREA = 81 m<sup>2</sup>  
 TOTAL = 609 m<sup>2</sup>  
 LAND SIZE = 1151 m<sup>2</sup>

PLANS SHOWN ONLY INDICATIVE OF LAYOUT. DIMENSIONS ARE APPROXIMATE.



## 16 Ocean Road, Palm Beach

All information contained therein is gathered from relevant third parties sources.  
 We cannot guarantee or give any warranty about the information provided.  
 Interested parties must rely solely on their own enquiries.