


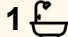



14 Waratah Road, Palm Beach

'Carinya' —A Cherished Palm Beach Beachfront with Natural Sweeping Views

For over a century, 'Carinya' has been lovingly held within the same family —a rare jewel passed down across generations before the area was discovered as one of the world's most coveted coastal playgrounds, this much-loved cottage now stands as both a sanctuary and a legacy.

Coming to the market for the very first time, 'Carinya' represents an extraordinary opportunity to secure an irreplaceable piece of Palm Beach history in one of Palm Beach's most tightly held locations. Nestled in an exclusive cul-de-sac, with level grounds that meet Pittwater's shimmering edge, the home commands uninterrupted sweeping, panoramic views across the world-class waterways of Pittwater, stretching out to Ku-ring-gai National Park, the iconic Lion Island, and the full expanse of Station Beach to the timeless majesty of Barrenjoey Headland. These world-class vistas remain as untouched today as they have for generations and with the surrounding national park and protected waterways, they are guaranteed to remain un-changed, a forever backdrop of natural splendour that can never be inhibited.

3  1  2 

FOR SALE
\$13,400,000

AGENTS

David Edwards
0415 440 044
dedwards@ljhpb.com.au

BJ Edwards
0420 304 140
bjedwards@ljhpb.com.au

AGENCY

LJ Hooker Palm Beach
(02) 9974 5999

All information contained therein is gathered from relevant third parties sources.
We cannot guarantee or give any warranty about the information provided.
Interested parties must rely solely on their own enquiries.

 **LJ Hooker**

Immaculately preserved, this quintessential Palm Beach residence brims with timeless charm. Original hardwood floors and a sandstone fireplace speak of its storied past, while a sun-drenched lounge frames sweeping Pittwater views across to Ku-ring-gai Chase National Park and Lion Island. Two leafy courtyards shaded by frangipanis invite barefoot afternoons and long, lazy lunches, capturing the essence of coastal living as it was always meant to be.

Opportunities of this calibre are remarkably rare —properties along this prized stretch are tightly held, often handed down from one generation to the next. For the discerning buyer, 'Carinya' is more than a home; it is an heirloom, a chance to step into a legacy and embrace a lifestyle defined by history, beauty and belonging.

Key Features:

- Rare level beachfront in a tightly held, private, and highly coveted setting
- Sweeping panoramic views across world-class Pittwater waterways
- Outlook to Ku-ring-gai National Park and the iconic Lion Island
- Full-length vistas over Station Beach and Barrenjoey Headland
- Protected and unchanging natural landscape, ensuring views remain forever unobstructed
- Level lawns and leafy, shaded gardens with outdoor shower and waterfront frontage
- Light-filled sunroom capturing Pittwater views, ideal for dining, study, or second living space
- Three well-proportioned bedrooms; master with ensuite, WC, and attached laundry
- Original hardwood floors and a sandstone fireplace, french doors and large windows throughout, maximising light and sea breezes
- Original kitchen with checkerboard tiles and abundant storage
- Single lock up garage with additional storage

Where history, beauty, and privacy unite on one of Palm Beach's most prized frontages. A sanctuary to be treasured and a legacy to be lived, this exceptional property awaits its next custodian to write the next chapter in its remarkable story.

MORE DETAILS

Property ID	BPBF6Z
Property Type	House
Land Area	556.4 m2
Including	Toilets (1)

David Edwards 0415 440 044

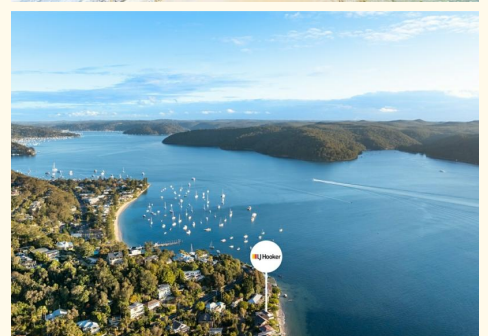
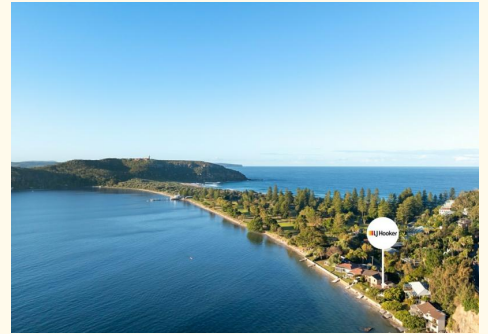
Director | Licensee | David Edwards Palm Beach Realty Pty Ltd CLN 348342 | dedwards@ljhpb.com.au

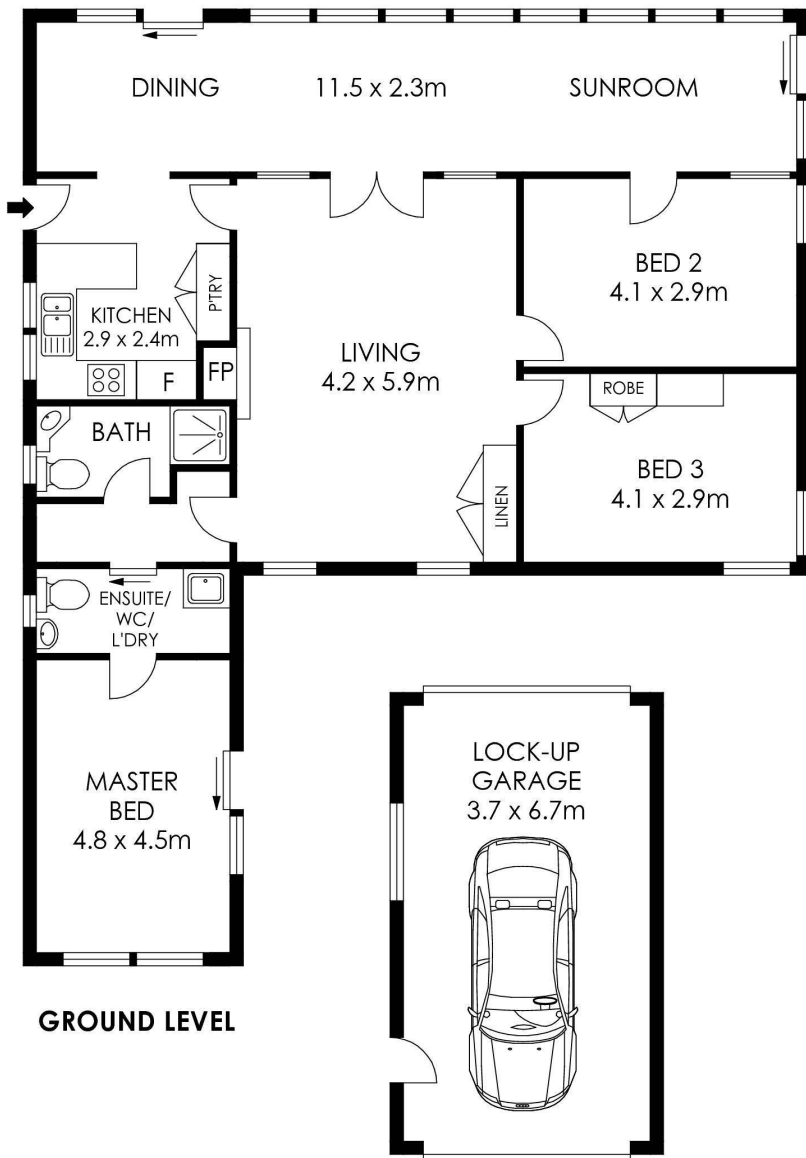
BJ Edwards 0420 304 140

Licensed Real Estate Agent | bjedwards@ljhpb.com.au

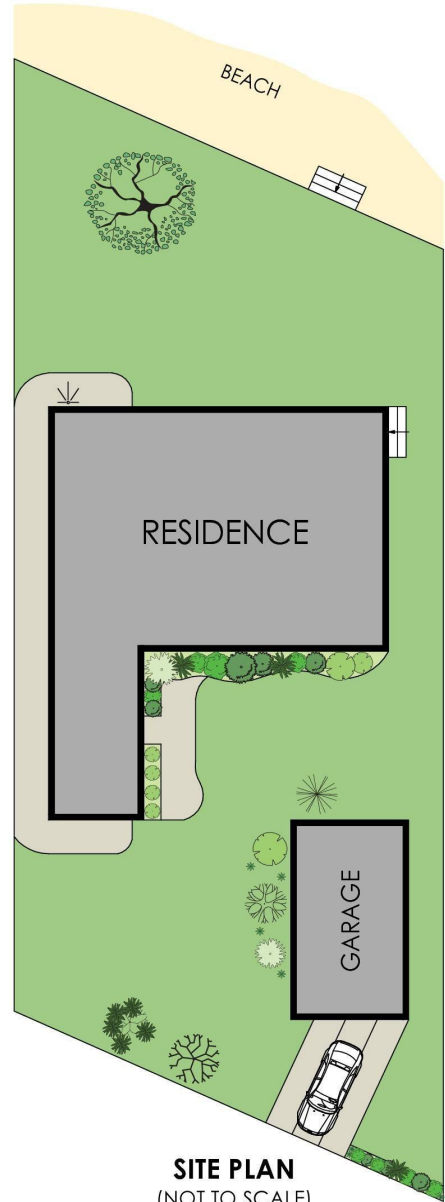
LJ Hooker Palm Beach (02) 9974 5999

1073 Barrenjoey Road, PALM BEACH NSW 2108
palmbeach.ljhooker.com.au | office@ljhpb.com.au



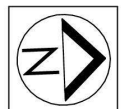


GROUND LEVEL



SITE PLAN
(NOT TO SCALE)

APPROX. INTERNAL AREA	= 112 m ²
APPROX. EXTERNAL AREA	= 25 m ²
TOTAL	= 137 m ²
LAND SIZE	= 556.4 sqm



PLANS SHOWN ONLY INDICATIVE OF LAYOUT. DIMENSIONS ARE APPROXIMATE.

14 Waratah Road, Palm Beach

All information contained therein is gathered from relevant third parties sources.
We cannot guarantee or give any warranty about the information provided.
Interested parties must rely solely on their own enquiries.