



Palm Beach, 124 Pacific Road

"Chateau Sur-Mer" Exquisite design, grand proportions and all-day sunshine

Boasting the stately presence of a fine chateau, this remarkable residence enjoys a commanding position on the ridgeline above Palm Beach with views spanning from the Central Coast to Pittwater. Set on an exceptionally private corner block, there's an elegance here that's undeniable with a classic Mansard roofline and the grandeur of its entryway; double-height ceilings, rich hardwood floors and French windows mark this as a home of rare distinction and craftsmanship.

The floorplan is expansive and fluid yet provides a superb collection of quiet areas and nooks to relax away from family and guests; the ground floor is joined by decks on both sides with a choice of alfresco and sheltered entertaining options. The upper level is just as grand as main floor and offers four to five bedrooms; two are ensuites, including the master with a separate sitting room and marble-finished ensuite.

5

4

2

For Sale
EOI guide \$7m

View
By Appointment

Contact
Peter Robinson
0401 219 077
peter.robinson@ljhooker.com.au
Greer Bradbury
GBradbury@ljhpb.com.au



Disclaimer: All information contained therein is gathered from relevant third parties sources. We cannot guarantee or give any warranty about the information provided. Interested parties must rely solely on their own enquiries.

LJ Hooker Palm Beach
(02) 9974 5999

Architecturally designed to capture all-day light with a northeast aspect, this residence enjoys magnificent sunrises over the ocean to sunsets on the Pittwater side —it's an exquisite expression of a classic Palm Beach holiday home.

- Understated glamour; classic Palm Beach residence from end-to-end
- Architecturally designed, double brick construction, premium quality
- Beautifully balanced floorplan; grand entryway and soaring ceilings
- Ridgeline position offers views to Central Coast back to Pittwater
- Expansive decks on both sides join up with well-established gardens
- Several living zones, home office, casual and formal dining areas
- Spacious stone-topped/gas kitchen, upper level family room/5th bed
- Large, comfortable bedrooms, two are ensuite including the master
- Hardwood floors, French windows, air con, dbl garage, ample storage
- Five-minute walk to the beach with public footpath across the road

More About this Property

Property ID	B89F6Z
Property Type	House
Land Area	760 m²

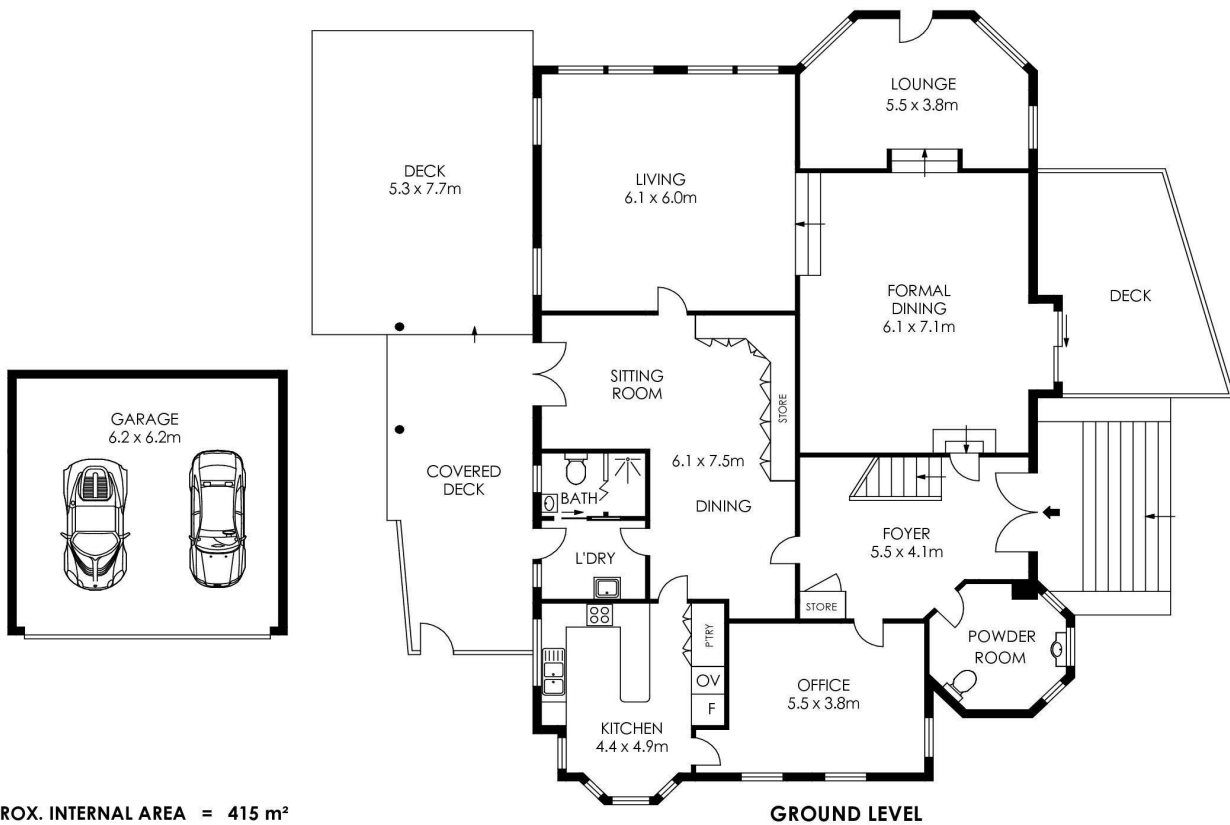
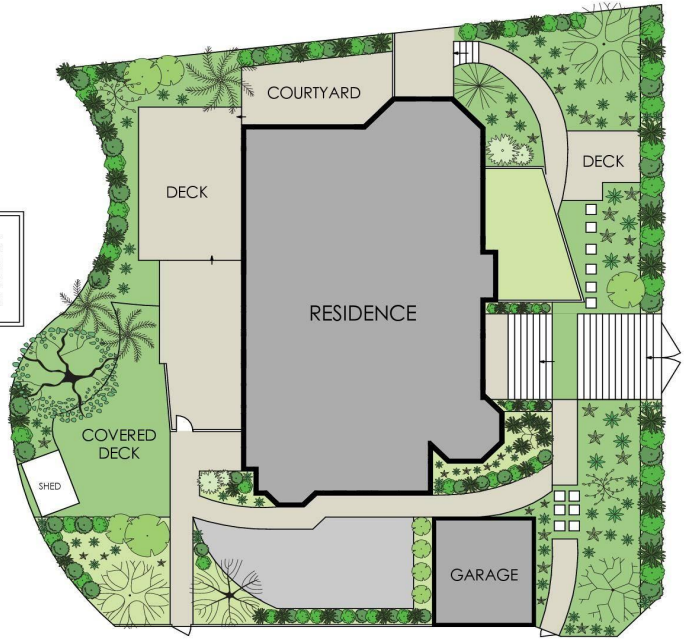
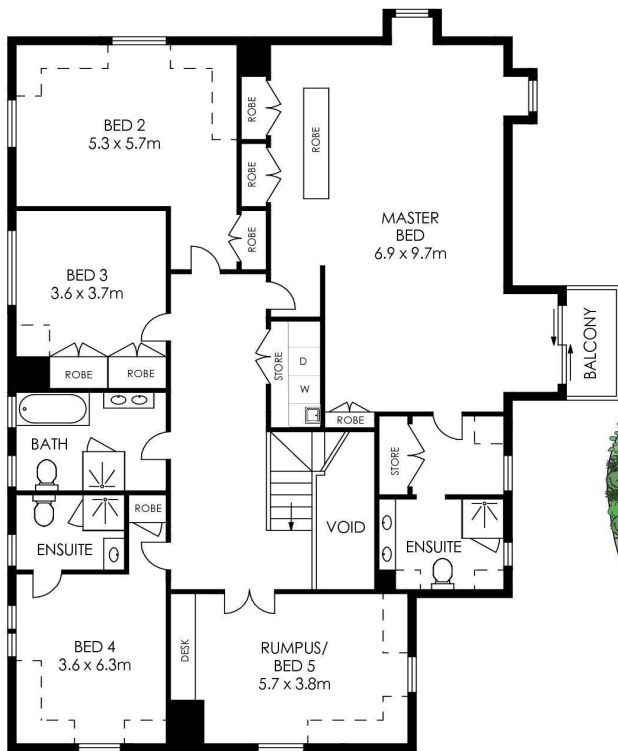
Peter Robinson 0401 219 077
Principal â€“ Peter Robinson Real Estate Pty Ltd CLN 10121506 |
peter.robinson@ljhooker.com.au
Greer Bradbury
Client Experience Administrator | GBradbury@ljhpb.com.au

LJ Hooker Palm Beach (02) 9974 5999
1073 Barrenjoey Road, PALM BEACH NSW 2108
palmbeach.ljhooker.com.au | office@ljhpb.com.au



Disclaimer: All information contained therein is gathered from relevant third parties sources. We cannot guarantee or give any warranty about the information provided. Interested parties must rely solely on their own enquiries.

LJ Hooker Palm Beach
(02) 9974 5999



APPROX. INTERNAL AREA = 415 m²
 APPROX. EXTERNAL AREA = 130 m²
 TOTAL = 545 m²
 LAND SIZE = 760 m²



124 Pacific Road, Palm Beach

LJ Hooker

LJ Hooker

LJ Hooker Palm Beach
 (02) 9974 5999

Disclaimer: All information contained therein is gathered from relevant third parties sources.
 We cannot guarantee or give any warranty about the information provided. Interested parties must rely solely on their own enquiries.