




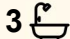

115 Pacific Road, Palm Beach

Contemporary Family Home With Panoramic Views

Promising effortless beachside living, this classic Palm Beach residence pairs phenomenal vistas with supreme comfort and understated luxury. Set in a quiet, leafy enclave on the lower end of Pacific Road, the home is positioned on a sprawling 1265sqm of private, level land and basks in uninterrupted north-facing views in one of Palm Beach's most exclusive settings. This beautiful residence enjoys world-class vistas across Palm Beach, Barrenjoey Headland, Cape Three Points, and the calm waters of Pittwater.

Coming to the market for the first time in almost 30 years, this sanctuary-like weekender or full-time residence on one of Palm Beach's most sought-after streets presents a rare opportunity to enjoy luxury coastal living, year-round.

Beyond the impressive views, a dual-level layout is expansive and inviting, defined by a seamless connection between sunlit interiors and outdoor spaces. On the lower level, polished hardwood floors are complemented by galleries of glass windows and doors that welcome natural light into the home. An open-plan living, kitchen, and dining room features neutral tones and premium finishes, connecting to an expansive deck that offers al fresco and sheltered entertaining

6  3  2 

FOR SALE
\$10,000,000

AGENTS

BJ Edwards
0420 304 140
bjedwards@ljhpb.com.au

David Edwards
0415 440 044
dedwards@ljhpb.com.au

AGENCY

LJ Hooker Palm Beach
(02) 9974 5999

All information contained therein is gathered from relevant third parties sources.
We cannot guarantee or give any warranty about the information provided.
Interested parties must rely solely on their own enquiries.

 **LJ Hooker**

options. The kitchen is sleek and functional, with ample storage and a large island bench. On the upper level, two lavish master suites exude elegance and comfort, each boasting floor-to-ceiling glass windows that frame ocean views.

- Unrivalled views of Barrenjoey headland, Palm Beach, Pittwater, Lion Island and the Central Coast
- Sprawling 1265sqm, private level landholding
- Large timber deck ideal for entertaining, separate external courtyard surrounded by leafy tree canopy
- Expansive open-plan living, kitchen and dining that opens to views
- Sleek kitchen with abundant storage, gas stove, modern appliances, island bench ideal for entertaining
- Polished hardwood floors, French windows, operable glass doors and ample storage throughout
- Carpeted upper level houses two master suites. One features a walk-in robe and a kitchenette. Shared ensuite
- Four sunlit bedrooms on the lower level, three with built-ins, two with direct access to deck
- Three spacious, modern bathrooms + large internal laundry for added convenience
- Long driveway providing ample off-street parking + well-established gardens offer supreme privacy
- Undercover parking for two cars, additional driveway parking and plenty of off-street parking

MORE DETAILS

Property ID	BPFF6Z
Property Type	House
Land Area	1265 m2

BJ Edwards 0420 304 140

Licensed Real Estate Agent | bjedwards@ljhpb.com.au

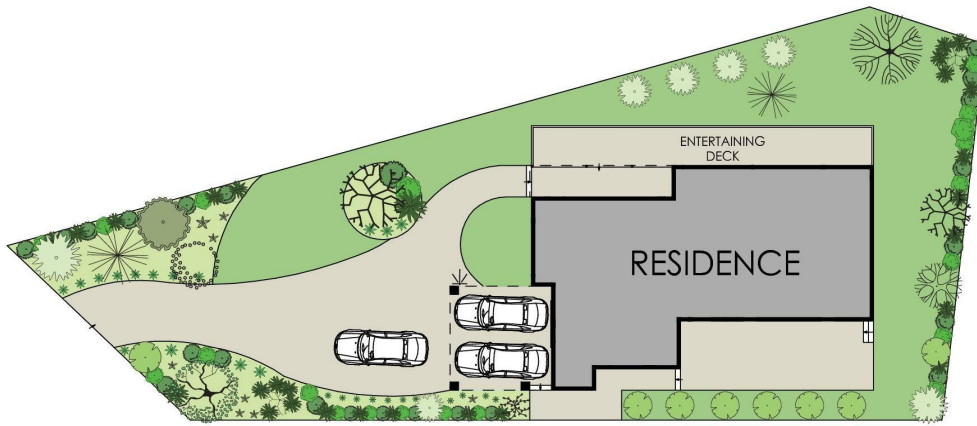
David Edwards 0415 440 044

Director | Licensee | David Edwards Palm Beach Realty Pty Ltd CLN 348342 | dedwards@ljhpb.com.au

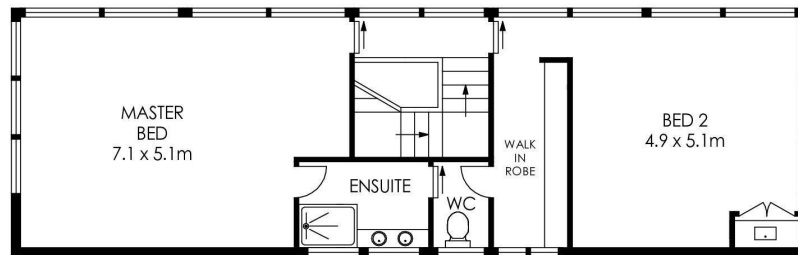
LJ Hooker Palm Beach (02) 9974 5999

1073 Barrenjoey Road, PALM BEACH NSW 2108
palmbeach.ljhooker.com.au | office@ljhpb.com.au

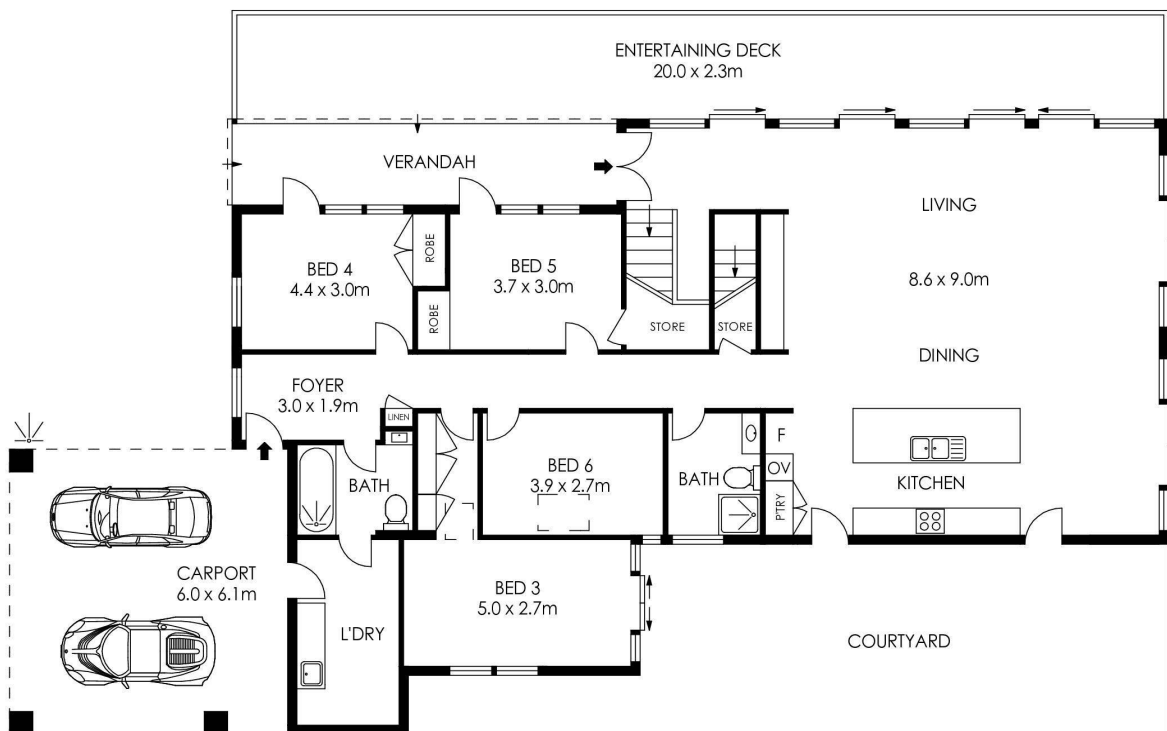




SITE PLAN
(NOT TO SCALE)



UPPER LEVEL



ENTRY LEVEL

APPROX. INTERNAL AREA = 269 m²
 APPROX. EXTERNAL AREA = 116 m²
 TOTAL = 385 m²
 LAND SIZE = 1265 m²



PLANS SHOWN ONLY INDICATIVE OF LAYOUT. DIMENSIONS ARE APPROXIMATE.

115 Pacific Road, Palm Beach



All information contained therein is gathered from relevant third parties sources.
 We cannot guarantee or give any warranty about the information provided.
 Interested parties must rely solely on their own enquiries.

