



Palm Beach, 1048 Barrenjoey Road

Timeless Classic in the Heart of Palm Beach

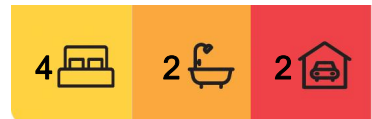
Introducing 1048 Barrenjoey Road, Palm Beach — a timeless gem perfectly situated on 1,056sqm of near level land in the heart of the Palm Beach village, approximately 300m from the world-class Pittwater. This classic Palm Beach home exudes all the character, charm and potential you'd expect from this prestigious locale.

Step inside to discover an inviting open plan living and dining area, offering a seamless flow perfect for both relaxation and entertaining. With 4 bedrooms and 2 bathrooms, including an oversized master room that effortlessly doubles as a serene retreat or rumpus, complete with a character-filled ensuite where you can shower under the stars.

Outside, a protected rear courtyard, romantically adorned with vibrant



Disclaimer: All information contained therein is gathered from relevant third parties sources. We cannot guarantee or give any warranty about the information provided. Interested parties must rely solely on their own enquiries.



For Sale

Contact Agent

View

ljhooker.com.au/895F6Z

Contact

BJ Edwards

0420 304 140

bjedwards@ljhpb.com.au

David Edwards

0415 440 044

david.edwards@ljhooker.com.au

LJ Hooker Palm Beach
(02) 9974 5999

bougainvillea, sets the scene for enchanting evening soirees with loved ones. Meanwhile, the enormous rear garden beckons as a blank canvas for your dreams, backing onto the serene Mackay reserve, ensuring unparalleled privacy and tranquility as you embrace the vastness of the land.

With its prime location and abundant potential, 1048 Barrenjoey Road presents an unparalleled opportunity to create the home of your dreams in one of Palm Beach's most coveted neighborhoods.

We eagerly anticipate welcoming you to explore all that 1048 Barrenjoey Road, Palm Beach, has to offer — where classic comfort, and opportunity converge in perfect harmony.

More About this Property

Property ID	895F6Z
Property Type	House
Land Area	1056 m ²

BJ Edwards 0420 304 140

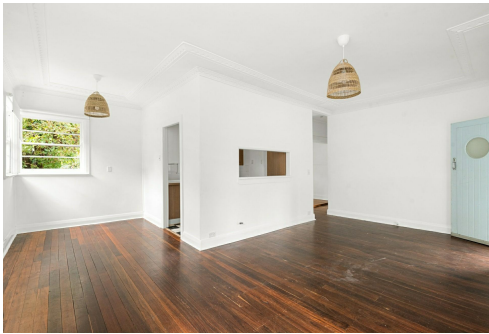
Licensed Real Estate Agent | bjedwards@ljhpb.com.au

David Edwards 0415 440 044

Director | Licensee | Independent Contractor | david.edwards@ljhooker.com.au

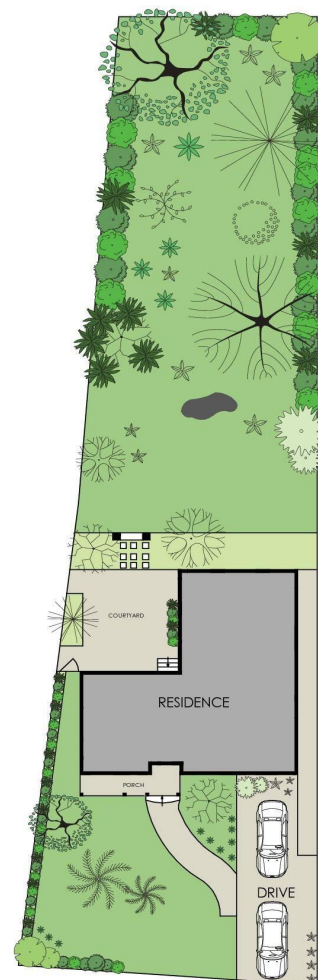
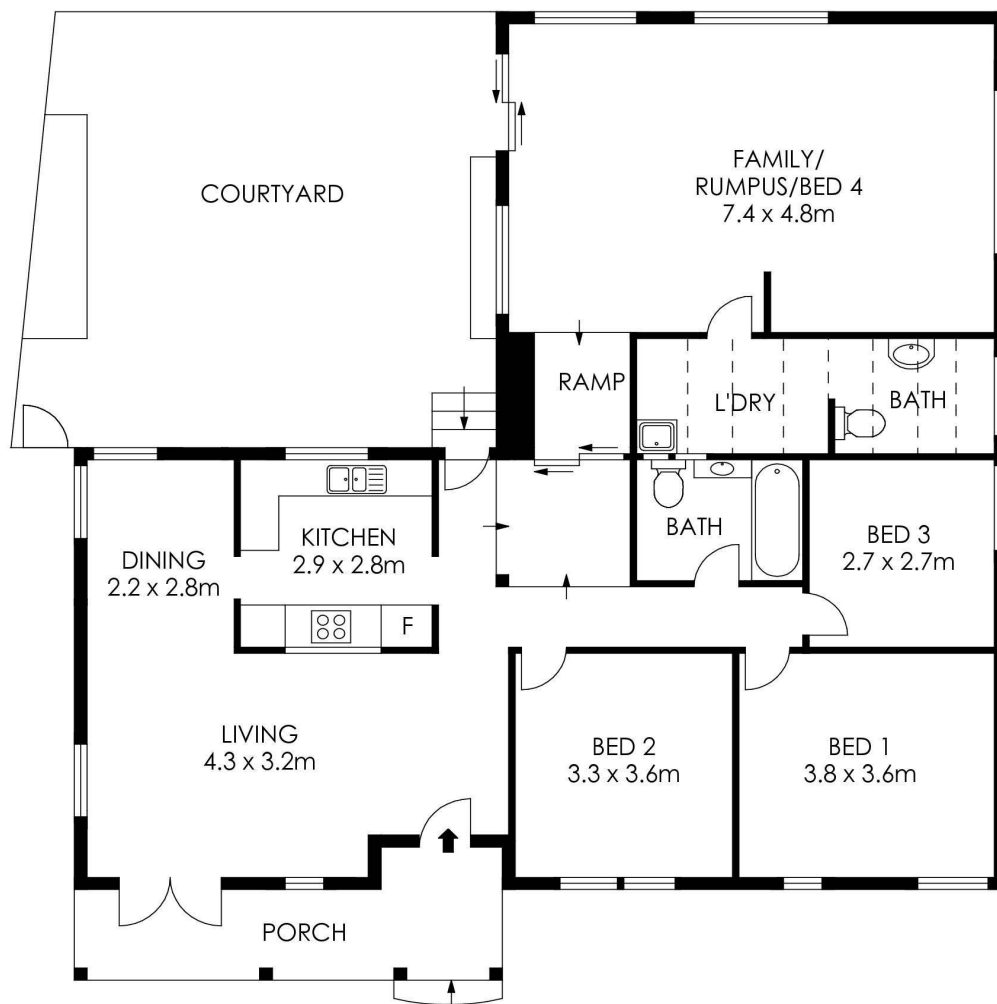
LJ Hooker Palm Beach (02) 9974 5999

1073 Barrenjoey Road, PALM BEACH NSW 2108
palmbeach.ljhooker.com.au | office@ljhpb.com.au



LJ Hooker Palm Beach
(02) 9974 5999

Disclaimer: All information contained therein is gathered from relevant third parties sources. We cannot guarantee or give any warranty about the information provided. Interested parties must rely solely on their own enquiries.



SITE PLAN
(NOT TO SCALE)

APPROX. INTERNAL AREA = 150 m²
 APPROX. EXTERNAL AREA = 63 m²
 TOTAL = 213 m²
 LAND SIZE = 1056 m²



PLANS SHOWN ONLY INDICATIVE OF LAYOUT. DIMENSIONS ARE APPROXIMATE.

1048 Barrenjoey Road, Palm Beach

LJ Hooker

LJ Hooker

LJ Hooker Palm Beach
(02) 9974 5999

Disclaimer: All information contained therein is gathered from relevant third parties sources. We cannot guarantee or give any warranty about the information provided. Interested parties must rely solely on their own enquiries.