

48 Pallara Avenue, Pallara

SOLD BY KEVIN AHN & SIENNA KIM


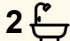
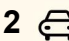
Positioned at the prestigious gateway of Stockland Estate, this modern lowset is where effortless family living begins. From the moment you step inside, the home feels calm and practical, with light-filled living spaces where everyone can come together, plus just enough separation when you want your own quiet corner. Add a covered patio and a secure backyard, and you've got a place that suits busy weekdays and relaxed weekends equally well.

Highlights:

- A contemporary lowset that keeps life simple, low-maintenance and comfortably connected
- Light-filled open-plan living plus a second lounge so there's always room to do your own thing
- A private master retreat with an ensuite and walk-in robe, while the remaining bedrooms all include built-in robes
- Covered alfresco and a fenced lawn that's ideal for kids, pets and long, lazy outdoor meals
- Prime Pallara address close to parks, schools, shops and the main roads that get you where you need to go

Being positioned close to the entrance of the estate means you can get on the road quickly without winding through streets every time you

All information contained therein is gathered from relevant third parties sources. We cannot guarantee or give any warranty about the information provided. Interested parties must rely solely on their own enquiries.

4  2  2 

FOR SALE

Please Call

AGENTS

Kevin Ahn
0400 098 188
kevinahn@ljhsbh.com.au

Sienna Kim
0477 735 068
siennakim@ljhpp.com.au

AGENCY

LJ Hooker Property Partners
07 3344 0288

 LJ Hooker

head out, which is a real win for work commutes, school runs and last-minute dashes to the shops.

Pallara also gives you that lovely in-between lifestyle, it feels quiet and family-oriented at home, yet you're still within comfortable reach of the bigger retail hubs, key motorways (M7) and a choice of parks and schools, so weekends and weekdays both run that little bit smoother.

- 300m Pallara Shopping Village feat. brand-new Coles, Andonis cafe
- 1.8km Pallara State School Junior Campus
- 3.8km Pallara State School Senior Campus
- 5.8km Glenala State High School

Picture pulling into your double garage after work, groceries in the boot, and walking straight inside without getting caught in the weather. Shoes off at the entry, a quick hello, then you're in the heart of the home where the kitchen, dining and living all come together so you can cook, chat and keep an eye on what's happening around you, with a walk-in pantry ready to organise the haul and keep the benchtops clear.

This is a home designed for real routines. The open-plan area is where the day naturally unfolds, with large windows welcoming in plenty of natural light so everything feels bright and easy from the moment you wake up. Have breakfast at the bench before school, dinner simmering on the stove during the week, and slow Sunday mornings where the house feels calm and comfortable, with ceiling fans throughout helping keep the air moving as the seasons change. When you want a little separation, the second lounge is ready for movie nights, kids' playtime, or a quiet scroll and a cup of tea while the rest of the house carries on.

The bedrooms are set up so everyone can have their own corner of the world. The master suite feels like a little retreat at the end of the day, with the privacy you want and the ensuite convenience you'll cherish. The remaining bedrooms, all with built in robes, give you options too, whether that's kids' rooms, a guest room for visitors, or the home office you've been promising yourself.

Step outside and you'll see where weekends will be spent. The covered patio is made for easy entertaining, from quick midweek dinners outdoors to friends dropping by for a casual catch-up. The fully fenced lawn means the kids can run around safely, and pets can potter about while you relax in the shade and let the afternoon drift by.

If you're chasing a home that feels welcoming from the minute you arrive, and a layout that supports the way you actually live, 48 Pallara Avenue is well worth your time. For more information or to arrange your inspection, contact Kevin Ahn or Sienna Kim.

All information contained herein is gathered from sources we consider to be reliable. However, we cannot guarantee or give any warranty about the information provided and interested parties must solely rely on their own enquiries.

Sunday & Summer Property Specialists Pty Ltd with Sunnybank Districts P/L T/A LJ Hooker Property Partners ABN 56 653 127 701 / 21 107 068 020

MORE DETAILS

Property ID B3TAF4R
Property Type House
Land Area 391 m2
Including Air Conditioning
Toilets (2)
Balcony
Dishwasher
Outdoor Entertaining
Built-in-Robes
Secure Parking
Fully Fenced
Remote Garage

Kevin Ahn 0400 098 188

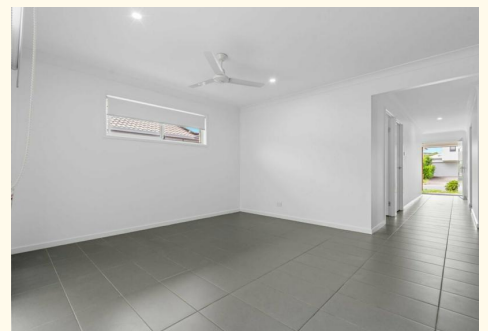
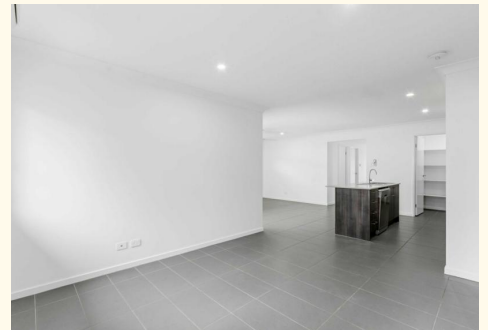
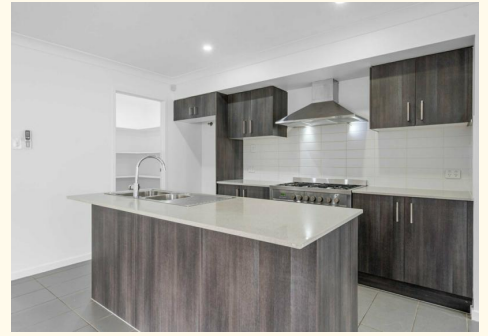
Agent/Independent Contractor | kevinahn@ljhsbh.com.au

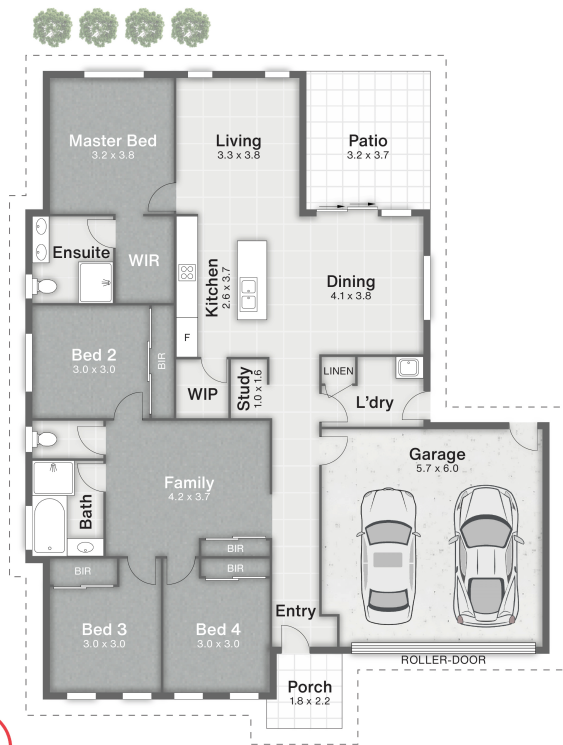
Sienna Kim 0477 735 068

Agent with Kevin Ahn | siennakim@ljhpp.com.au

LJ Hooker Property Partners 07 3344 0288

25 Pinelands Road, SUNNYBANK HILLS QLD 4109
propertypartners.ljhooker.com.au | sunnybankhills@ljhpp.com.au





- 1 Porch
- 2 Garage
- 3 Patio



48 Pallara Avenue **PALLARA**

4 Beds | 2 Bathrooms | 2 Car Spaces | 201m² | 391m²

LJ Hooker Property Partners

All dimensions are approximate; they are subject to errors and inaccuracies and no liability will be accepted. Plans are shown for marketing purposes only.

All information contained therein is gathered from relevant third parties sources. We cannot guarantee or give any warranty about the information provided. Interested parties must rely solely on their own enquiries.

LJ Hooker