



35 Escalade Circuit, Pallara

UNDER CONTRACT BY MAYANK PATEL

UNDER CONTRACT BY MAYANK PATEL

This beautifully designed four-bedroom home offers a perfect balance of style, space, and functionality, ideal for modern family living. Set on a well-appointed property complete with a swimming pool and solar power, the home features high ceilings, tall doors, and quality finishes throughout, creating a light-filled and welcoming atmosphere from the moment you step inside.

At the heart of the home is the expansive open-plan living and dining area, enhanced by raked ceilings and durable vinyl flooring. The contemporary kitchen includes a walk-in pantry and flows seamlessly into the living space, making it ideal for entertaining, while a separate media room provides the perfect space for movie nights or relaxed family living. Bifold doors open to the side access, allowing for effortless indoor-outdoor living and excellent natural ventilation.

Accommodation is generous and thoughtfully planned, with four well-sized bedrooms. The master suite features a walk-in robe, double vanity ensuite, and private side access to the backyard. One additional bedroom includes a walk-in robe, while the remaining bedrooms are fitted with built-in robes. The main bathroom includes a

4  2  2 

FOR SALE
UNDER CONTRACT

VIEW
By Appointment

AGENCY
LJ Hooker Property Partners - Forest
Lake
(07) 3372 0400

All information contained therein is gathered from relevant third parties sources.
We cannot guarantee or give any warranty about the information provided.
Interested parties must rely solely on their own enquiries.

 **LJ Hooker**

bathub, complemented by a separate powder room for added convenience.

Additional features include ducted air conditioning, carpeted bedrooms, a second living area, a study nook, and a laundry with side access. A double garage provides secure parking, while the solar system adds long-term energy efficiency. Designed for comfort and practicality, this home delivers an exceptional lifestyle with every detail carefully considered.

Property Features: 4 bedrooms, 2 bathrooms plus powder room, media room, double garage, open-plan living, swimming pool, solar power, ducted air conditioning, high ceilings.

- 4 bedrooms, master with walk-in robe and ensuite
- 2 bathrooms plus separate powder room
- Open-plan living and dining
- Media room
- Kitchen with walk-in pantry
- Ducted air conditioning
- High ceilings with raked feature
- " Vinyl flooring to living areas, carpeted bedrooms
- " Bifold doors for indoor—outdoor living
- Swimming pool and solar power
- Laundry with side access
- Double garage
- Close to Pallara Shopping Centre, Pallara State School, parks and public transport

Buying | Selling | Renting Contact your Pallara & Heathwood #1 Resident Agent & Suburb Specialist, Mayank Patel today for all your property needs on 0430402866

Disclaimer: This property is being sold without a price; the website may have filtered the property into a price bracket for website functionality purposes. Contact Mayank Patel on 0430402866 today for your exclusive tour.

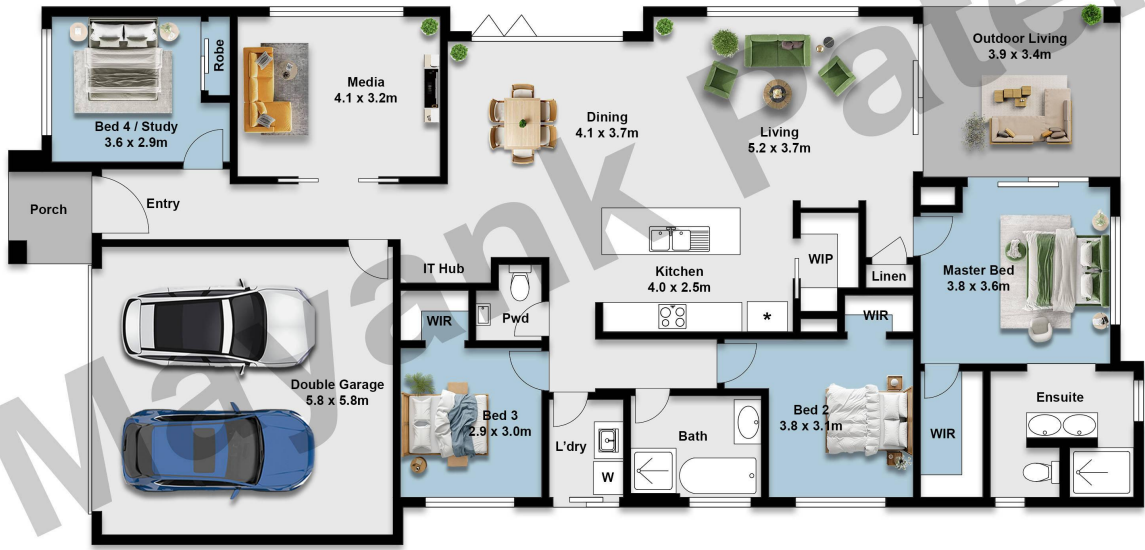
Disclaimer: The information presented in this advertisement has been diligently prepared to ensure its accuracy and truthfulness. However, we bear no responsibility and hereby disclaim all liability for errors, inaccuracies, misstatements that may be found within. We strongly advise potential purchasers to conduct their own thorough assessments and financial investigations to independently verify the information provided herein. We have also used virtual grass on the photos.

MORE DETAILS

Property ID J6J23
Property Type House
Land Area 403 m2
Including Ensuite
Study
Air Conditioning
Ducted Cooling
Ducted Heating
Pool
Deck
Dishwasher
Outdoor Entertaining
Built-in-Robes
Secure Parking
Fully Fenced
Remote Garage
Solar Panels
Car Parking - Surface
Close to Schools
Close to Shops
Close to Transport
Creative

LJ Hooker Property Partners - Forest Lake (07) 3372 0400
Shop H, 255 Forest Lake Boulevard, FOREST LAKE QLD 4078
11834 |





This floor plan is not to scale. Areas and dimensions are approximate and therefore floor plan should only be used for illustrative purposes. Plants and furnitures are decorative only.

Approximate Total Building Size : 220 sqm

35 Escalade Circuit, Pallara



Mayank Patel 0430 402 866