

Pallara, 10 Heseltine Place

SOLD BY SERGIO CHEN & KEVIN AHN

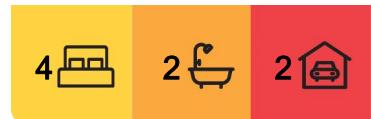
Barely 4-years-young, this beautiful family home is tenanted until May and offers a perfect opportunity for investors and upsizers alike - whether extending the lease or moving your own lucky family in to take advantage of this alluring fuss-free lifestyle!

- Stylish and super low-maintenance brick lowset atop fantastic 444 sqm block
- Exceptional family-focused layout with four bedrooms, open plan living, and separate media room
- High ceilings, ducted air-conditioning, ceiling fans and LED lighting throughout
- Colorbond fence and roof, plus kitchen with Westinghouse appliances and stone benchtops
- Lovely position in quiet cul-de-sac with family amenities at your fingertips

Tucked away within pristine suburbia, this beautiful cul-de-sac is a lovely locale for growing families - and offers a brand-new nearby shopping centre expected to open this year!



Disclaimer: All information contained therein is gathered from relevant third parties sources. We cannot guarantee or give any warranty about the information provided. Interested parties must rely solely on their own enquiries.



For Sale
Please Call

View
ljhooker.com.au/B2RUF4R

Contact
Sergio Chen
0434 850 418
sergiochen@ljhpp.com.au

Kevin Ahn
0400 098 188
kevinahn@ljhsbh.com.au

LJ Hooker Property Partners
07 3344 0288

- 210 m to J.M. Sullivan Park
- 1.1 km to bus stop
- 1.3 km to Pallara State School
- 1.6 km to Sweets Road Park
- 2 km to Brookbent Road Park
- 2.1 km to Heathwood eateries
- 2.5 km to upcoming shopping centre (estimated opening 2025)
- 3.9 km to Forest Lake Shopping Centre
- 4.1 km to Forest Lake State High School

An alluring facade, this lovely dark brick lowset enjoys extra privacy behind lush greenery, with a wide driveway leading to the double remote garage offering space for both family cars.

Inside, tall ceilings and ducted heating and cooling throughout welcome you into a life of comfort. The hallway leads past the master bedroom to the first media room at the left - with a ceiling fan above and carpets below for you to enjoy the cosiest movie nights with your loved ones.

The entertaining zone awaits at the rear of the residence, with a dining and family room at each side of the open-plan kitchen.

Luxuriously appointed, this chef's haven offers stone benchtops, a dining bar, and a suite of Westinghouse stainless steel appliances including a suave gas stove! The bright and modern design is perfect for those looking to add their personal style.

Sliding doors from the spacious family room open to the fan-cooled patio, with more LED lighting so you can enjoy al fresco dining all year round. This patio looks out to the easy-care grass yard - fully fenced with Colorbond panelling and perfect for pets and kids to enjoy the fresh summer breeze.

Back inside, your entire family will slumber in complete comfort in each of the four bedrooms, considerably appointed with built-in wardrobes, carpets, ducted climate control, LED lights, and ceiling fans. Parents will enjoy the added benefit of the walk-in robe and adjoining ensuite, while the contemporary family bathroom sits near to the other three bedrooms for ease of access.

With a full-size laundry offering additional storage and side access to the backyard, everything has truly been considered for fuss-free family living.

This one won't last long on the market - contact Team Kevin Ahn today to make your move!

All information contained herein is gathered from sources we consider to be reliable. However, we cannot guarantee or give any warranty about the information provided and interested parties must solely rely on their own enquiries.

Sunday & Summer Property Specialists Pty Ltd with Sunnybank Districts P/L T/A LJ Hooker Property Partners



LJ Hooker Property Partners
07 3344 0288

Disclaimer: All information contained therein is gathered from relevant third parties sources. We cannot guarantee or give any warranty about the information provided. Interested parties must rely solely on their own enquiries.

More About this Property

Property ID	B2RUF4R
Property Type	House
Land Area	444 m2
Including	Air Conditioning Ducted Cooling Ducted Heating Toilets (2) Dishwasher Outdoor Entertaining Built-in-Robes Secure Parking Fully Fenced Remote Garage

Sergio Chen 0434 850 418

Agent with Kevin Ahn | sergiochen@ljhpp.com.au

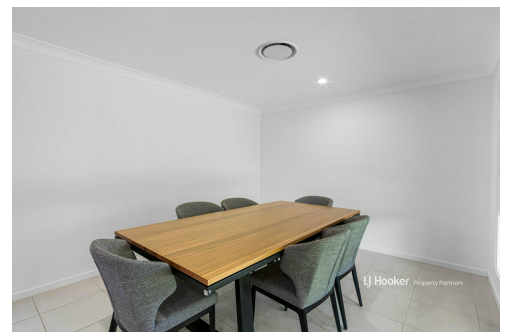
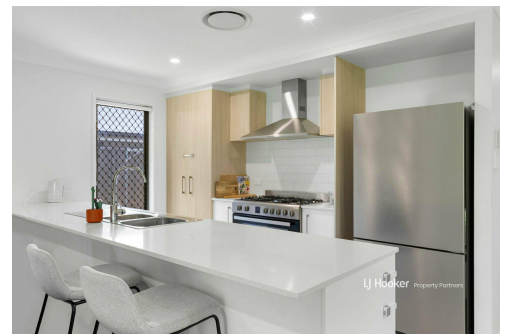
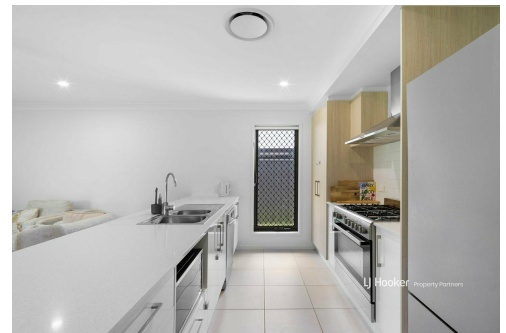
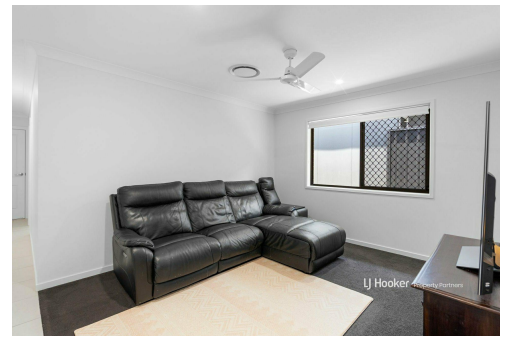
Kevin Ahn 0400 098 188

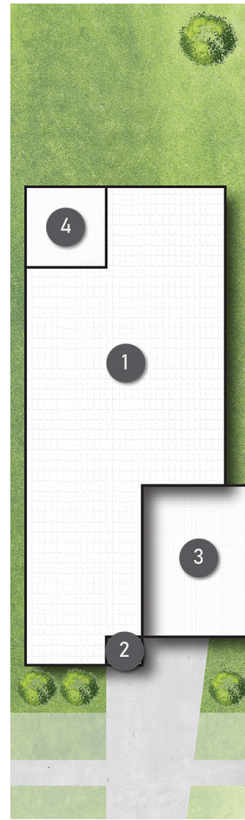
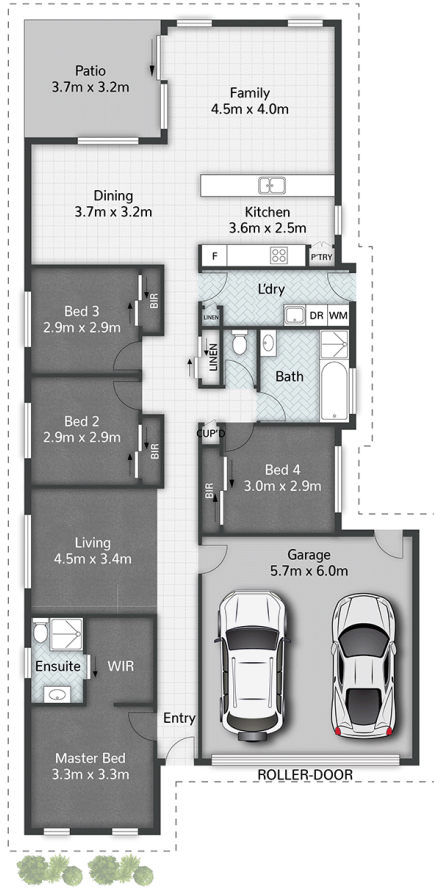
Agent/Independent Contractor | kevinahn@ljhsbh.com.au

LJ Hooker Property Partners 07 3344 0288

25 Pinelands Road, SUNNYBANK HILLS QLD 4109

propertypartners.ljhooker.com.au | sunnybankhills@ljhpp.com.au





LEGEND

- 1 RESIDENCE
- 2 PORCH
- 3 GARAGE
- 4 PATIO

Heseltine Place



10 Heseltine Place **PALLARA**

 4 |
  2 |
  2 |
  204m²

LJ Hooker Property Partners

All dimensions are approximate; they are subject to errors and inaccuracies and no liability will be accepted. Plans are shown for marketing purposes only.

LJ Hooker

LJ Hooker Property Partners
07 3344 0288

Disclaimer: All information contained therein is gathered from relevant third parties sources. We cannot guarantee or give any warranty about the information provided. Interested parties must rely solely on their own enquiries.