

Pakenham, 14 Ripplebrook Walk

Walk to Town Location!

Perfectly positioned within walking distance of Pakenham Train Station (400m approx.), Pakenham Main Street (550m approx.) & easy access to the M1 Freeway is this immaculately presented modern townhouse with the upgrades a purchaser would want.

Features include:

- * Downstairs primary bedroom with walk in robe plus ensuite
- * Bedroom two with built in robes
- * Secondary bathroom
- * Open plan family area with separate dining room
- * Kitchen with oven, cooktop, rangehood and dishwasher
- * Upstairs powder room
- * Split system air-conditioning and gas ducted heating
- * Balcony area



For Sale
Please Call

View
ljhooker.com.au/1PSEFC9

Contact
Jack Anning
0488 558 531
janning.pakenham@ljhooker.com.au



LJ Hooker Pakenham
(03) 5943 8000

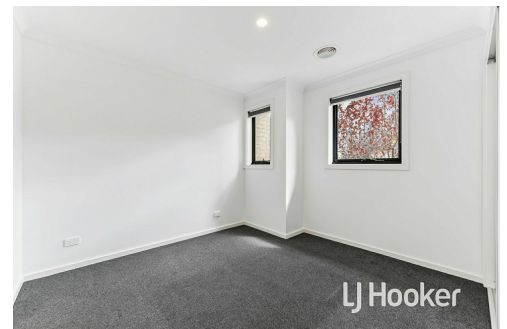
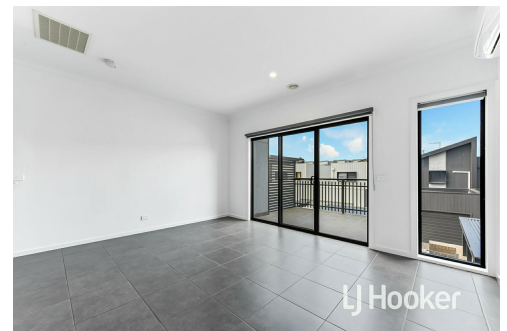
Disclaimer: All information contained therein is gathered from relevant third parties sources. We cannot guarantee or give any warranty about the information provided. Interested parties must rely solely on their own enquiries.

More About this Property

Property ID	1PSEFC9
Property Type	Townhouse
Including	Ensuite Air Conditioning Ducted Heating Balcony Dishwasher Built-in-Robes Secure Parking Fully Fenced

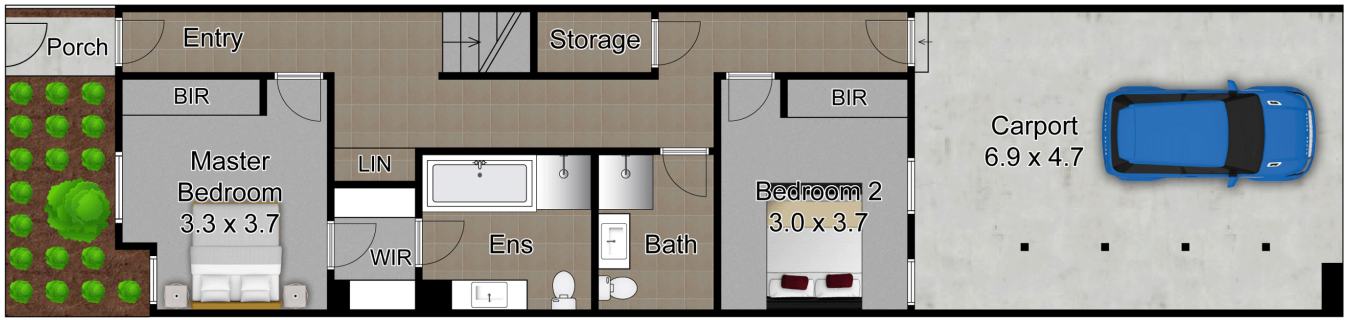
Jack Anning 0488 558 531
Sales Specialist | janning.pakenham@ljhooker.com.au

LJ Hooker Pakenham (03) 5943 8000
45 John Street, PAKENHAM VIC 3810
pakenham.ljhooker.com.au | pakenham@ljhooker.com.au



LJ Hooker Pakenham
(03) 5943 8000

Disclaimer: All information contained therein is gathered from relevant third parties sources. We cannot guarantee or give any warranty about the information provided. Interested parties must rely solely on their own enquiries.



Ground Floor



First Floor



This drawing is for illustrative purposes only and while every effort has been made to maintain accuracy, prospective purchasers should check all information