

1 Dominic Road, Pakenham


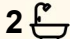
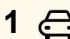
Beautifully Presented, Perfectly Positioned

The Property

Welcome to 1 Dominic Road, Pakenham. Contemporary, low-maintenance and beautifully presented, this inviting residence delivers the perfect balance of comfort and convenience. Offering three generous bedrooms, light-filled open-plan living, a modern kitchen and private outdoor spaces, it presents an outstanding opportunity for first home buyers, downsizers and investors alike. Positioned within the sought-after Caversham Waters Estate, this exceptional location places quality schools, local shopping, Pakenham Train Station, parklands and major road connections all within easy reach, delivering outstanding convenience for everyday living.

The Point of Difference

- Designed for effortless everyday living, the light-filled open-plan living and dining area is filled with natural light, creating an inviting space to relax or entertain.
- The well-appointed kitchen showcases quality stainless-steel appliances, a large island bench, walk-in pantry, generous cupboard space and ample meal preparation space.
- Boasting three well-appointed bedrooms, the upstairs main bedroom features a walk-in robe, ensuite and its own balcony,

3  2  1 

FOR SALE

\$525,000 - \$565,000

VIEW

Sat 11th Jul @ 10:00AM - 10:30AM

AGENTS

Mac Naidoo
0452 516 565
mac.naidoo@ljhooker.com.au

Paul Nuske
0414 717 458
paul.nuske@ljhooker.com.au

AGENCY

LJ Hooker Point Cook
(03) 9975 7080

All information contained therein is gathered from relevant third parties sources. We cannot guarantee or give any warranty about the information provided. Interested parties must rely solely on their own enquiries.



while the two remaining bedrooms are fitted with built-in robes and are serviced by the centrally located main bathroom.

- The patio and low-maintenance courtyard provide an ideal outdoor setting for entertaining or enjoying the fresh air, complete with a garden shed for additional storage.
- Additional highlights include split-system heating and cooling to the living area, wall panel heating to all bedrooms, a European-style laundry, a downstairs powder room, quality tiled flooring, modern neutral interiors and a single remote-control garage with internal access.

The Point of Interest

Perfectly positioned within Caversham Waters Estate, this home enjoys exceptional convenience with quality schools, local shopping, Pakenham Train Station, parklands and walking trails all within easy reach. Families will appreciate the property being zoned for John Henry Primary School and Edenbrook Secondary College, while nearby cafés, recreational facilities and everyday amenities complement the lifestyle on offer. With the Princes Highway and M1 Freeway also easily accessible, you'll enjoy seamless connectivity to Melbourne and surrounding suburbs.

Note. All stated dimensions are approximate only. Particulars given are for general information only and do not constitute any representation on the part of the vendor or agent. Any school zoning stated based on www.findmyschool.vic.gov.au as of 03/07/26.

MORE DETAILS

Property ID	2JTCHGH
Property Type	Townhouse
Land Area	163 m2

Mac Naidoo 0452 516 565

Sales Executive | mac.naidoo@ljhooker.com.au

Paul Nuske 0414 717 458

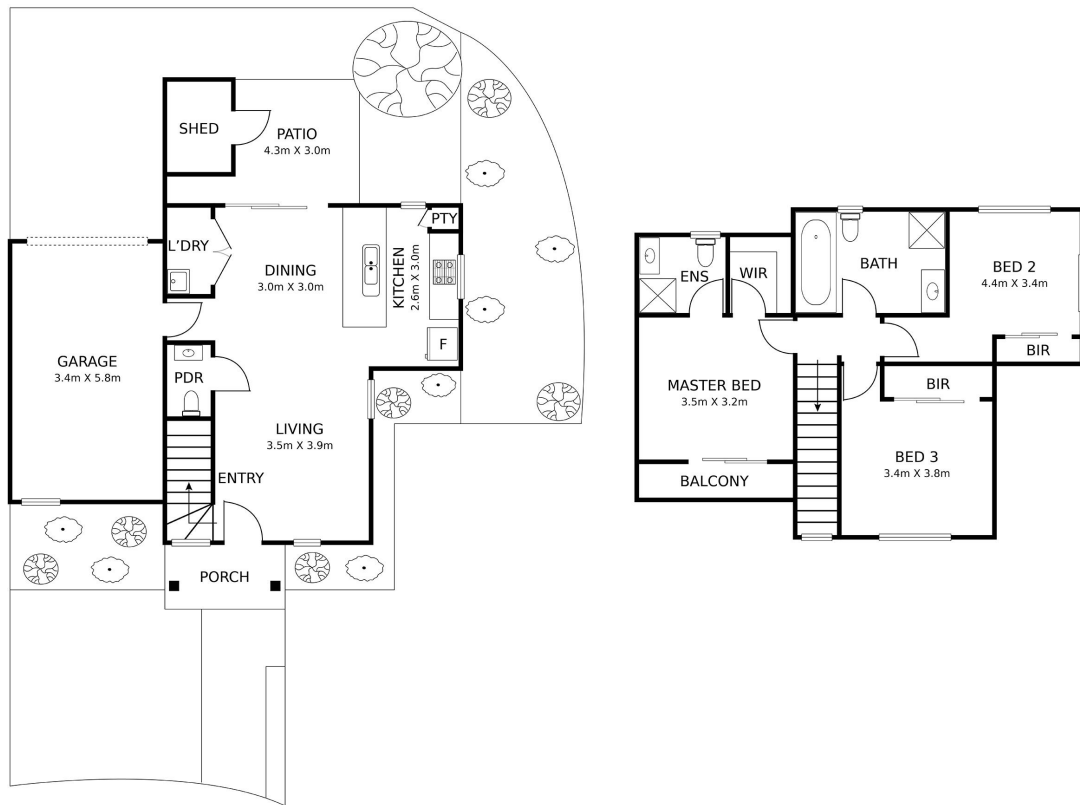
Licensed Estate Agent | paul.nuske@ljhooker.com.au

LJ Hooker Point Cook (03) 9975 7080

Shop 211, 4 Main Street, POINT COOK VIC 3030
pointcook.ljhooker.com.au | pointcook@ljhooker.com.au



1 DOMINIC ROAD, PAKENHAM



FLOOR PLAN ON SITE PLAN

DISCLAIMER: THIS FLOOR PLAN IS A VISUAL GUIDE ONLY AND MAY CONTAIN INACCURACIES IN MEASUREMENTS, LAYOUT, ROOM NAMES OR FEATURES. NO WARRANTY IS GIVEN AS TO ITS ACCURACY. INTERESTED PARTIES MUST CONDUCT THEIR OWN DUE DILIGENCE.



All information contained therein is gathered from relevant third parties sources. We cannot guarantee or give any warranty about the information provided. Interested parties must rely solely on their own enquiries.

