



5 Rachael Court, Pakenham

Northside Court Location & Family Home with Bonus Study/4th Bedroom

Perfectly positioned in a quiet court on the northside of the highway, this well-maintained home offers comfort, space, and functionality for the whole family. Situated on a generous 663m² block, it's ideal for those seeking a peaceful lifestyle with convenience close at hand.

Step inside to find three spacious bedrooms, including a master with walk-in robe and private ensuite, plus a versatile study or potential fourth bedroom. A welcoming lounge sits at the front of the home, while the open-plan hostess kitchen and dining area flow seamlessly for everyday living and entertaining.

Outdoor features are equally impressive, with an elevated, decked entertaining area perfect for year-round enjoyment. The front and rear gardens are beautifully maintained, providing both privacy and street appeal. A double garage with remote control access includes a workshop/storage area and handy rear access to the backyard.

An ideal opportunity for families, first home buyers, or investors looking for a quality property in a sought-after Northside location.

3 2 2

FOR SALE

Please Call

AGENTS

Troy Farrell
0417 244 524

tfarrell.pakenham@ljhooker.com.au

AGENCY

LJ Hooker Pakenham
(03) 5943 8000

All information contained therein is gathered from relevant third parties sources.
We cannot guarantee or give any warranty about the information provided.
Interested parties must rely solely on their own enquiries.

LJ Hooker

MORE DETAILS

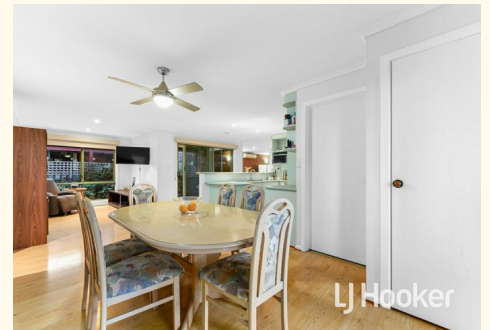
Property ID L4968107
Property Type House
Land Area 663 m2
Including Ensuite
Study
Air Conditioning
Ducted Heating
Deck
Outdoor Entertaining
Built-in-Robes
Secure Parking
Fully Fenced
Remote Garage

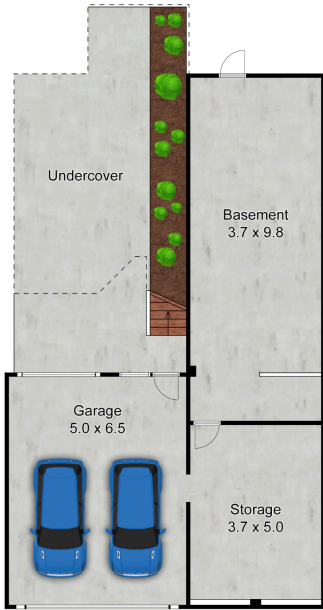
Troy Farrell 0417 244 524

Sales Specialist | Licensed Estate Agent |
tfarrell.pakenham@ljhooker.com.au

LJ Hooker Pakenham (03) 5943 8000

45 John Street, PAKENHAM VIC 3810
pakenham.ljhooker.com.au | pakenham@ljhooker.com.au





Lower Ground Floor



Ground Floor



This drawing is for illustrative purposes only and while every effort has been made to maintain accuracy, prospective purchasers should check all information

