



3 Rundell Way, Pakenham


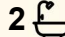
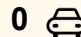
Perfect First Home or Investment Opportunity on 723m²;

Positioned on a generous 723m²; (approx.) allotment, this freshly updated three-bedroom home offers space, comfort and an ultra-convenient location.

The home features three well-sized bedrooms, including a master with full ensuite, complemented by a light-filled lounge room and an open dining and kitchen area ideal for everyday living. Recently refreshed with fresh paint throughout and brand-new carpet.

Step outside to a massive pitched pergola, perfect for year-round entertaining, overlooking the expansive backyard. With double-gate side access, there is ample room to build your own shedding, store a trailer, caravan or boat, or simply enjoy the space.

Ideally located directly opposite Pakenham Consolidated School and within easy walking distance to Pakenham Secondary College, Beaconhills College and the Lakeside Shopping Complex, this is a standout opportunity for first home buyers, investors or families alike. An affordable entry into the market with space, location and future potential—this one is not to be missed!!

3  2  0 

FOR SALE

Please Call

AGENTS

Troy Farrell

0417 244 524

tfarrell.pakenham@ljhooker.com.au

Jaz Lilley

jlilley.pakenham@ljhooker.com.au

AGENCY

LJ Hooker Pakenham

(03) 5943 8000

All information contained therein is gathered from relevant third parties sources. We cannot guarantee or give any warranty about the information provided. Interested parties must rely solely on their own enquiries.



MORE DETAILS

Property ID 1Q9SFC9
Property Type House
Land Area 723 m2
Including Air Conditioning
Ducted Heating
Toilets (2)
Outdoor Entertaining
Built-in-Robes

Troy Farrell 0417 244 524

Sales Specialist | Licensed Estate Agent |
tfarrell.pakenham@ljhooker.com.au

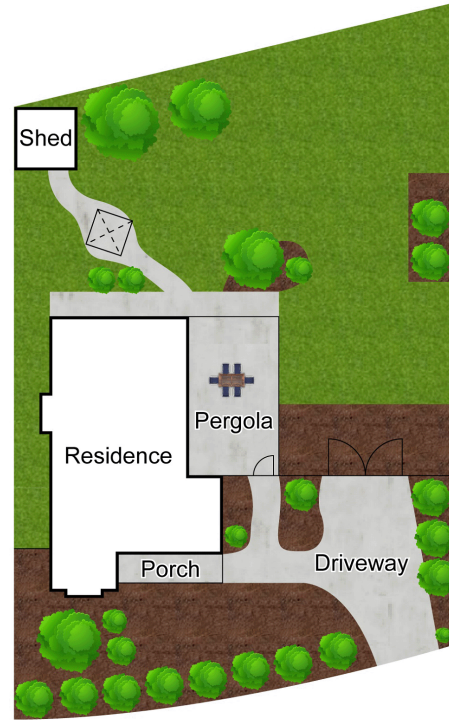
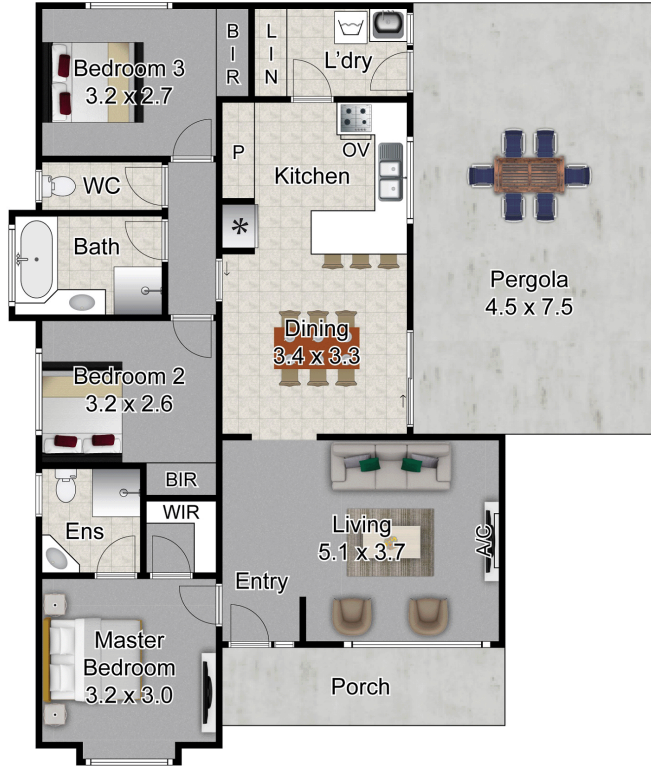
Jaz Lilley

Sales Associate | Jlilley.pakenham@ljhooker.com.au

LJ Hooker Pakenham (03) 5943 8000

45 John Street, PAKENHAM VIC 3810
pakenham.ljhooker.com.au | pakenham@ljhooker.com.au





This drawing is for illustrative purposes only and while every effort has been made to maintain accuracy, prospective purchasers should check all information