



8 Bastille Close, Padstow Heights

Luxury Living in a Tranquil Setting

Experience the pinnacle of modern living in this architecturally designed masterpiece, set in the serene surroundings of Padstow Heights. Boasting luxurious finishes throughout, this family entertainer seamlessly blends style and functionality. The open-plan lounge and dining area flow effortlessly to the sun-drenched backyard, creating a perfect space for both relaxation and entertainment. Designed for those who appreciate sophistication, this home offers a lifestyle of elegance and convenience.

At the heart of the home lies the stunning gourmet kitchen, fitted with premium appliances, a mirrored splash-back, an expansive island bench with gas cooking. Multiple entertaining areas in the low maintenance rear yard, featuring a built-in BBQ and kitchenette for alfresco dining. Four generously sized bedrooms, with the master suite boasting a spacious robe and a private ensuite. The main bathroom exudes luxury with floor-to-ceiling tiles, a sleek vanity and a separate bathtub.

Additional premium inclusions including an alarm system, keyless entry, zoned ducted air conditioning, security cameras, stylish tiled flooring downstairs and timber flooring upstairs complete this stunning

4 3 2

FOR SALE
SOLD | \$1,415,000

AGENTS

Lush Pillay
0407 121 573
lush.pillay@ljhooker.com.au

James Trivor
0422 696 125
james.trivor@ljhooker.com.au

AGENCY

LJ Hooker Padstow
(02) 9771 1177

All information contained therein is gathered from relevant third parties sources. We cannot guarantee or give any warranty about the information provided. Interested parties must rely solely on their own enquiries.

LJ Hooker

home. Nestled in the tranquil surrounds of Padstow Heights, this exceptional residence is moments from the Georges River, local parks/walking tracks, and scenic nature reserves. It also enjoys proximity to quality schools, shops and a 6 minute drive to both Padstow & Riverwood station.

Key Features:

- Luxury family entertainer with seamless indoor-outdoor flow
- Open lounge and dining area extending to an alfresco backyard
- Designer kitchen with premium appliances, mirrored splashback & gas cooking
- Multiple entertaining spaces with built-in outdoor BBQ/kitchenette
- Four generous bedrooms, master w/ large robe, ensuite & scenic Georges River views
- Spacious main bathroom with floor-to-ceiling tiles and separate bathtub
- Alarm system, keyless entry, zoned ducted air-conditioning, security cameras
- 6 Minute drive to both Padstow & Riverwood stations & amenities

Disclaimer: All information contained herein is gathered from sources we believe reliable. We have no reason to doubt its accuracy, however we cannot guarantee it. All interested parties should make and rely upon their own enquiries.

MORE DETAILS

Property ID	11UDFAE
Property Type	DuplexSemi-detached
Land Area	289.2 m2

Lush Pillay 0407 121 573

Principal & Director | lush.pillay@ljhooker.com.au

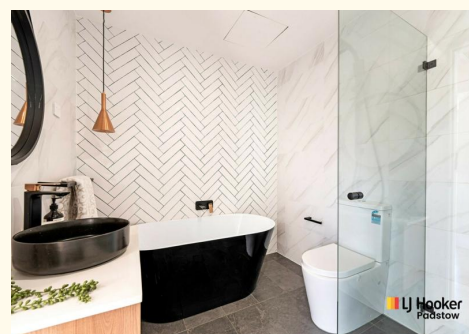
James Trivor 0422 696 125

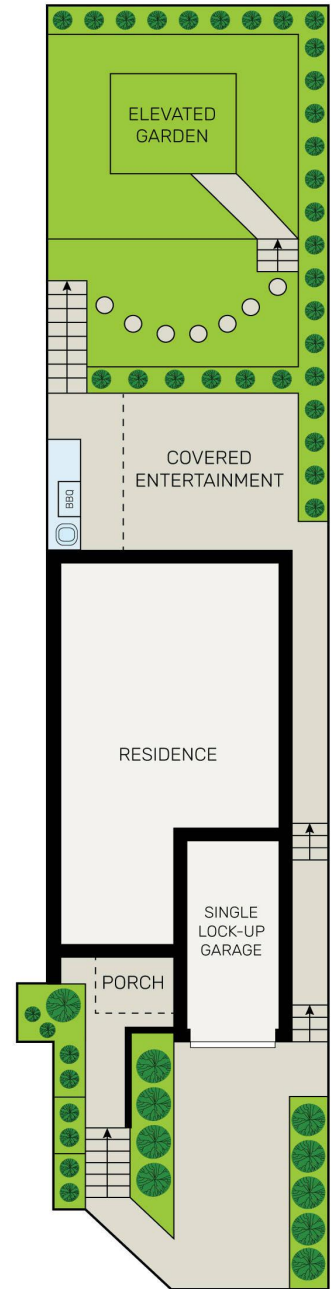
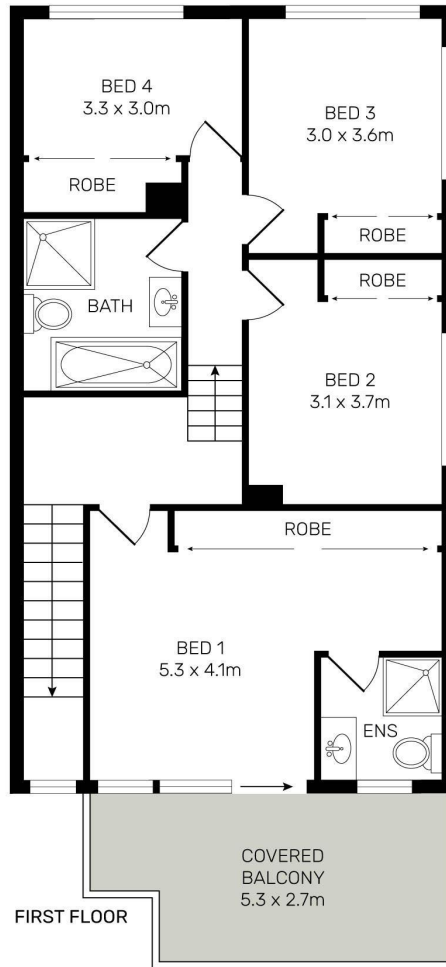
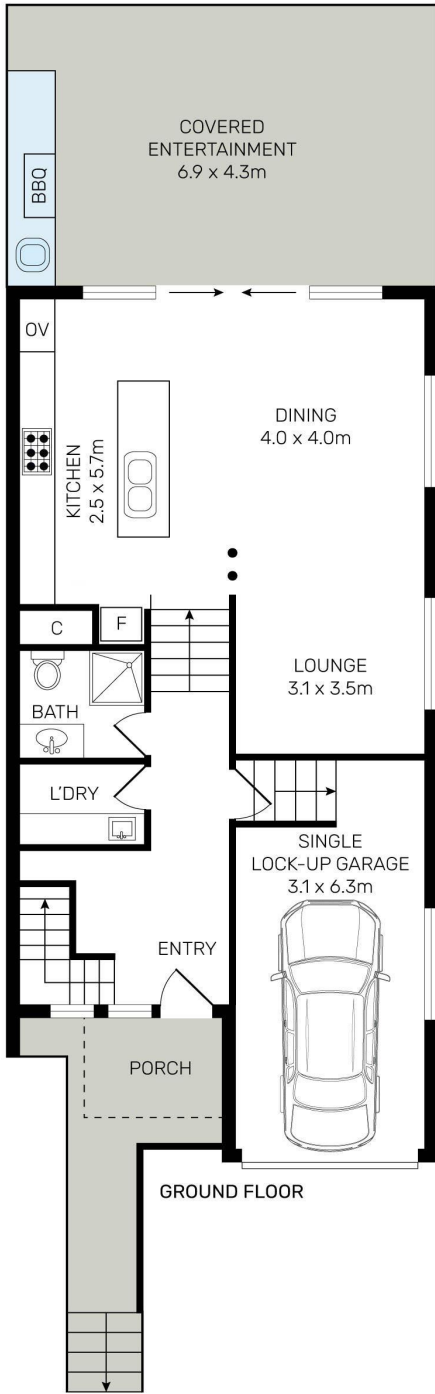
Sales Agent | james.trivor@ljhooker.com.au

LJ Hooker Padstow (02) 9771 1177

2 Padstow Parade, PADSTOW NSW 2211

padstow.ljhooker.com.au | reception.padstow@ljhooker.com.au





8 Bastille Close, Padstow Heights

All information contained herein is gathered from all sources we believe to be reliable. However we cannot guarantee its accuracy and interested parties should rely on their own enquiries.

(02) 9771 1177

All information contained therein is gathered from relevant third parties sources. We cannot guarantee or give any warranty about the information provided. Interested parties must rely solely on their own enquiries.

