



## Paddington, 318 South Dowling Street

### Renovated Two-storey Terrace Within A Prized Location

This stylishly renovated two storey terrace offers the perfect balance of Victorian elegance and contemporary flair.

Tastefully appointed and ideal for family living, it features two separate living zones and opens out to a sunlit garden.

Located in the leafy section of South Dowling Street and nestled between Moore Park and Oxford Street.

This charming terrace comprises of 4 bedrooms, main living room with separate dining room which flows to both kitchen and courtyard.

Property Features:

4 2 0

**For Sale**  
Sold

**View**  
[ljhooker.com.au/1UCHYY](http://ljhooker.com.au/1UCHYY)

**Contact**  
**Aaron Del Monte**  
0447 144 434  
[aaron.delmonte@ljhdoulebey.com](mailto:aaron.delmonte@ljhdoulebey.com)

**Mark Matthews**  
0403 731 248  
[mark.matthews@ljhdoulebey.com](mailto:mark.matthews@ljhdoulebey.com)

# LJ Hooker

**Disclaimer:** All information contained therein is gathered from relevant third parties sources. We cannot guarantee or give any warranty about the information provided. Interested parties must rely solely on their own enquiries.

**LJ Hooker Double Bay**  
(02) 9185 2816

- New modern kitchen
- separate lounge and dining area
- Four bedrooms with new carpet
- Two bathrooms
- Internal laundry
- Courtyard

Perfectly placed to enjoy a cosmopolitan village lifestyle, it's a short stroll to Oxford Street, Local cafe's and beautiful parkland.

## More About this Property

Property ID	1UCHYY
Property Type	House
Land Area	113 m <sup>2</sup>

### Aaron Del Monte 0447 144 434

Managing Director | aaron.delmonte@ljhdoublingbay.com

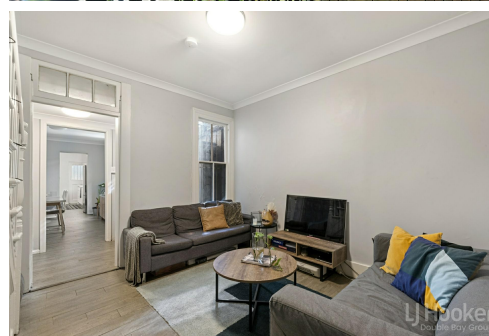
### Mark Matthews 0403 731 248

Senior Property Partner | mark.matthews@ljhdoublingbay.com

### LJ Hooker Double Bay (02) 9185 2816

38 Ocean Street, WOOLLAHRA NSW 2025

doublebay.ljhooker.com.au | admin@ljhdoublingbay.com



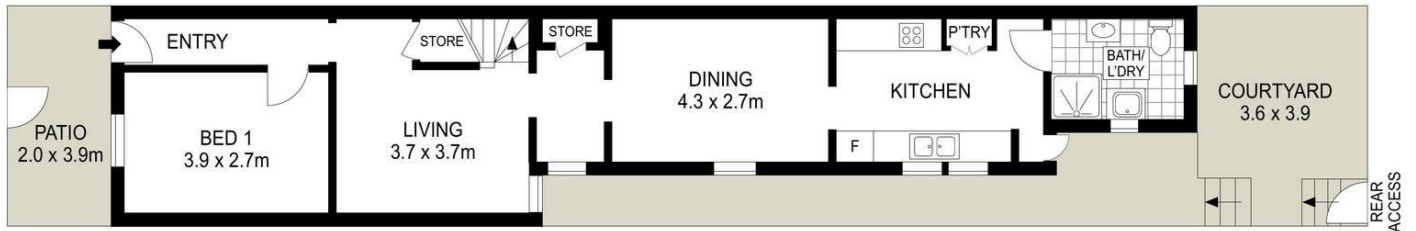
# LJ Hooker

**Disclaimer:** All information contained therein is gathered from relevant third parties sources. We cannot guarantee or give any warranty about the information provided. Interested parties must rely solely on their own enquiries.

**LJ Hooker Double Bay**  
**(02) 9185 2816**



FIRST FLOOR



GROUND FLOOR



Scale in metres. Indicative only. Dimensions are approximate. All information contained herein is gathered from sources we believe to be reliable however we cannot guarantee is accuracy and interested persons should rely on their own enquiries.