



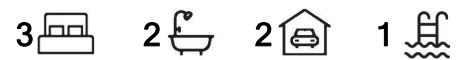
Pacific Pines, 6 Zenith Crescent

Extraordinary home, amazing views on a large prestigious block of 1170m², ready to live in NOW!

Get ready to fall in love with this magnificent home, perfectly perched on a sprawling 1170m² flat block that offers stunning coastal and city views! Situated on one of the highest points in Pacific Pines, this residence is bursting with curb appeal and is ready to welcome you home. Step inside and be wowed by the spacious, modern design that shines with impeccable presentation.

The Master Suite is a true highlight, featuring a huge ensuite bathroom with double vanities, and a walk-in robe-your personal retreat! Enjoy seamless access to the garden through sliding doors, where breath-taking views await.

This home boasts additional bedrooms complete with built-in robes and ceiling fans, making it perfect for family or guests. The versatile rumpus room positioned between the bedrooms offers endless possibilities for fun and relaxation or potential 4th bedroom.



For Sale
Offers Over \$1,600,000

View
ljhooker.com.au/35AEGMK

Contact
Tim Wolff
0419 620 470
twolff@ljhteam.com.au
Tracey Fisher
0401 882 881

LJ Hooker

Disclaimer: All information contained therein is gathered from relevant third parties sources. We cannot guarantee or give any warranty about the information provided. Interested parties must rely solely on their own enquiries.

LJ Hooker Pacific Pines | Helensvale
(07) 5573 2099

The open-plan dining area provides picturesque views of the inviting in-ground pool, making every meal feel like a special occasion. The generously sized kitchen and living room feature expansive benchtops, high-quality fixtures, and plenty of cupboard space for all your culinary adventures.

But that's not all! This home also includes a laundry, powder room, and family bathroom for your convenience. Wide hallways lead you to an enclosed entertaining area that's perfect for hosting gatherings or simply enjoying the outdoors.

With two-car secure garaging, an inviting pergola area, and a shed for additional storage, this home truly has it all. Ducted air conditioning ensures comfort year-round, so you can enjoy every moment.

Master Suite, huge en-suite bathroom, WIR, bath, double vanities, with WC

Access to the garden via sliding doors and amazing views

2 Further bedrooms, BIR, fans, tiled floors

A large rumpus room in between the 2 bedrooms, very versatile

Open plan Dining area with views to the heated pool

Very spacious kitchen and living room with quality fixtures, dishwasher, plenty of cupboards and storage, Gas cooking

laundry, powder room and family bathroom

Wide open hallways enclosed entertaining area

2 car secure garage with drive through access

Inground Pool with glass balustrade

Pergola area and shed

Ducted air conditioning throughout

Solar PV System

Land Size 1170m²

Built 2005

This home is only a short 3-5minute drive to the M1. Local schools and shops are only minutes away, being Coles, Woolworths, and Helensvale Westfield for retail shopping. In Helensvale you will also find the train station, making commuting to Brisbane an absolute breeze and the light rail, connecting the northern end of the Gold Coast to Southport, Surfers Paradise, and Broadbeach via quick and easy public transport. This quality home won't last long so call Tim Wolff or Tracey Fisher your local real estate agents, or we will see you at the open homes.

Disclaimer:

All information contained is gathered from relevant third party sources. We cannot guarantee or give any warranty about the information provided. Interested parties must rely solely on their own enquiries.

More About this Property

Property ID	35AEGMK
Property Type	House
Land Area	1170 m ²
Including	Ensuite Study Ducted Cooling Pool Dishwasher Built-in-Robes Remote Garage

Tim Wolff 0419 620 470

Sales Specialist | twolff@ljhteam.com.au

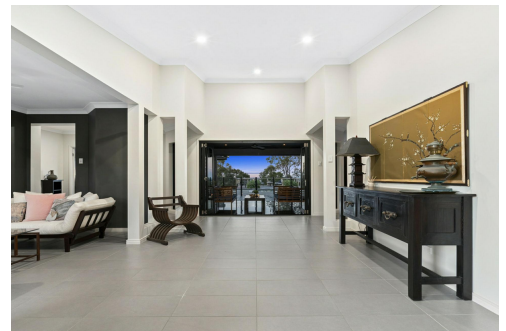
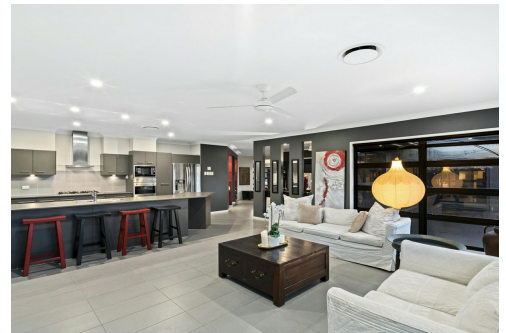
Tracey Fisher 0401 882 881

Sales Specialist

LJ Hooker Pacific Pines | Helensvale (07) 5573 2099

8 Discovery Drive, HELENSVALE QLD 4212

pacificpines-helensvale.ljhooker.com.au | admin@ljhteam.com.au

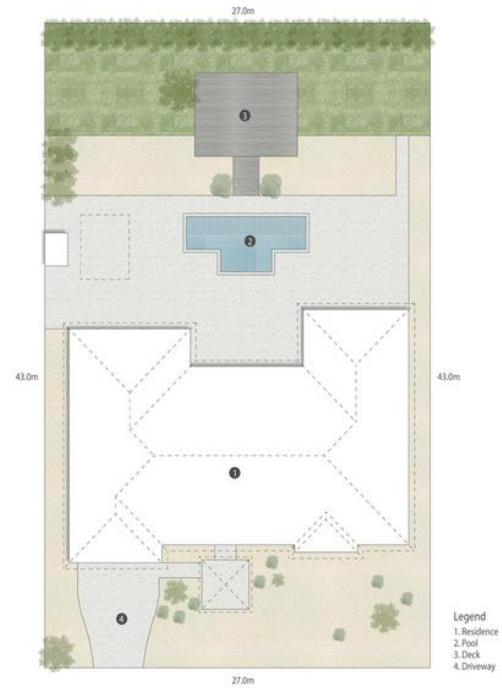


LJ Hooker

Disclaimer: All information contained therein is gathered from relevant third parties sources.

We cannot guarantee or give any warranty about the information provided. Interested parties must rely solely on their own enquiries.

**LJ Hooker Pacific Pines | Helensvale
(07) 5573 2099**



6 ZENITH CRESCENT, PACIFIC PINES

3 2 2

Internal: 253m² | External: 61m² | Total: 314m²

Whilst every attempt has been made to ensure the accuracy of the floor plan contained here, measurements of doors, windows, rooms and any other item are approximate and no responsibility is taken for any error, omission, or misstatement. This plan is for illustrative purposes only and should only be used as such by any prospective purchaser.

