

Pacific Pines, 6 Fanning Court

FANTASTIC, SPACIOUS FAMILY HOME IN CENTRAL & CONVENIENT QUIET CUL-DE-SAC LOCATION!

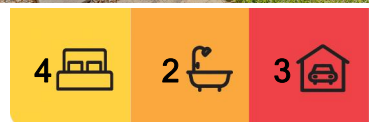
Nestled in an incredible location in the highly sought-after Pacific Pines, is this perfect family home that is priced to sell ... This easy living one-level abode is an ideal home for first-home buyers, large families, professional couples, investors or retirees in search of a very spacious, easy-care, low-maintenance home that offers plenty of privacy and is assured of capital-growth for years to come!

Key features of this property include:

- *Big family home offering two totally separate open-plan living & dining areas plus an extra media/rumpus room
- *Updated LED lighting, ceiling fans throughout plus two brand-new air-conditioning units
- *Stunning modern floorboards throughout
- *Over-sized kitchen features large bench/breakfast bar, stylish slash-back, double-sink, plumbed fridge space & ample cupboard space



Disclaimer: All information contained therein is gathered from relevant third parties sources. We cannot guarantee or give any warranty about the information provided. Interested parties must rely solely on their own enquiries.



For Sale
\$1,000,000+

View
ljhooker.com.au/JTJ0F

Contact
Julian Kannis
041 363 5551
julian.kannis@ljhooker.com.au

LJ Hooker Ashmore
(07) 5526 9722

- *Spacious master bedroom featuring walk-in robe & ensuite
- *Three separate additional bedrooms both with built-in robes & ceiling fans
- *Good sized laundry with plenty of storage space & direct access outside
- *Central main bathroom with bathtub & separate toilet
- *Courtyard spaces with veggie garden that flow from living & dining areas
- *Fully fenced secure easy-care front, side and rear yard spaces for the pets & kids to play safely
- *Incredible elevated cul-de-sac location with no thru-traffic, a real "family-feel" street & neighbourhood
- *Perfectly located only metres to Pinnacle Pines Shopping Centre, Pacific Pines Town Centre, Pacific Pines Central Park, Pacific Pines High School plus easy access to public transport & a stone's throw to the M1
- *Secure double lock-up garage with internal house access & rear double door access, that could easily be converted for boat or Jetski storage
- *Additional off-street driveway parking
- *Money saving 6.6kW solar panel system
- *Built-in security camera system will stay with the home

Call your local area specialist Julian Kannis to view this outstanding opportunity anytime by appointment, otherwise we look forward to seeing you at one of our scheduled open homes.

Video tour of the home is available on request

Disclaimer: Whilst every effort has been made to ensure the accuracy of these particulars, no warranty is given by the vendor or the agent as to their accuracy. Interested parties should not rely on these particulars as representations of fact but must instead satisfy themselves by inspection or otherwise.

More About this Property

Property ID	JTJ0F
Property Type	House
Land Area	528 m2
Including	Ensuite Air Conditioning Toilets (2) Courtyard Dishwasher Outdoor Entertaining Floorboards Built-in-Robes Fully Fenced Remote Garage Carpeted Close to Schools Close to Shops Close to Transport

Julian Kannis 041 363 5551

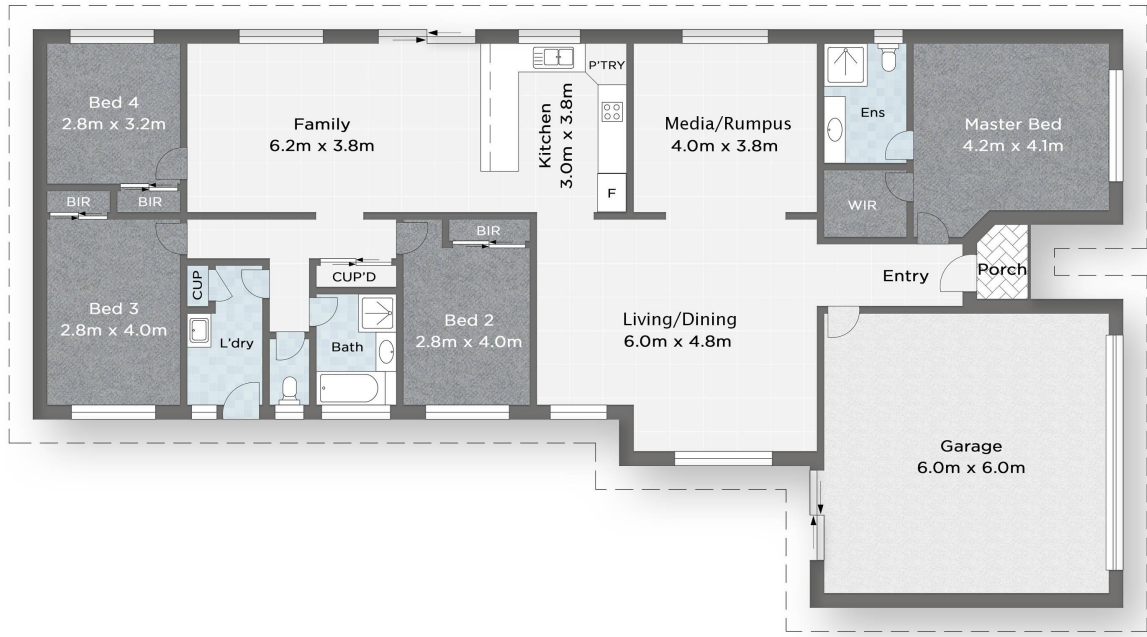
Sales Professional | julian.kannis@ljhooker.com.au

LJ Hooker Ashmore (07) 5526 9722

167 Cotlew Street, ASHMORE QLD 4214

ashmore.ljhooker.com.au | admin.ashmore@ljhooker.com.au





6 FANNING COURT, PACIFIC PINES

Bed 4
 Bath 2
 Car 2

Julian Kannis 0413 635 551

Ashmore

Measurements are approximate only and no responsibility is taken for any error, omission, or mis-statement. This is for illustrative purposes only and should be used as such by any prospective purchaser. www.visualmotion.com.au

LJ Hooker Ashmore
(07) 5526 9722

Disclaimer: All information contained therein is gathered from relevant third parties sources.
 We cannot guarantee or give any warranty about the information provided. Interested parties must rely solely on their own enquiries.